

WAAS CH <b>78140</b> <b>W06A</b>	APP CRS <b>060°</b>	Rwy Ldg TDZE Apt Elev	<b>4677</b> <b>7</b> <b>9</b>
--	------------------------	-----------------------------	-------------------------------------

# RNAV (GPS) RWY 6

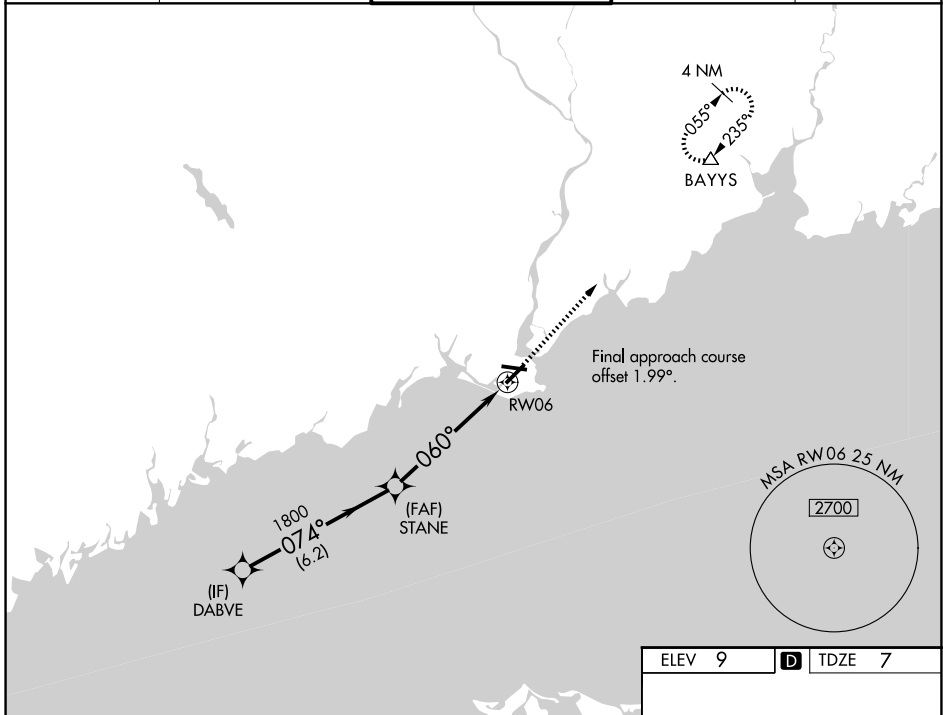
BRIDGEPORT/SIKORSKY (BDR)

RNP APCH - GPS.

**▼** For uncompensated Baro-VNAV systems, LNAV/VNAV NA below -14°C or above 54°C.  
**▲** Circling to Rwy 11, 29 NA at night. Rwy 6 helicopter visibility reduction below 3/4 SM NA.

**MISSED APPROACH:** Climb to 500, then climb to 2700 direct BAYYS and hold, continue climb-in-hold 2700.

ATIS <b>119.15</b>	NEW YORK APP CON <b>124.075 343.65</b>	BRIDGEPORT TOWER* <b>120.9 0 (CTAF) 257.8</b>	GND CON <b>121.75 257.8</b>	UNICOM <b>123.0</b>
-----------------------	---	--	--------------------------------	------------------------



NE-1, 14 MAY 2026 to 11 JUN 2026

NE-1, 14 MAY 2026 to 11 JUN 2026

ELEV 9	<b>D</b> TDZE 7
--------	-----------------



GP 3.00° TCH 51	6.2 NM	4.5 NM	1 NM
--------------------	--------	--------	------

CATEGORY	A	B	C	D
LPV DA		257-1	250 (300-1)	
LNAV/VNAV DA		284-1	277 (300-1)	
LNAV MDA		380-1	373 (400-1)	
CIRCLING	480-1 471 (500-1)	620-1 611 (700-1)	820-2½ 811 (900-2½)	820-2¾ 811 (900-2¾)

