

WAAS CH <b>45514</b> <b>W22A</b>	APP CRS <b>222°</b>	Rwy Ldg TDZE Apt Elev	<b>7734</b> <b>539</b> <b>544</b>
--	------------------------	-----------------------------	---

# RNAV (GPS) RWY 22

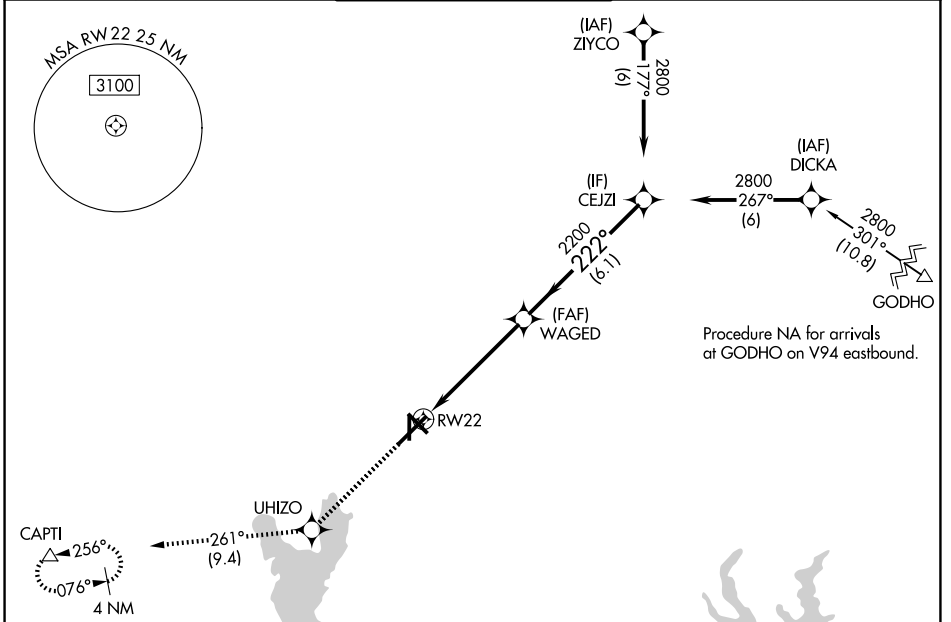
TYLER POUNDS RGNL (TYR)

RNP APCH.

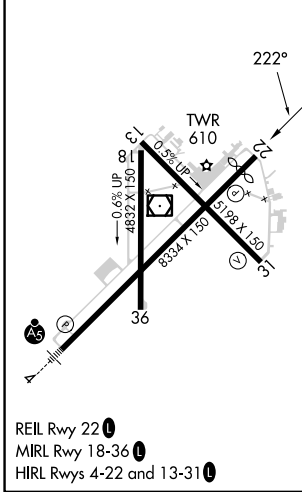
**▼** For uncompensated Baro-VNAV systems, LNAV/VNAV NA below -5°C or above 54°C.

**▲** MISSED APPROACH: Climb to 2500 direct UHIZO and on track 261° to CAPTI and hold.

ATIS <b>126.25</b>	LONGVIEW APP CON★ <b>128.75 379.15</b>	POUNDS TOWER★ <b>120.1 (CTAF) 257.8</b>	GND CON <b>121.9</b>	UNICOM <b>122.95</b>
-----------------------	---	--	-------------------------	-------------------------



ELEV 544	<b>D</b>	TDZE 539
----------	----------	----------



2500	UHIZO	tr 261°	CAPTI
*LNAV only.			
RWY 22		WAGED	CEJZI
1.4 NM		3.7 NM	6.1 NM
GP 3.00°	TCH 54		
CATEGORY	A	B	C
LPV DA	739-3/4		200 (200-3/4)
LNAV/VNAV DA	807-7/8		268 (300-7/8)
LNAV MDA	1040-1	501 (500-1)	1040-1 3/8 501 (500-1 3/8)
CIRCLING	1040-1	496 (500-1)	1160-1 3/4 616 (700-1 3/4) 1280-2 1/4 736 (800-2 1/4)

SC-2, 14 MAY 2026 to 11 JUN 2026

SC-2, 14 MAY 2026 to 11 JUN 2026