

WAAS CH 40014 W04A	APP CRS 042°	Rwy Ldg TDZE 542 Apt Elev 544	7734
--	------------------------	---	-------------

RNAV (GPS) RWY 4

TYLER POUNDS RGNL (TYR)

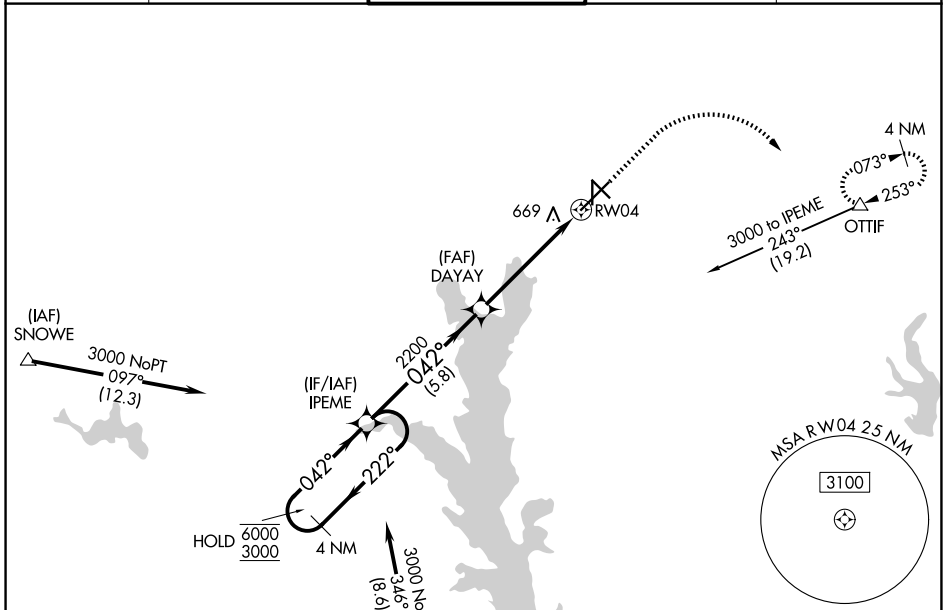
RNP APCH - GPS.

⚠ For uncompensated Baro-VNAV systems, LNAV/VNAV NA below -7°C or above 54°C. For inop ALS, increase LNAV/VNAV all Cats visibility to 1 1/8 SM, LNAV all Cats visibility to 1 SM.

MALSRL

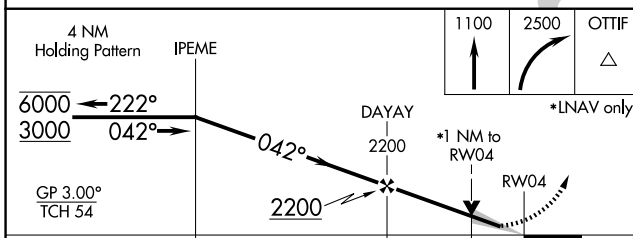
MISSED APPROACH: Climb to 1100 then climbing right turn to 2500 direct OTTIF and hold.

ATIS 126.25	LONGVIEW APP CON ★ 128.75 379.15	POUNDS TOWER ★ 120.1 (CTAF) 0 257.8	GND CON 121.9	UNICOM 122.95
-----------------------	--	---	-------------------------	-------------------------

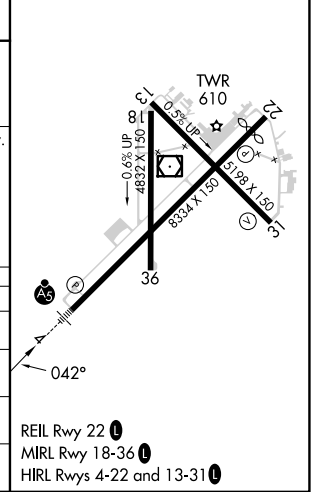


Procedure NA for arrival on FZT VOR/DME airway radials 275 CW 004.

ELEV 544	D TDZE 542
----------	-------------------



CATEGORY	A	B	C	D
LPV DA		742-1/2	200 (200-1/2)	
LNAV/VNAV DA		943-3/4	401 (400-3/4)	
LNAV MDA	920-1/2	378 (400-1/2)	920-5/8	378 (400-5/8)
CIRCLING	980-1 436 (500-1)	1020-1 476 (500-1)	1160-1 3/4 616 (700-1 3/4)	1280-2 1/4 736 (800-2 1/4)



REIL Rwy 22 **0**
MIRL Rwy 18-36 **0**
HIRL Rwy 4-22 and 13-31 **0**

SC-2, 14 MAY 2026 to 11 JUN 2026

SC-2, 14 MAY 2026 to 11 JUN 2026