

NORTH BAY VISUAL RWY 18

AL-625 (FAA)

ST PETE-CLEARWATER INTL (PIE)
ST PETERSBURG-CLEARWATER, FLORIDA

ATIS
 134.5
 TAMPA APP CON
 125.3 316.05
 ST PETERSBURG-CLEARWATER TOWER ★
 118.3 (CTAF) 257.8
 GND CON
 121.9 348.6
 CLNC DEL
 120.6 350.2
 UNICOM
 122.95

LAKE TARPON

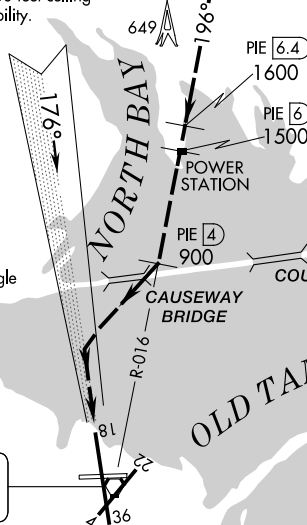
RADAR REQUIRED

PROCEDURE NOT AUTHORIZED AT NIGHT
 NOT AUTHORIZED WHEN TOWER NOT IN OPERATION

Weather Minimums: 2100 feet ceiling
 and 3 miles visibility.

GULF OF AMERICA

Vertical Guidance Navaid and Angle
 I-PIE 3.00°
 PAPI Rwy 18 3.00°



ST PETERSBURG
 116.4 PIE --- · · ·
 Chan 111

LOCALIZER 109.1
 I-PIE --- · · ·
 Chan 28



| | | | | | | | | | | | | | | | |
|-----|---|---|---|---|---|---|---|---|----|----|----|----|----|----|----|
| 1NM | 2 | 3 | 4 | 5 | 6 | 7 | 8 | 9 | 10 | 11 | 12 | 13 | 14 | 15 | 16 |
|-----|---|---|---|---|---|---|---|---|----|----|----|----|----|----|----|



NORTH BAY VISUAL APPROACH

When cleared for a NORTH BAY VISUAL APPROACH, aircraft will proceed visually from over the power station (PIE R-016, 6 DME) heading 196° direct to the Causeway Bridge, then right turn to intercept the final approach course to Rwy 18.

NORTH BAY VISUAL RWY 18

Amdt 6 29MAR18

27°55'N-82°41'W

ST PETERSBURG-CLEARWATER, FLORIDA
ST PETE-CLEARWATER INTL (PIE)

SE-3, 14 MAY 2026 to 11 JUN 2026

SE-3, 14 MAY 2026 to 11 JUN 2026