

VORTAC PIE 116.4	APP CRS 008°	Rwy Ldg TDZE Apt Elev	8720 10 11
Chan 111			

VOR RWY 36

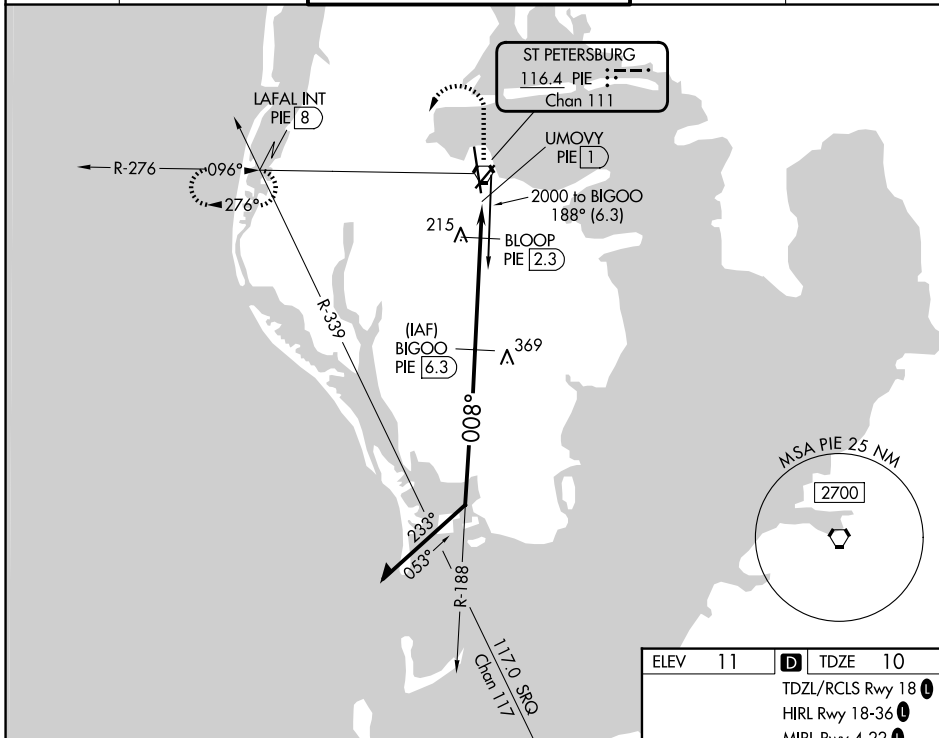
ST PETE-CLEARWATER INTL (PIE)

DME required.

⚠ Circling Rwy 22 NA at night. Rwy 36 helicopter visibility reduction below RVR 5000 NA.

MISSED APPROACH: Climb to 1200 then climbing left turn to 1700 on heading 240° and PIE VORTAC R-276 to LAFAL INT/PIE 8 DME and hold.

ATIS 134.5	TAMPA APP CON 125.3 316.05	ST PETERSBURG-CLEARWATER TOWER * 118.3 (CTAF) 0 257.8	GND CON 121.9 348.6	UNICOM 122.95
----------------------	--------------------------------------	---	-------------------------------	-------------------------



SE-3, 14 MAY 2026 to 11 JUN 2026

SE-3, 14 MAY 2026 to 11 JUN 2026

