

VORTAC PIE 116.4 Chan 111	APP CRS 039°	Rwy Ldg TDZE 11 Apt Elev 11
---	------------------------	---

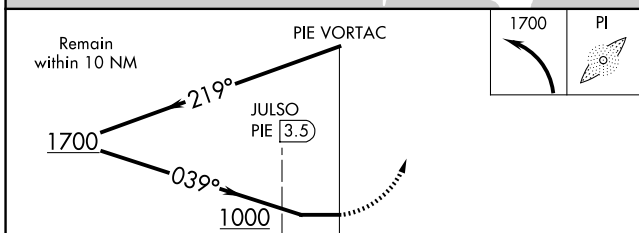
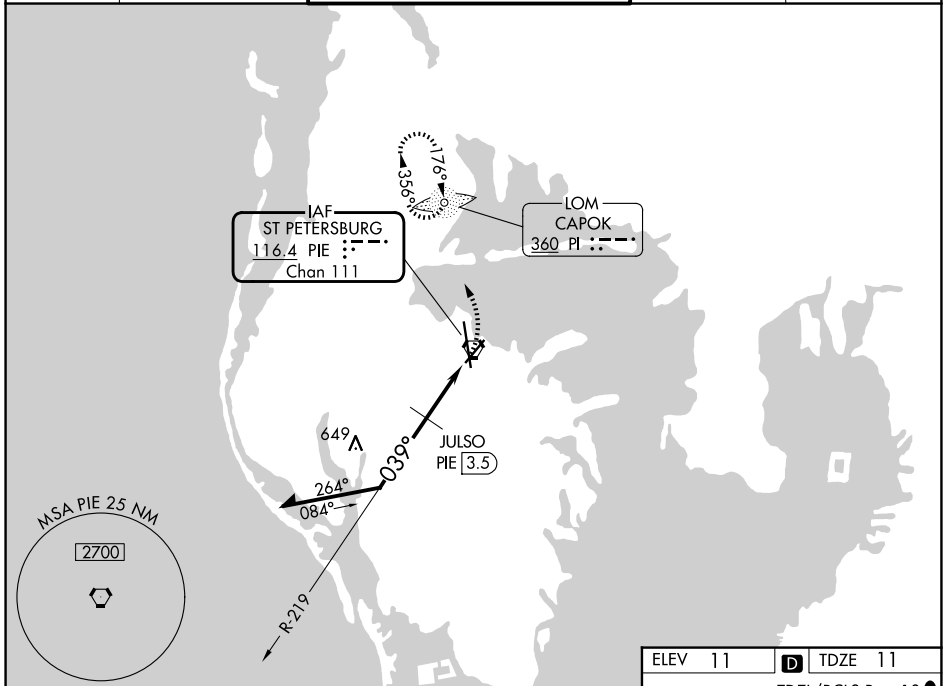
VOR RWY 4
ST PETE-CLEARWATER INTL (PIE)

ADF required.

When local altimeter setting not received, use Tampa Intl altimeter setting and increase all MDAs 40 feet; JULSO fix minimums: increase Circling Cat C/D visibility ¼ SM. Helicopter visibility reduction below ¾ SM NA.

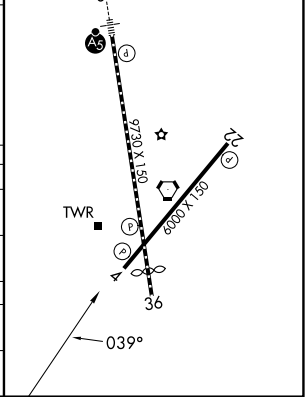
MISSED APPROACH:
Climbing left turn to 1700 direct CAPOK LOM and hold.

ATIS 134.5	TAMPA APP CON 125.3 316.05	ST PETERSBURG-CLEARWATER TOWER * 118.3 (CTAF) 257.8	GND CON 121.9 348.6	UNICOM 122.95
----------------------	--------------------------------------	---	-------------------------------	-------------------------



ELEV 11	D TDZE 11
---------	-----------

TDZL/RCLS Rwy 18
HIRL Rwy 18-36
MIRL Rwy 4-22
REIL Rws 4 and 22



CATEGORY	A	B	C	D
S-4	1000-1¼ 989 (1000-1¼)	1000-1½ 989 (1000-1½)	1000-3	989 (1000-3)
CIRCLING	1000-1¼ 989 (1000-1¼)	1000-1½ 989 (1000-1½)	1000-3	989 (1000-3)
JULSO FIX MINIMUMS				
S-4	480-1	469 (500-1)	480-1¾	469 (500-1¾)
CIRCLING	520-1	509 (600-1)	600-1½ 589 (600-1½)	620-2 609 (700-2)

SE-3, 14 MAY 2026 to 11 JUN 2026

SE-3, 14 MAY 2026 to 11 JUN 2026