

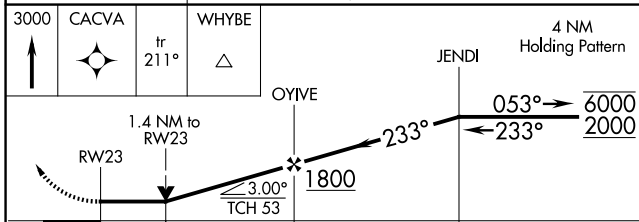
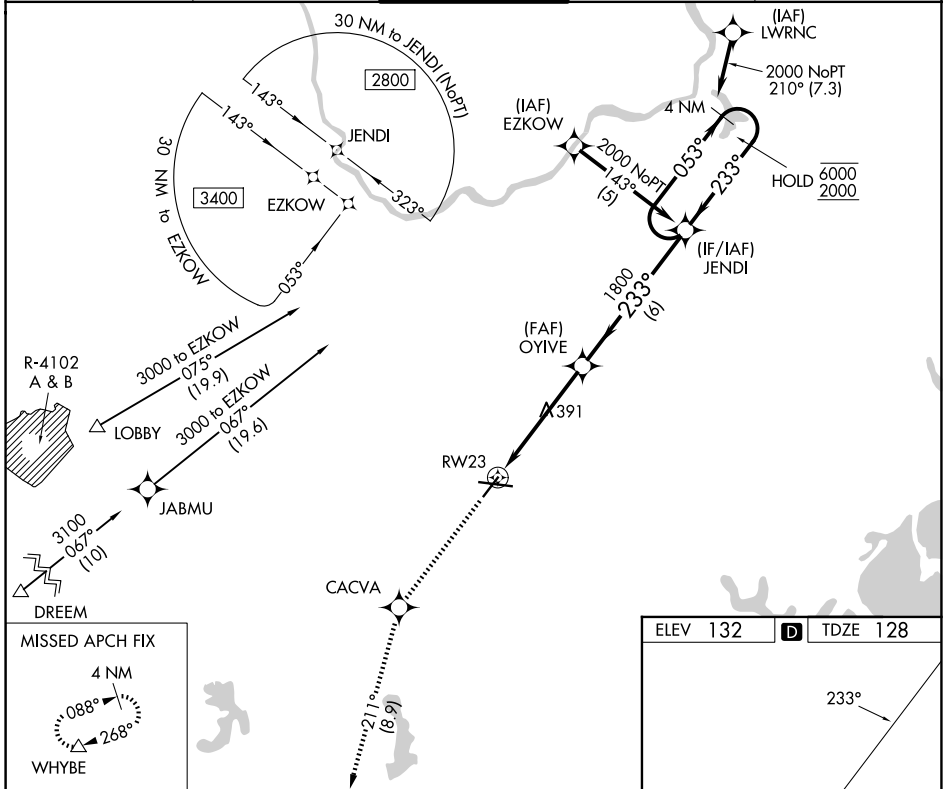
APP CRS	Rwy Ldg	<b>5107</b>
<b>233°</b>	TDZE	<b>128</b>
	Apt Elev	<b>132</b>

# RNAV (GPS) RWY 23

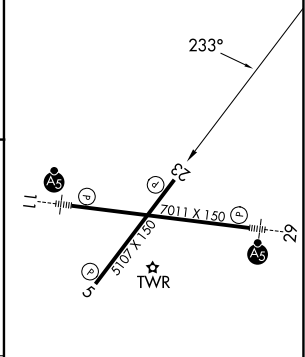
LAURENCE G HANSCOM FLD (BED)

RNP APCH - GPS.		MISSED APPROACH: Climb to 3000 direct CACVA and on track 211° to WHYBE and hold.		
	Rwy 23 helicopter visibility reduction below 3/4 SM NA.			

ATIS <b>124.6</b>	BOSTON APP CON <b>124.4 279.6</b>	<b>HANSCOM TOWER★</b> <b>118.5 (CTAF) 257.2</b>	GND CON <b>121.7</b>	UNICOM <b>122.95</b>
----------------------	--------------------------------------	--	-------------------------	-------------------------



ELEV	132		TDZE	128
------	-----	--	------	-----



CATEGORY	A	B	C	D
LNVA MDA	660-1	532 (600-1)	660-1½	532 (600-1½)
CIRCLING	720-1	588 (600-1)	880-2¼ 748 (800-2¼)	920-2½ 788 (800-2½)

MIRL Rwy 5-23

HIRL Rwy 11-29

REIL Rws 5 and 23

NE-1, 14 MAY 2026 to 11 JUN 2026

NE-1, 14 MAY 2026 to 11 JUN 2026