

ILS or LOC/DME RWY 4

NEW ORLEANS NAS JRB
(ALVIN CALLENDER FLD) (KNBG)

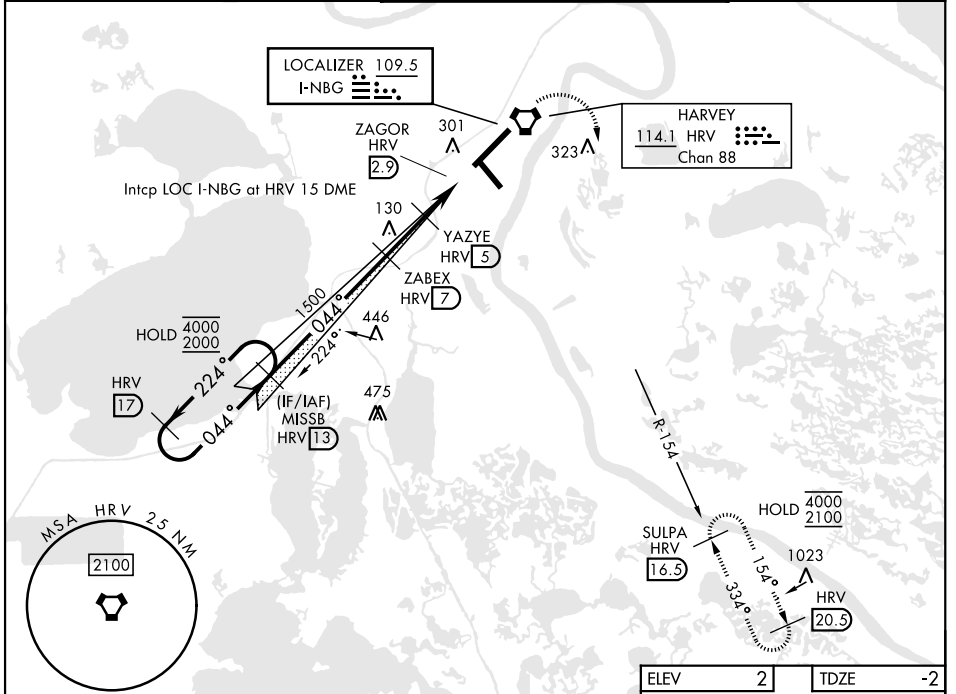
LOC I-NBG 109.5	APCH CRS 044°	Rwy ldg 10,000 TDZE Arpt Elev 2	[USN]
---------------------------	-------------------------	---	-------

* When ALS inop, increase vis to 3/4 mile.
 ** When ALS inop, increase CAT AB vis to 1 mile;
 CAT CDE vis to 1 1/8 miles.
 *** Circling not authorized for CAT E NW of Rwy 4-22.

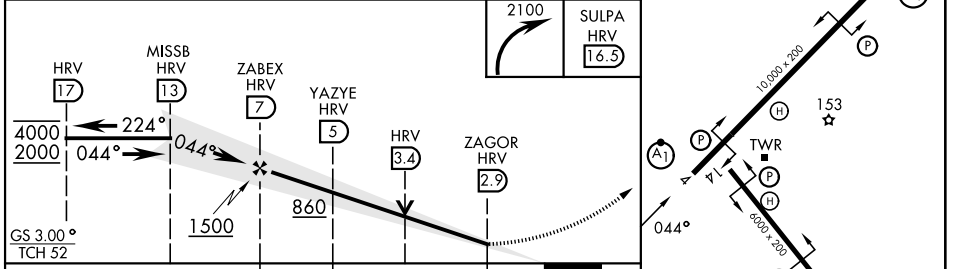
ALSF-1

MISSED APPROACH: Climbing right turn to 2100 direct SULPA and hold.

ATIS★ 279.55	APP CON 123.85 256.9	NAVY NEW ORLEANS TOWER★ 123.8 340.2 (CTAF)	GND CON 121.6 270.35	ASR/ PAR
------------------------	--------------------------------	--	--------------------------------	-------------



ELEV 2 TDZE -2



CATEGORY	A	B	C	D	E
S-ILS 4 *	198-1/2		200	(200-1/2)	
S-LOC 4 **	380-1/2	382 (400-1/2)	380-5/8	382	(400-3/8)
CIRCLING ***	640-1	638 (700-1)	640-1 3/4 638 (700-1 3/4)	660-2 658 (700-2)	680-2 1/2 678 (700-2 1/2)

FAF to MAP 4.1 NM					
Knots	60	90	120	150	180
Min:Sec	4:06	2:44	2:03	1:38	1:22

NEW ORLEANS, LOUISIANA 29°50'N-90°02'W NEW ORLEANS NAS JRB (KNBG)
(ALVIN CALLENDER FLD)

ILS or LOC/DME RWY 4

SC-4, 14 MAY 2026 to 11 JUN 2026

SC-4, 14 MAY 2026 to 11 JUN 2026