

NEW ORLEANS, LOUISIANA

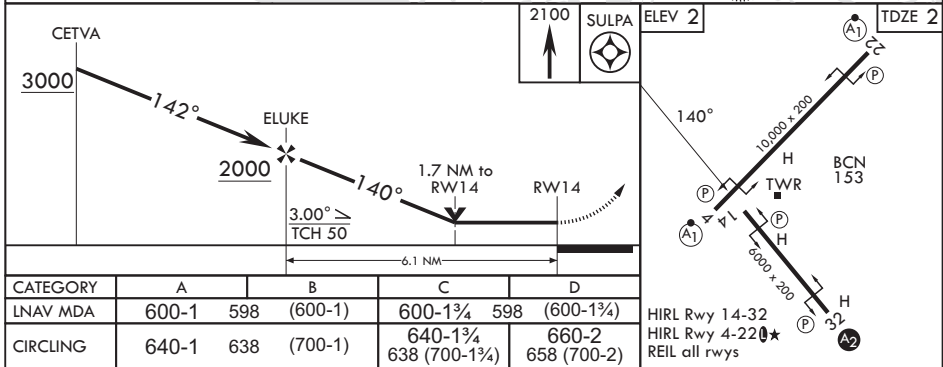
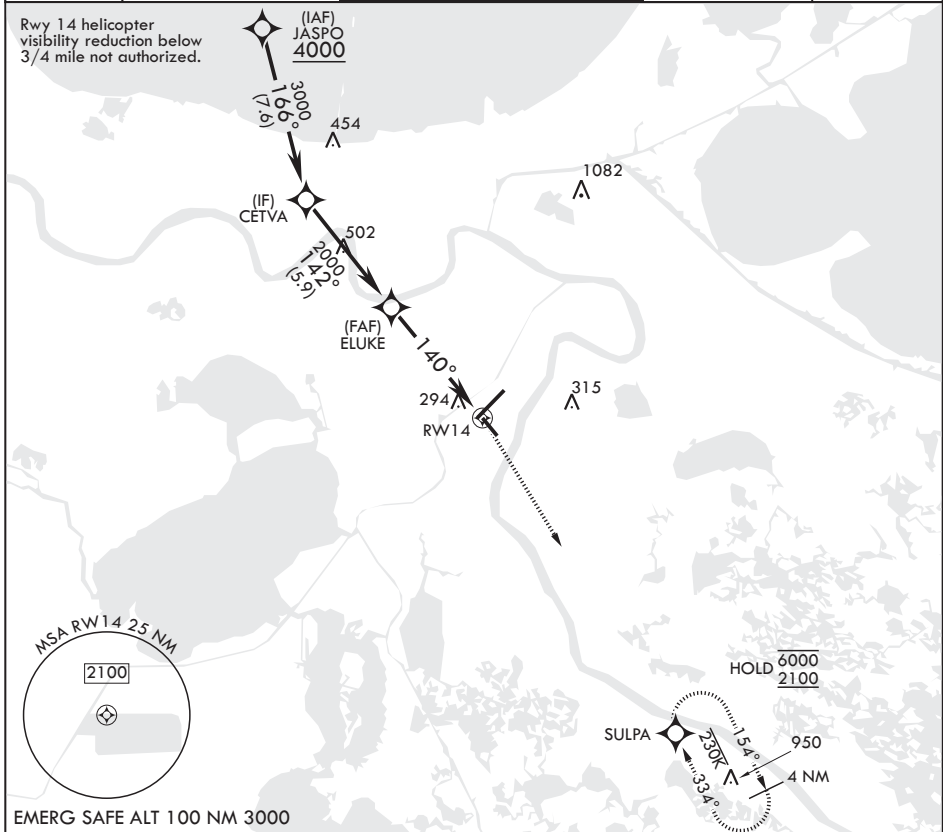
RNAV (GPS) RWY 14

(USN)
NEW ORLEANS NAS JRB (ALVIN CALLENDER FLD) (KNBG)

APCH CRS	Rwy Idg	6000
140°	TDZE	2
	Arprt Elev	2

RNP APCH-GPS	MISSED APPROACH: Climbing right turn to 2100 direct SULPA and hold.
--------------	---

ATIS* 279.55	APP CON/DEP CON 123.85 256.9	NAVY NEW ORLEANS TOWER* 123.8 340.2 (CTAF)	GND CON 121.6 270.35	ASR/PAR
-----------------	---------------------------------	---	-------------------------	---------



NEW ORLEANS, LOUISIANA 29°50'N - 90°02'W NEW ORLEANS NAS JRB (ALVIN CALLENDER FLD) (KNBG)

Amdt 3 10JUL25

RNAV (GPS) RWY 14

SC-4, 14 MAY 2026 to 11 JUN 2026

SC-4, 14 MAY 2026 to 11 JUN 2026