

NEW ORLEANS, LOUISIANA

RNAV (GPS) RWY 22

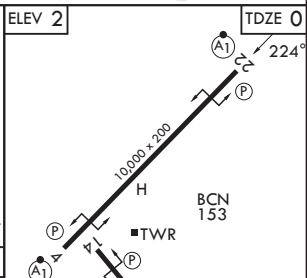
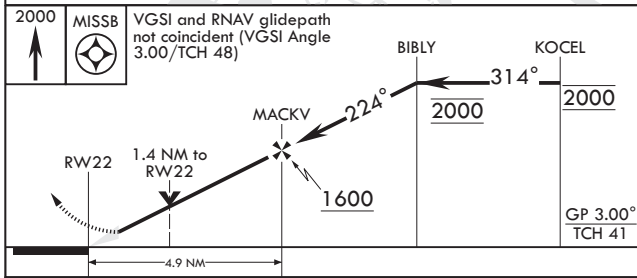
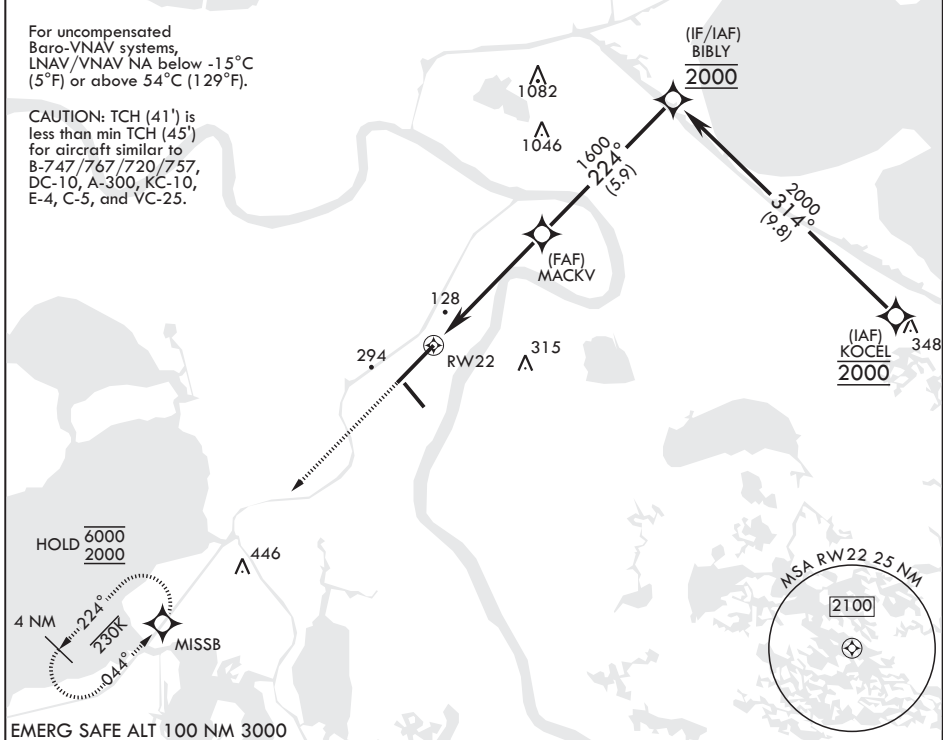
(USN)
NEW ORLEANS NAS JRB (ALVIN CALLENDER FLD) (KNBG)

WAAS CH 60141 W22A	APCH CRS 224°	Rwy ldg TDZE Arprt Elev	10,000 0 2
---------------------------------	-------------------------	-------------------------------	---------------------------------------

RNP APCH-GPS
 ▼ * When ALS inop, increase vis to 3/4 mile.
 ** When ALS inop, increase vis to 1 1/8 miles.
 *** When ALS inop, increase CAT AB vis to 1 mile; CAT CD vis to 1 3/8 miles.

ALSF-1
 MISSED APPROACH: Climbing left turn to 2000 direct MISSB and hold.

ATIS* 279.55	APP CON/DEP CON 123.85 256.9	NAVY NEW ORLEANS TOWER* 123.8 0* 340.2 (CTAF)	GND CON 121.6 270.35	ASR/PAR
------------------------	--	---	--------------------------------	---------



CATEGORY	A	B	C	D
LPV DA*	200-1/2	200	(200-1/2)	
LNAV/VNAV DA**	409-3/4	409	(500-3/4)	
LNAV MDA***	480-1/2	480 (500-1/2)	480-1	480 (500-1)
CIRCLING	640-1	638 (700-1)	640-1 3/4 638 (700-1 3/4)	660-2 658 (700-2)

ELEV 2 TDZE 0
 GP 3.00° TCH 41
 HIRL Rwy 14-32
 HIRL Rwy 4-22
 REIL all rwys

NEW ORLEANS, LOUISIANA
 Amdt 4 20MAR25

29°50'N - 90°02'W NEW ORLEANS NAS JRB (ALVIN CALLENDER FLD) (KNBG)

RNAV (GPS) RWY 22

SC-4, 14 MAY 2026 to 11 JUN 2026

SC-4, 14 MAY 2026 to 11 JUN 2026