

NEW ORLEANS, LOUISIANA

# VOR/DME or TACAN Z RWY 22

NEW ORLEANS NAS JRB  
(ALVIN CALLENDER FLD) (KNBG)

VORTAC HRV <b>114.1</b> Chan <b>88</b>	APCH CRS <b>237°</b>	Rwy Idg TDZE Arpt Elev <b>10,000</b> <b>0</b> <b>2</b>
--	-------------------------	---

[USN]

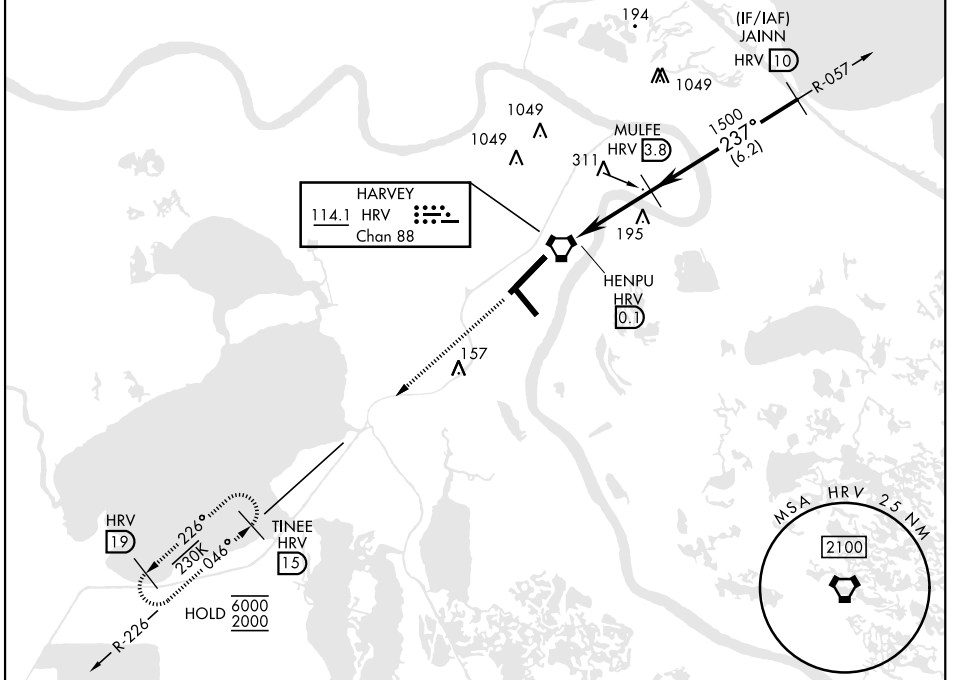
▼ \* When ALS inop, increase CAT AB vis to 1 mile, CAT CD vis to 1½ miles.



MISSED APPROACH: Climb to 2000 on HVR R-226 to TINEE and hold.

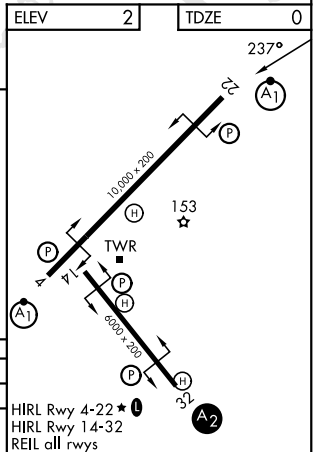
ATIS★ <b>279.55</b>	APP CON <b>123.85 256.9</b>	NAVY NEW ORLEANS TOWER★ <b>123.8 340.2</b> (CTAF)	GND CON <b>121.6 270.35</b>	ASR/ PAR
------------------------	--------------------------------	--	--------------------------------	-------------

CAUTION: FAC is 602' from RCL at 3000' from threshold.



EMERG SAFE ALT 100 NM 3000

2000 ↑ HRV R-226	TINEE HRV 15	JAINN HRV 10		
HENPU HRV 0.1	MULFE HRV 3.8			
HRV VORTAC HRV 0.6				
0.9	3.7 NM			
3.00° TCH 48				
1500	2000			
CATEGORY	A	B	C	D
S-22*	480-5/8	480 (500-5/8)	480-1	480 (500-1)
CIRCLING	640-1	638 (700-1)	640-1 3/4 638 (700-1 3/4)	660-2 658 (700-2)



NEW ORLEANS, LOUISIANA

29°50'N-90°02'W

NEW ORLEANS NAS JRB (KNBG)  
(ALVIN CALLENDER FLD)

# VOR/DME or TACAN Z RWY 22

Amtd 1 04SEP25

SC-4, 14 MAY 2026 to 11 JUN 2026

SC-4, 14 MAY 2026 to 11 JUN 2026