

NEW ORLEANS, LOUISIANA

# VOR/DME or TACAN Z RWY 4

NEW ORLEANS NAS JB  
(ALVIN CALLENDER FLD) (KNBG)

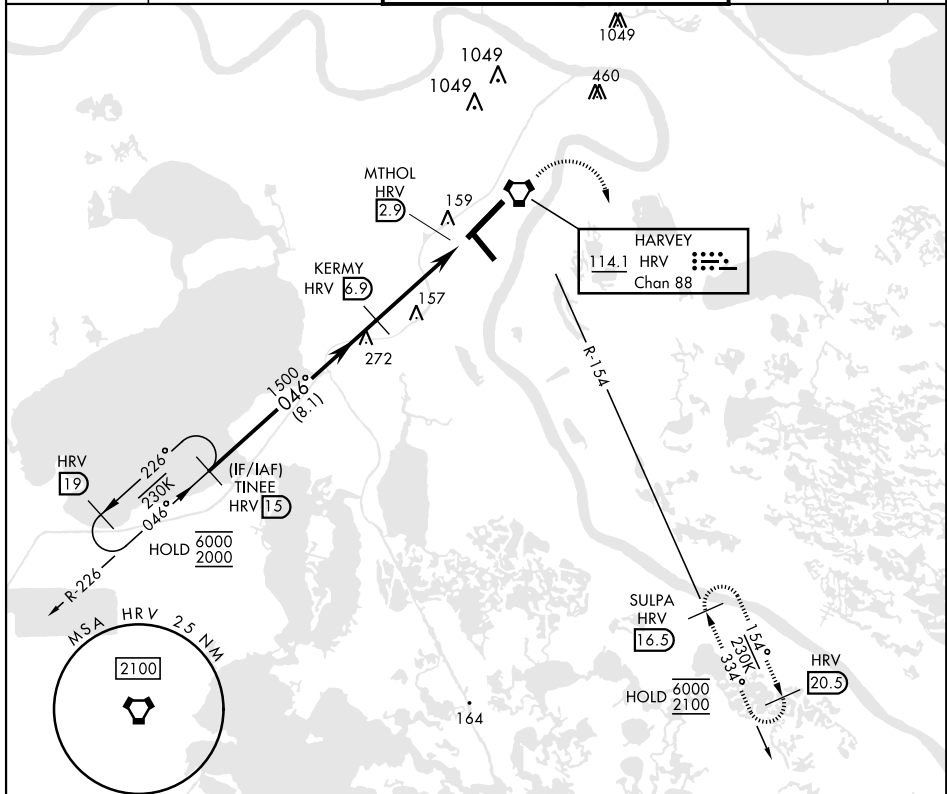
VORTAC HRV <b>114.1</b> Chan <b>88</b>	APCH CRS <b>046°</b>	Rwy ldg TDZE Arprt Elev <b>10,000</b> <b>-2</b> <b>2</b>
--	-------------------------	---

[USN]



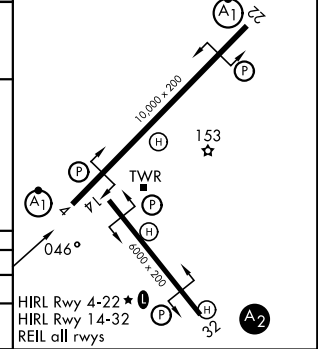
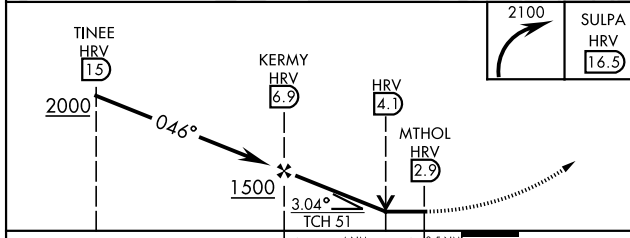
MISSED APPROACH: Climbing right turn to 2100  
direct SULPA and hold.

ATIS★ <b>279.55</b>	APP CON <b>123.85 256.9</b>	NAVY NEW ORLEANS TOWER★ <b>123.8 340.2</b> (CTAF)	GND CON <b>121.6 270.35</b>	ASR/ PAR
------------------------	--------------------------------	--	--------------------------------	-------------



EMERG SAFE ALT 100 NM 3000

ELEV	2	TDZE	-2
------	---	------	----



CATEGORY	A	B	C	D
S-4 *	600-½ 602	(600-½)	600-1⅓ 602	(600-1⅓)
CIRCLING	640-1 638	(700-1)	640-1⅓ 638	(700-1⅓) 660-2 658

HIRL Rwy 4-22★  
HIRL Rwy 14-32  
REIL all rwy's

NEW ORLEANS, LOUISIANA  
Amdt 1 04SEP25

29° 50' N-90° 02' W

NEW ORLEANS NAS JB (KNBG)  
(ALVIN CALLENDER FLD)

# VOR/DME or TACAN Z RWY 4

SC-4, 14 MAY 2026 to 11 JUN 2026

SC-4, 14 MAY 2026 to 11 JUN 2026