

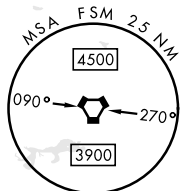
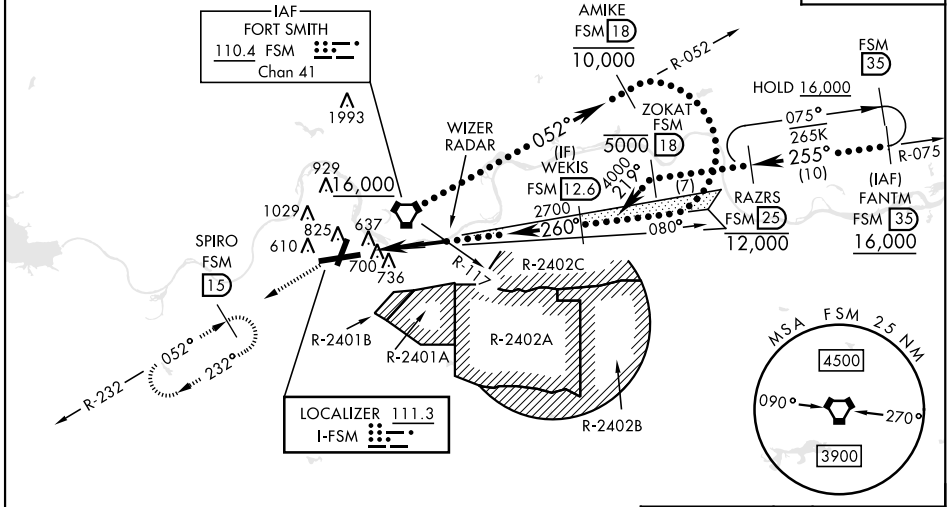
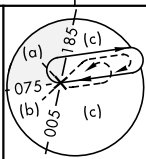
# HI-ILS Y or LOC Y RWY 26

LOC I-FSM <b>111.3</b>	APCH CRS <b>260°</b>	Rwy ldg TDZE Arprt Elev <b>9317</b> <b>448</b> <b>469</b>	[USAF] FORT SMITH RGNL (EBBING FLD ANGB) (KFSM)
DME required		MALSR <b>A5</b>	MISSED APPROACH: Climb to 1400 then climbing left turn to 4000 on heading 224° and FSM VORTAC R-232 to SPIRO/FSM (15 DME) and hold. Continue climb in hold to 4000.
* When ALS inop, increase CAT E RVR to 40. ** When ALS inop, increase CAT CDE vis to 1½ miles. ▲ NA when control tower closed.			

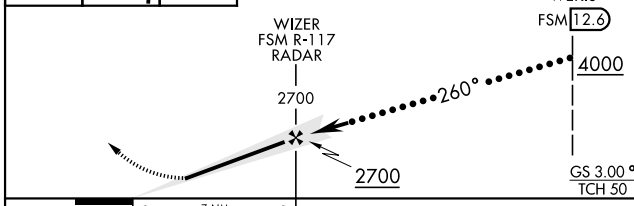
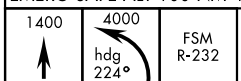
ATIS <b>124.775</b>	RAZORBACK APP CON * <b>120.9 343.75</b>	TOWER* <b>118.3 (CTAF) 0 323.175</b>	GND CON <b>121.9 275.8</b>	CLNC DEL <b>133.85 278.3</b>	ASR
------------------------	--	---	-------------------------------	---------------------------------	-----

\*\*\* Circling not authorized for CAT E NW of Rwy 8 and Rwy 20.  
 Circling not authorized for CAT E when R-2401B active.  
 Circling Rwy 20 and Rwy 26 not authorized at night.  
 RVR 1800 Authorized with use of FD or AP or HUD to DA.

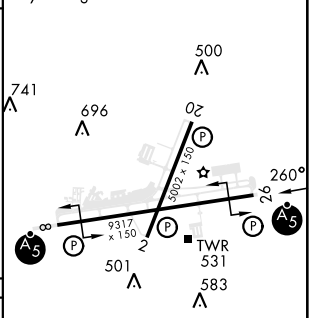
Procedure not authorized for arrivals on FSM VORTAC Airway Radials 359 CW 105.



EMERG SAFE ALT 100 NM 4500 FROM FSM VORTAC



ELEV 469	TDZE 448
Rwy 02 ldg 5001'	618 ▲
Rwy 20 ldg 5001'	



CATEGORY	C	D	E
S-ILS 26 *	648/24	200 (200-½)	
S-LOC 26 **	960-55	512 (600-1)	
CIRCLING ***	1400-2¾ 931 (1000-2¾)	1400-3	931 (1000-3)

HIRL Rwy 8-26	
MIRL Rwy 2-20	
FAF to MAP 7 NM	
Knots	120 140 160 180 200
Min:Sec	3:30 3:00 2:38 2:20 2:06

# HI-ILS Y or LOC Y RWY 26

SC-1, 14 MAY 2026 to 11 JUN 2026

SC-1, 14 MAY 2026 to 11 JUN 2026