

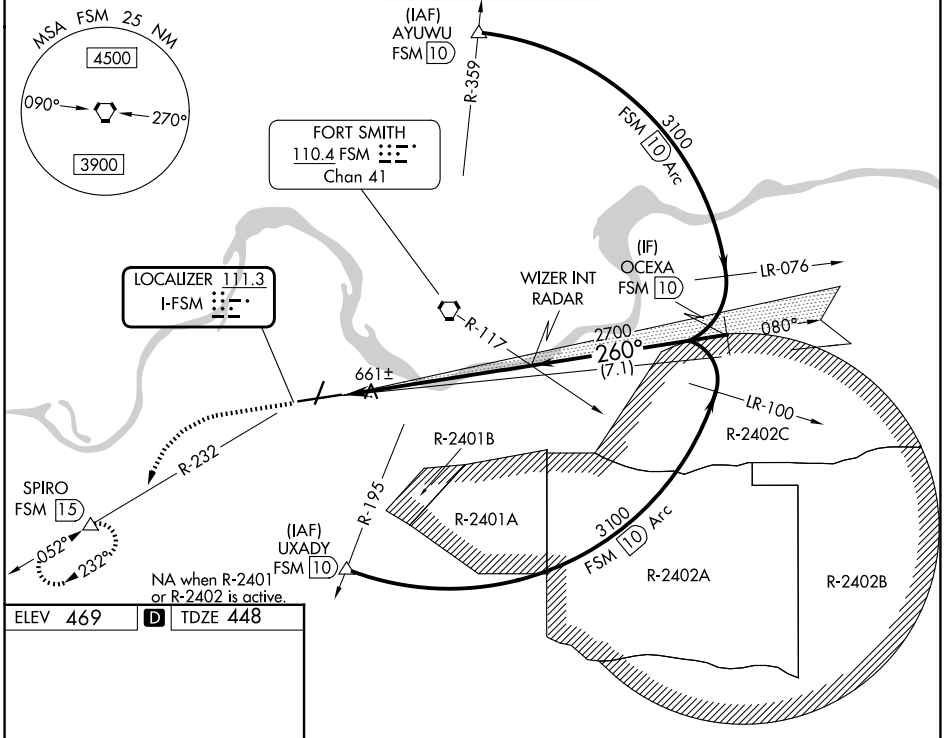
LOC I-FSM 111.3	APP CRS 260°	Rwy Ldg TDZE Apt Elev	9318 448 469
---------------------------	------------------------	-----------------------------	---

ILS Z or LOC Z RWY 26

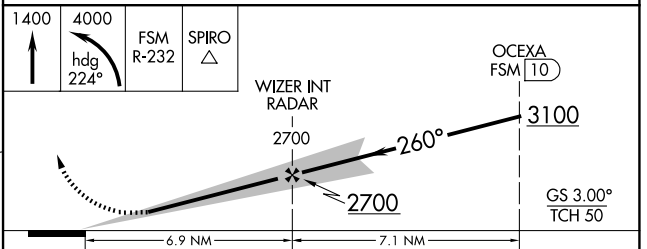
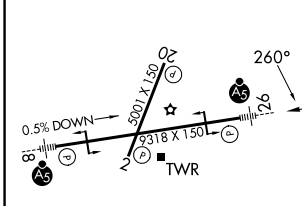
FORT SMITH RGNL (FSM)

DME required.		MALSR	MISSED APPROACH: Climb to 1400 then climbing left turn to 4000 on heading 224° and FSM VORTAC R-232 to SPIRO/FSM 15 DME and hold, continue climb-in-hold to 4000.
<p>⚠ Circling NA for Cat E when R-2401B active. Circling NA for Cat E northwest of Rwy 8 and 20. For inop ALS, increase S-ILS 26 Cat E visibility to RVR 4000 and S-LOC 26 Cat C/D/E to 1½ SM. Circling Rwy 20, 26 NA at night. *RVR 1800 authorized with use of FD or AP or HUD to DA.</p>			

ATIS 124.775	RAZORBACK APP CON * 120.9 343.75	FORT SMITH TOWER * 118.3(CTAF) 323.175	GND CON 121.9 275.8	UNICOM 122.95
------------------------	--	--	-------------------------------	-------------------------



ELEV 469	D	TDZE 448
----------	----------	----------



CATEGORY	A	B	C	D	E
S-ILS 26 *	648/24 200 (200-½)				
S-LOC 26	960/24	512 (500-½)	960/55	512 (500-1)	
CIRCLING	1140-1	671 (700-1)	1400-2¾ 931(1000-2¾)	1400-3	931 (1000-3)

FORT SMITH, ARKANSAS
Amdt 23 15JUN23

FORT SMITH RGNL (FSM)
ILS Z or LOC Z RWY 26
35°20'N-94°22'W

SC-1, 14 MAY 2026 to 11 JUN 2026

SC-1, 14 MAY 2026 to 11 JUN 2026