

WAAS CH <b>87117</b> <b>W26A</b>	APP CRS <b>260°</b>	Rwy Ldg TDZE Apt Elev	<b>9318</b> <b>448</b> <b>469</b>
--	------------------------	-----------------------------	---

# RNAV (GPS) RWY 26

FORT SMITH RGNL (F'SM)

RNP APCH - GPS.

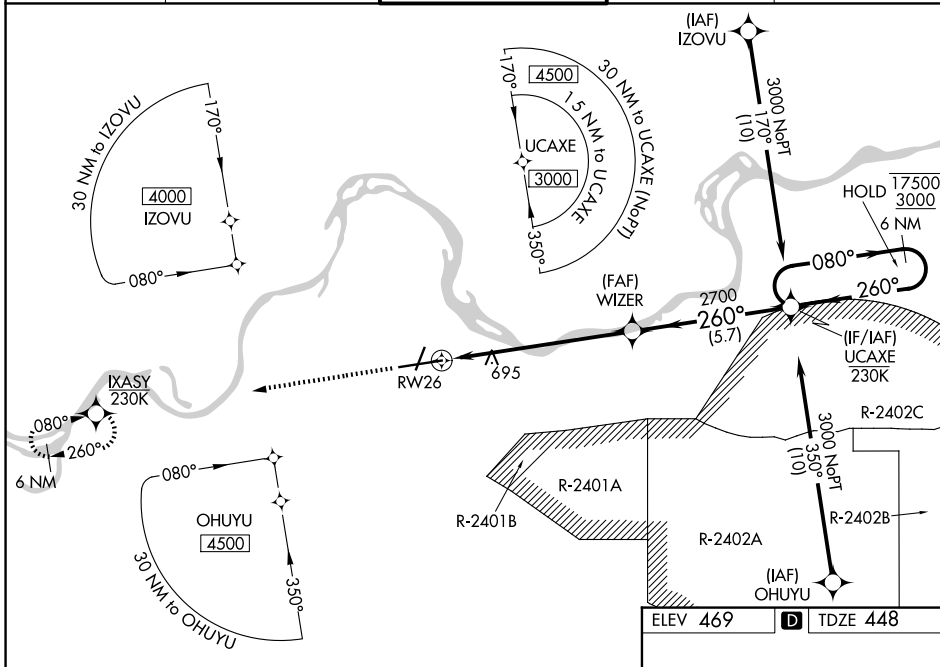
**▽** Circling NA for Cat E northwest of Rwy 8 and 20. Circling Rwy 20, 26 NA at night.  
**△** For uncompensated Baro-VNAV systems, LNAV/VNAV NA below -11°C or above 54°C.  
**ASR** Circling NA for Cat E NA when R-2401B active. For inop ALS, increase LPV Cat E visibility to RVR 4000, LNAV/VNAV all Cats visibility to 1 3/8 SM, and LNAV Cat E visibility to 1 3/8 SM.  
 \*RVR 1800 authorized with use of FD or AP or HUD to DA.

MALSRL



**MISSED APPROACH:**  
Climb to 3000 direct IXASY and hold.

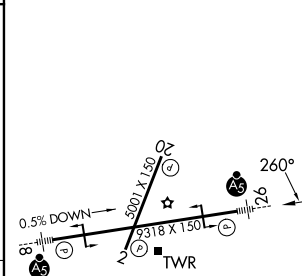
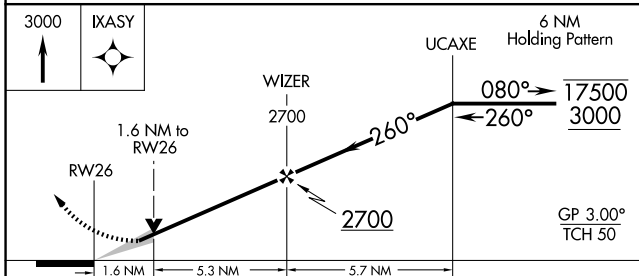
ATIS <b>124.775</b>	RAZORBACK APP CON * <b>120.9 343.75</b>	FORT SMITH TOWER * <b>118.3(CTAF) 323.175</b>	GND CON <b>121.9 275.8</b>	UNICOM <b>122.95</b>
------------------------	--	--	-------------------------------	-------------------------



SC-1, 14 MAY 2026 to 11 JUN 2026

SC-1, 14 MAY 2026 to 11 JUN 2026

ELEV 469	<b>D</b>	TDZE 448
----------	----------	----------



CATEGORY	A	B	C	D	E
LPV DA *	648/24		200 (200-1/2)		
LNAV/VNAV DA	962/55		514 (500-1)		
LNAV MDA	1000/24 552 (600-1/2)		1000/60		552 (600-1 1/4)
CIRCLING	1140-1 671 (700-1)		1400-2 3/4 931 (1000-2 3/4)		1400-3 931 (1000-3)

HIRL Rwy 8-26 **0**  
 MIRL Rwy 2-20 **0**