

VORTAC FSM 110.4 Chan 41	APP CRS 225°	Rwy Ldg 9318 TDZE 448 Apt Elev 469
--	------------------------	---

VOR Z or TACAN Z RWY 26

FORT SMITH RGNL (FSM)

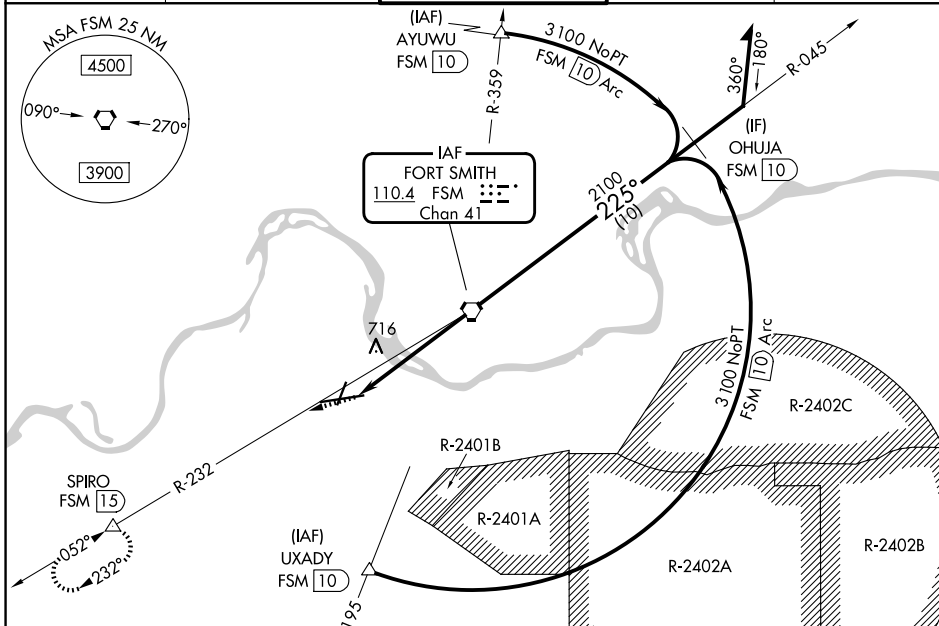
DME required.

▼ Rwy 26 helicopter visibility reduction below RVR 5000 NA. Inop table does not apply.
▲ Circling Cat E NA when R-2401B active. Arc segment R-195 CCW: NA when restricted areas R-2401 and R-2402 in effect. Circling NA for Cat E northwest of Rwy 8 and Rwy 20. Straight-in Rwy 26 NA at night. Circling Rwy 20, 26 NA at night.



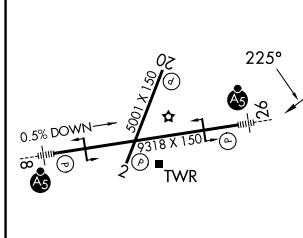
MISSED APPROACH: Climb to 4000 on FSM VORTAC R-232 to SPIRO/15 DME and hold, continue climb-in-hold to 4000.

ATIS 124.775	RAZORBACK APP CON * 120.9 343.75	FORT SMITH TOWER * 118.3 (CTAF) 323.175	GND CON 121.9 275.8	UNICOM 122.95
------------------------	--	---	-------------------------------	-------------------------



ELEV 469	D	TDZE 448
----------	----------	----------

Procedure NA for arrival on FSM VORTAC airway radials 036 CW 090.



4000	SPIRO	△	Remain within 15 NM
FSM R-232	FSM VORTAC	045°	3700
FSM 4.9	≤ 3.06°	TCH 50	2100
4.9 NM			

CATEGORY	A	B	C	D	E
S-26	980/55	532 (600-1)	980-1½	532 (600-1½)	
CIRCLING	1140-1	671 (700-1)	1400-2¾ 931 (1000-2¾)	1400-3	931 (1000-3)

VOR Z or TACAN Z RWY 26

SC-1, 14 MAY 2026 to 11 JUN 2026

SC-1, 14 MAY 2026 to 11 JUN 2026