

LOC I-LOW **110.7**
 APP CRS **012°**
 Rwy Ldg **8400**
 TDZE **6649**
 Apt Elev **6649**

ILS or LOC RWY 1

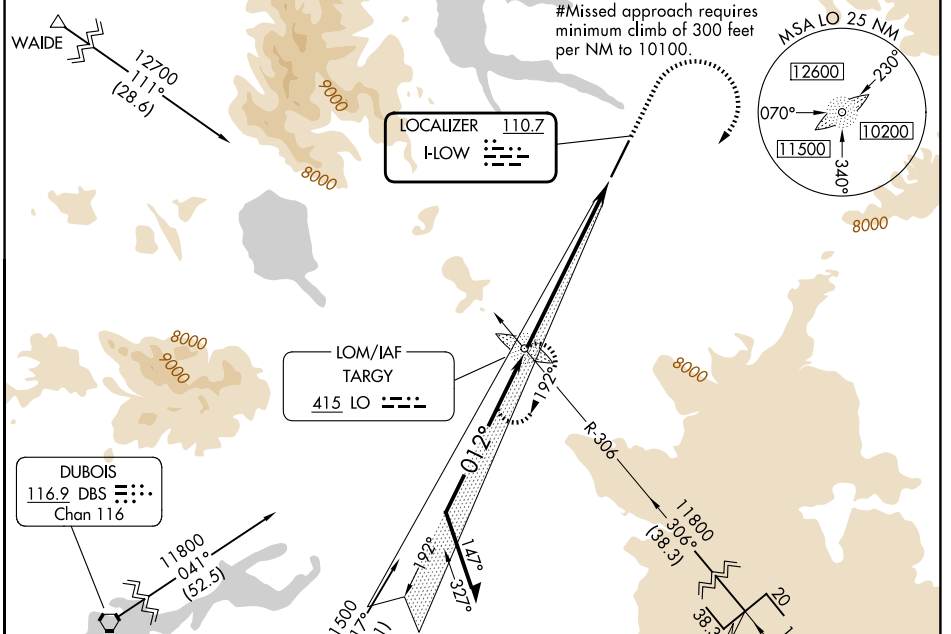
YELLOWSTONE (WYS)

ADF required. DME required for MUPDE stepdown fix.

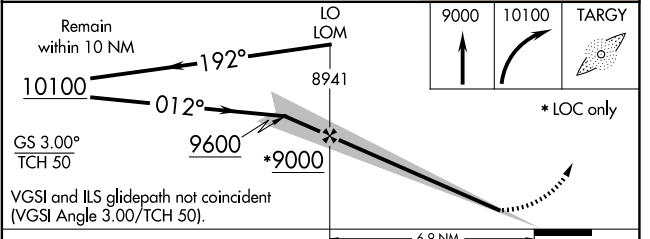
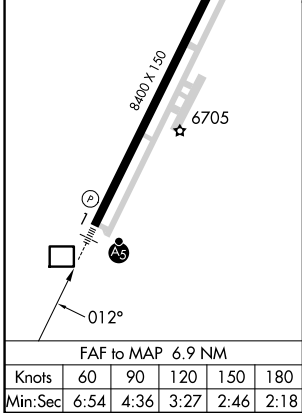
MALSRS MISSED APPROACH: Climb to 9000, then climbing right turn to 10100 direct TARGY LOM and hold.

Obtain local altimeter setting on CTAF, when not received procedure
 NA NA. Inoperative table does not apply to S-LOC 1 Cat A. For inoperative MALSRS, increase S-ILS 1 all Cats visibility to 2 3/4 mile.

AWOS-3P **118.1** SALT LAKE CENTER **132.4 338.3** UNICOM **123.0 (CTAF)**



ELEV 6649 TDZE 6649
 HIRL Rwy 1-19
 REIL Rwy 19



| CATEGORY | A | B | C | D |
|----------|---------------------------------|---------------------------------|---------------------------------|-------------------------|
| S-ILS 1# | | 6849-1/2 | 200 (200-1/2) | |
| S-ILS 1 | | 7449-2 1/4 | 800 (800-2 1/4) | |
| S-LOC 1 | 7780-1 1/4 1131 (1200-1 1/4) | 7780-1 1131 (1200-1) | 7780-2 1/2 1131 (1200-2 1/2) | 8020-3 1371 (1400-3) |
| CIRCLING | 7780-1 1/4 1131 (1200-1 1/4) | 7780-1 1/2 1131 (1200-1 1/2) | 7780-3 1131 (1200-3) | 8020-3 1371 (1400-3) |

NW-1, 14 MAY 2026 to 11 JUN 2026

NW-1, 14 MAY 2026 to 11 JUN 2026