

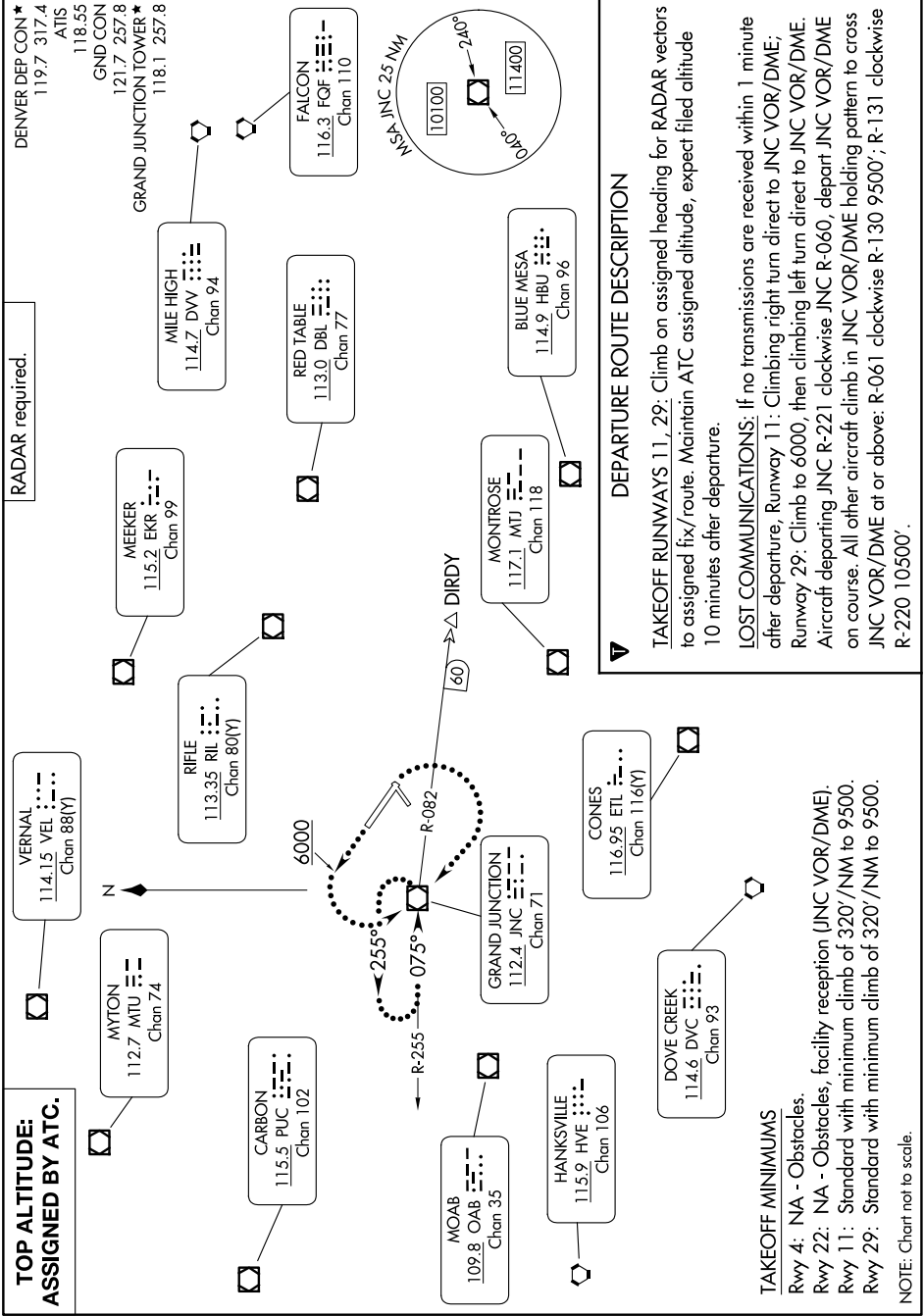
# GRAND MESA TWO DEPARTURE

AL-634 (FAA)

GRAND JUNCTION RGNL (GJT)

GRAND JUNCTION, COLORADO

SW-1, 14 MAY 2026 to 11 JUN 2026



**TOP ALTITUDE:  
ASSIGNED BY ATC.**

**RADAR required.**

### DEPARTURE ROUTE DESCRIPTION

**TAKEOFF RUNWAYS 11, 29:** Climb on assigned heading for RADAR vectors to assigned fix/route. Maintain ATC assigned altitude, expect filed altitude 10 minutes after departure.

**LOST COMMUNICATIONS:** If no transmissions are received within 1 minute after departure, Runway 11: Climbing right turn direct to JNC VOR/DME; Runway 29: Climb to 6000, then climbing left turn direct to JNC VOR/DME. Aircraft departing JNC R-221 clockwise JNC R-060, depart JNC VOR/DME on course. All other aircraft climb in JNC VOR/DME holding pattern to cross JNC VOR/DME at or above: R-061 clockwise R-130 9500'; R-131 clockwise R-220 10500'.

**TAKEOFF MINIMUMS**

Rwy 4: NA - Obstacles.  
 Rwy 22: NA - Obstacles, facility reception (JNC VOR/DME).  
 Rwy 11: Standard with minimum climb of 320'/NM to 9500.  
 Rwy 29: Standard with minimum climb of 320'/NM to 9500.

NOTE: Chart not to scale.

# GRAND MESA TWO DEPARTURE

GRAND JUNCTION, COLORADO

GRAND JUNCTION RGNL (GJT)

SW-1, 14 MAY 2026 to 11 JUN 2026