

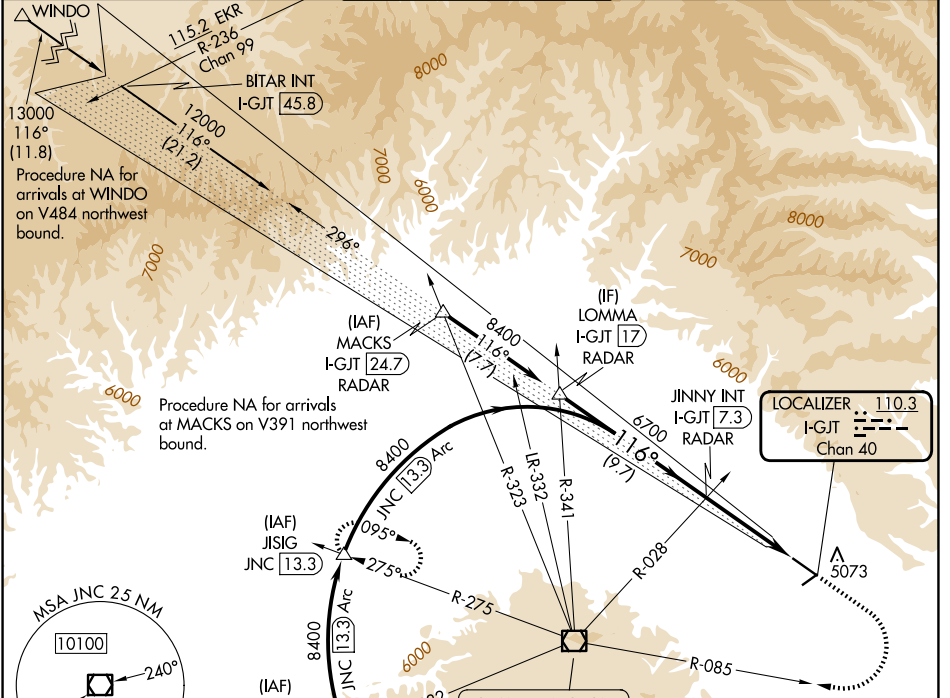
LOC/DME I-GJT 110.3 Chan 40	APP CRS 116°	Rwy Ldg TDZE Apt Elev	9339 4840 4861
--	------------------------	-----------------------------	---

ILS or LOC RWY 11

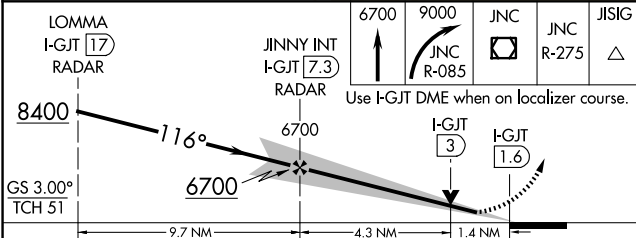
GRAND JUNCTION RGNL (GJT)

Circling NA for Cat D north of Rwy 11-29. Inop table does not apply to S-ILS 11 all Cats.	MISSED APPROACH: Climb to 6700 then climbing right turn to 9000 on JNC VOR/DME R-085 to JNC VOR/DME then on JNC VOR/DME R-275 to JISIG/JNC 13.3 DME and hold.

ATIS 118.55	DENVER APP CON * 119.7 317.4	GRAND JUNCTION TOWER * 118.1 (CTAF) 257.8	GND CON 121.7 257.8	UNICOM 122.95
-----------------------	--	---	-------------------------------	-------------------------

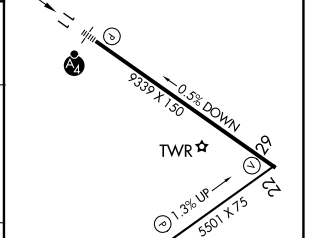


MSA JNC 25 NM	10100	11400
---------------	-------	-------



CATEGORY	A	B	C	D
S-ILS 11	5040/40 200 (200-¾)			
S-LOC 11	5340/40	500 (500-¾)	5340/60	500 (500-1¼)
CIRCLING	5380-1 519 (600-1)	5520-1 659 (700-1)	5840-3	979 (1000-3)

ELEV 4861	TDZE 4840
-----------	-----------



HIRL Rwy 11-29	MIRL Rwy 4-22	REIL Rwys 4, 22 and 29			
FAF to MAP 5.7 NM					
Knots	60	90	120	150	180
Min:Sec	5:42	3:48	2:51	2:17	1:54

SW-1, 14 MAY 2026 to 11 JUN 2026

SW-1, 14 MAY 2026 to 11 JUN 2026