

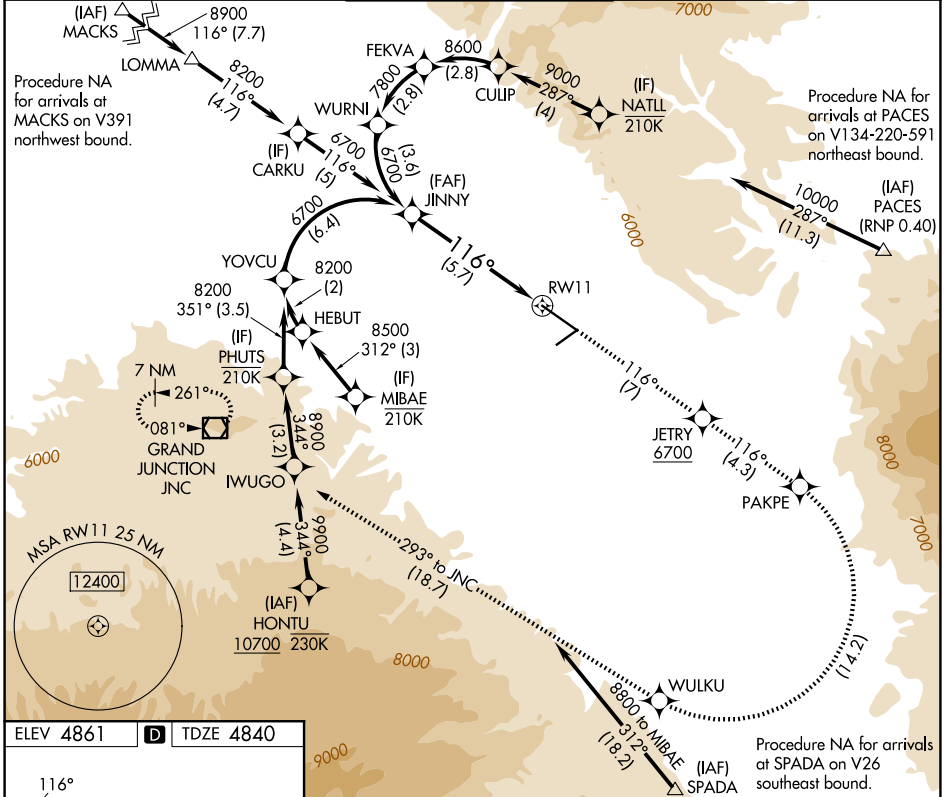
APP CRS 116°	Rwy Ldg TDZE Apt Elev	9339 4840 4861
------------------------	-----------------------------	---

RNAV (RNP) Z RWY 11

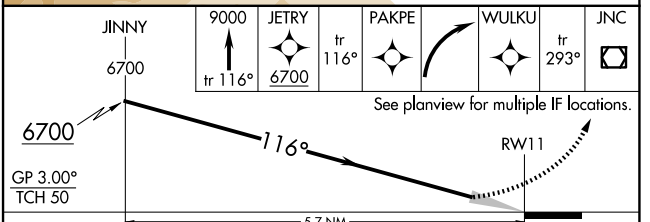
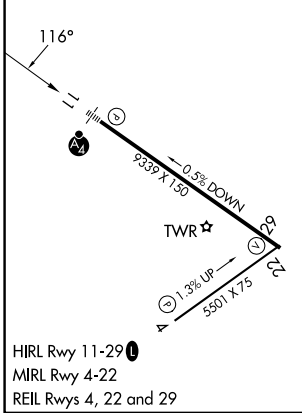
GRAND JUNCTION RGNL (GJT)

RNP AR APCH - GPS.		MALSFS	MISSED APPROACH: Climb to 9000 on track 116° to JETRY, cross JETRY at or above 6700, and track 116° to PAKPE, right turn to WULKU, and track 293° to JNC VOR/DME and hold.	
<p>▼ For uncompensated Baro-VNAV systems, procedure NA below -17°C or above 54°C. For inoperative ALS, increase RNP 0.30 all Cats visibility to 1½ SM.</p>				

ATIS 118.55	DENVER APP CON * 119.7 317.4	GRAND JUNCTION TOWER * 118.1 (CTAF) 257.8	GND CON 121.7 257.8	UNICOM 122.95
-----------------------	--	---	-------------------------------	-------------------------



ELEV 4861	D	TDZE 4840
-----------	----------	-----------



GP 3.00° TCH 50	A	B	C	D
RNP 0.10 DA		5183/40	343 (400-¾)	
RNP 0.30 DA		5346-1¼	506 (500-1¼)	

AUTHORIZATION REQUIRED

SW-1, 14 MAY 2026 to 11 JUN 2026

SW-1, 14 MAY 2026 to 11 JUN 2026