

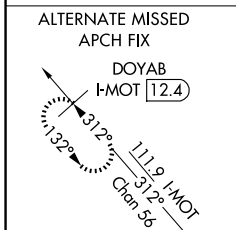
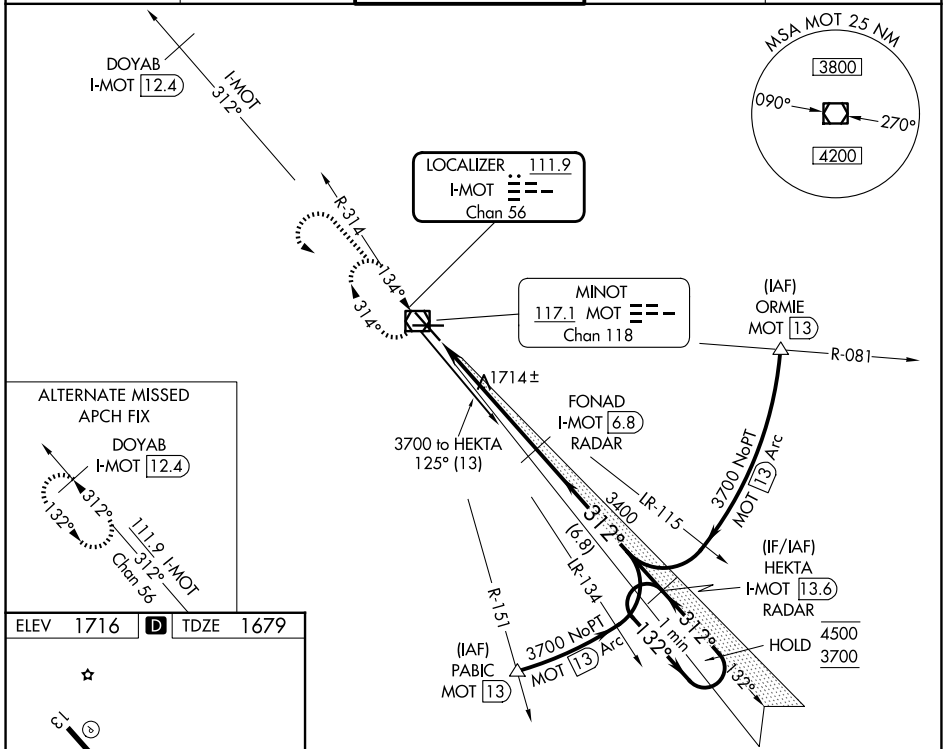
LOC/DME I-MOT 111.9 Chan 56	APP CRS 312°	Rwy Ldg 7700 TDZE 1679 Apt Elev 1716
---	------------------------	---

ILS or LOC RWY 31

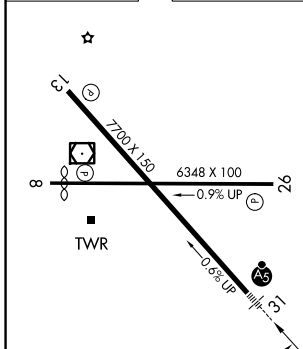
MINOT INTL (MOT)

DME or RADAR required.	MALSR 	MISSED APPROACH: Climb to 3700 then left turn direct MOT VOR/DME and hold.
▽ For Inop ALS, increase S-ILS 31 Cat E visibility to RVR 4000, and S-LOC 31 Cat C, D and E visibility to RVR 4500. △ Autopilot coupled approach NA below 2500.		

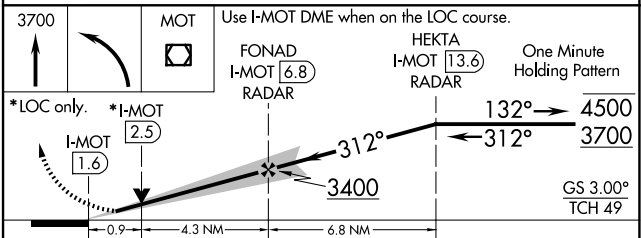
ASOS 118.725	MINOT APP CON * 119.6 363.8	MAGIC CITY TOWER * 118.2 (CTAF) 251.125	GND CON 121.9	UNICOM 122.95
------------------------	---------------------------------------	---	-------------------------	-------------------------



ELEV 1716	D	TDZE 1679
-----------	----------	-----------



REIL Rwy 13	REIL Rws 8 and 26	HIRL Rws 8-26 and 13-31			
FAF to MAP 5.2 NM					
Knots	60	90	120	150	180
Min:Sec	5:12	3:28	2:36	2:05	1:44



CATEGORY	A	B	C	D	E
S-ILS 31	1879/24 200 (200-½)				
S-LOC 31	1980/24 301 (300-½)		1980/40 301 (300-¾)		
CIRCLING	2200-1 484 (500-1)	2240-1 524 (600-1)	2800-3 1084 (1100-3)		

NC-1, 14 MAY 2026 to 11 JUN 2026

NC-1, 14 MAY 2026 to 11 JUN 2026