

WAAS CH <b>70399</b> W13A	APP CRS <b>132°</b>	Rwy Ldg TDZE Apt Elev	<b>7700</b> <b>1702</b> <b>1716</b>
---------------------------------	------------------------	-----------------------------	---

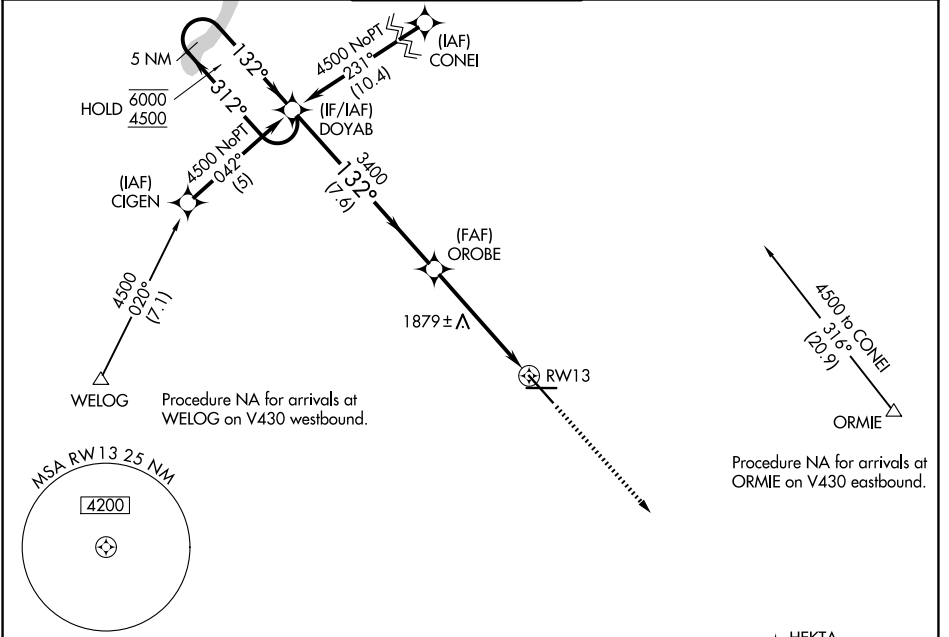
# RNAV (GPS) RWY 13

MINOT INTL (MOT)

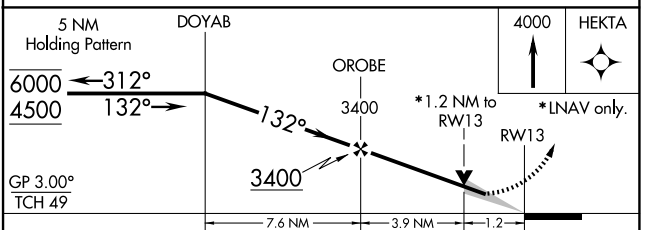
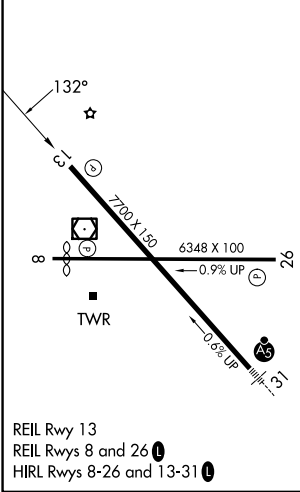
RNP APCH. MISSED APPROACH: Climb to 4000 direct HEKTA and hold.

For uncompensated Baro-VNAV systems, LNAV/VNAV NA below -18°C or above 54°C.

ASOS <b>118.725</b>	MINOT APP CON * <b>119.6 363.8</b>	MAGIC CITY TOWER * <b>118.2 (CTAF) 0 251.125</b>	GND CON <b>121.9</b>	UNICOM <b>122.95</b>
------------------------	---------------------------------------	---	-------------------------	-------------------------



ELEV 1716	<b>D</b>	TDZE 1702
-----------	----------	-----------



CATEGORY	A	B	C	D
LPV DA	2021-1 319 (400-1)			
LNAV/VNAV DA	2181-1¾ 479 (500-1¾)			
LNAV MDA	2140-1	438 (500-1)	2140-1¼ 438 (500-1¼)	2140-1½ 438 (500-1½)
CIRCLING	2200-1 484 (500-1)	2240-1 524 (600-1)	2800-3 1084 (1100-3)	

NC-1, 14 MAY 2026 to 11 JUN 2026

NC-1, 14 MAY 2026 to 11 JUN 2026