

WAAS CH 97616 W08A	APP CRS 084°	Rwy Ldg TDZE Apt Elev	5955 1712 1716
----------------------------------------	------------------------	-----------------------------	-------------------------------------------

RNAV (GPS) RWY 8

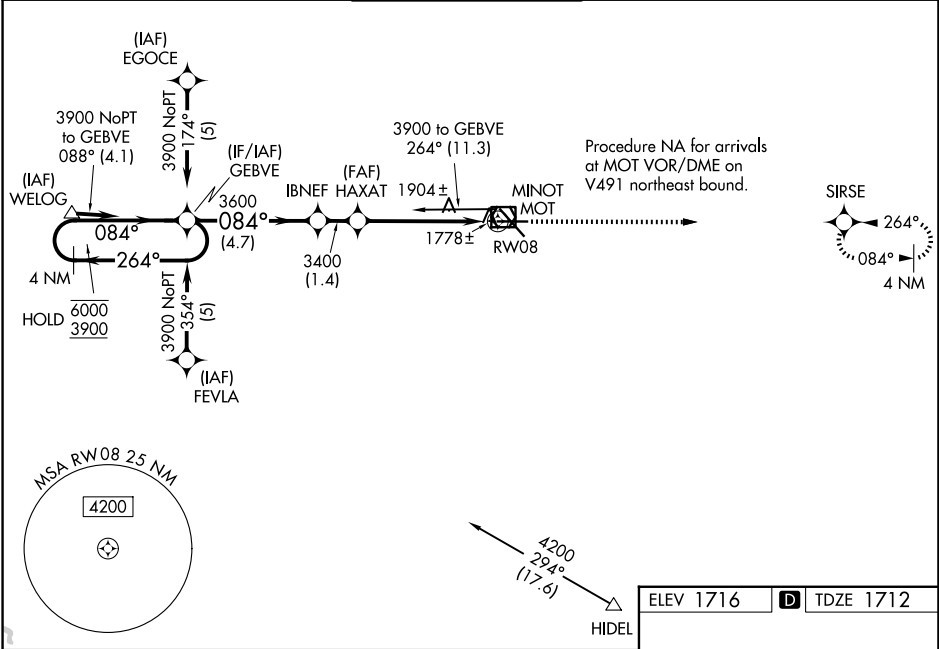
MINOT INTL (MOT)

RNP APCH.

▽ Rwy 8 helicopter visibility reduction below $\frac{3}{4}$ SM NA.
▲ For uncompensated Baro-VNAV systems, LNAV/VNAV NA below -18°C or above 54°C.

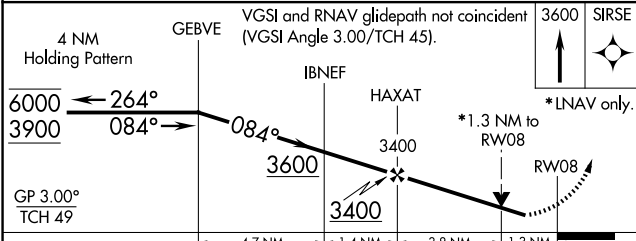
MISSED APPROACH:
Climb to 3600 direct
SIRSE and hold.

ASOS 118.725	MINOT APP CON * 119.6 363.8	MAGIC CITY TOWER * 118.2 (CTAF) 0 251.125	GND CON 121.9	UNICOM 122.95
------------------------	---------------------------------------	-----------------------------------------------------	-------------------------	-------------------------

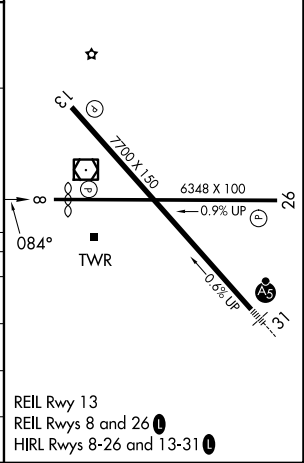


NC-1, 14 MAY 2026 to 11 JUN 2026

NC-1, 14 MAY 2026 to 11 JUN 2026



ELEV 1716	D TDZE 1712
-----------	--------------------



CATEGORY	A		B		C		D	
LPV DA	1991-1		279 (300-1)					
LNAV/ VNAV DA	2218-1 $\frac{3}{4}$		506 (600-1 $\frac{3}{4}$)					
LNAV MDA	2160-1	448 (500-1)	2160-1 $\frac{3}{8}$	448 (500-1 $\frac{3}{8}$)	2160-1 $\frac{1}{2}$	448 (500-1 $\frac{1}{2}$)		
CIRCLING	2200-1	484 (500-1)	2240-1	524 (600-1)	2800-3	1084 (1100-3)		