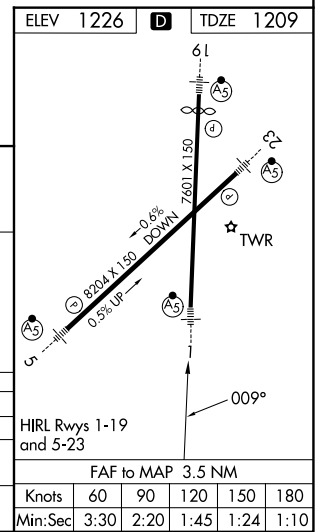
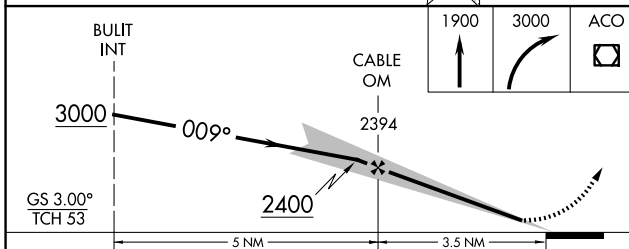
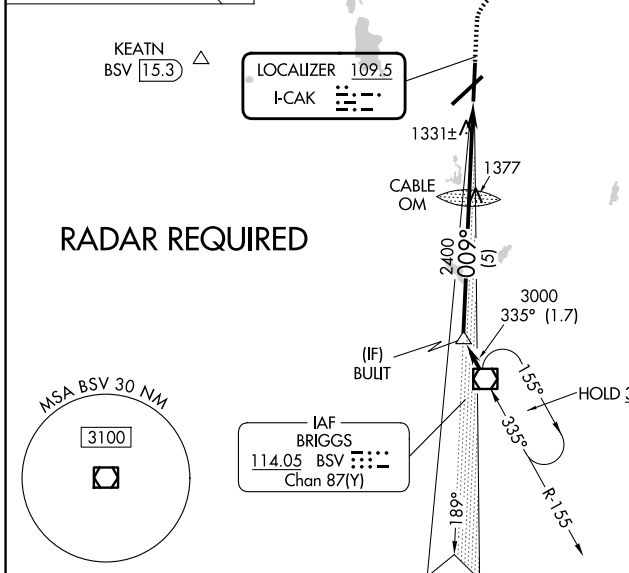
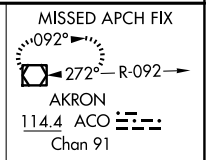
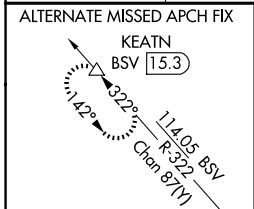


LOC I-CAK 109.5	APP CRS 009°	Rwy Ldg TDZE Apt Elev	7007 1209 1226
---------------------------	------------------------	-----------------------------	---

ILS or LOC RWY 1
AKRON-CANTON RGNL (CAK)

▽ ** RVR 1800 authorized with the use of FD or AP or HUD to DA.		MALSR 	MISSED APPROACH: Climb to 1900 then climbing right turn to 3000 direct ACO VOR/DME and hold.
--	--	-----------	--

ATIS 121.05	CLEVELAND APP CON* 125.5 269.25	AKRON-CANTON TOWER 134.75 279.575	GND CON 121.7 348.6
-----------------------	---	---	-------------------------------



CATEGORY	A	B	C	D
S-ILS 1 **	1409/24 200 (200-½)			
S-LOC 1	1600/24 391 (400-½)		1600/40 391 (400-¾)	
CIRCLING	1760-1 534 (600-1)	1780-1½ 554 (600-1½)	1800-2 574 (600-2)	

FAF to MAP 3.5 NM					
Knots	60	90	120	150	180
Min:Sec	3:30	2:20	1:45	1:24	1:10