

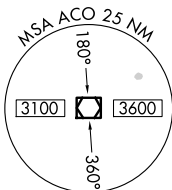
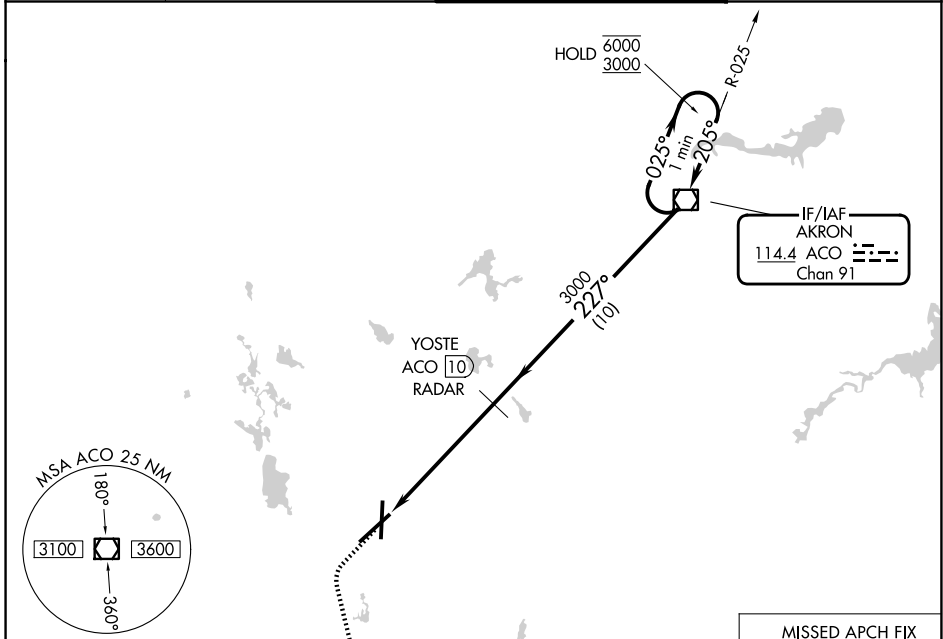
VOR/DME ACO 114.4 Chan 91	APP CRS 227°	Rwy Ldg TDZE 1226 Apt Elev 1226
---	------------------------	---

VOR RWY 23

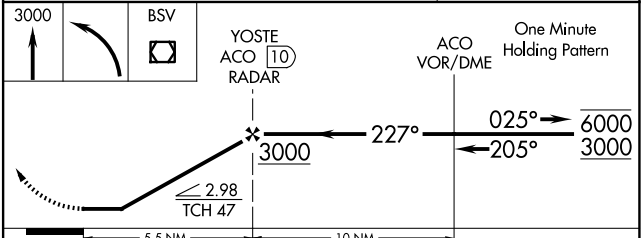
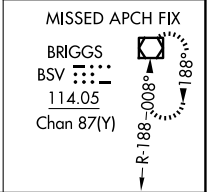
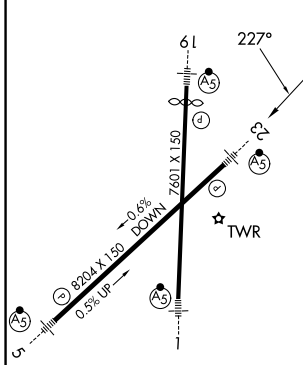
AKRON-CANTON RGNL (CAK)

DME or RADAR required.		MALSR	MISSED APPROACH: Climb to 3000 then left turn direct BSV VOR/DME and hold.
------------------------	--	-------	--

ATIS 121.05	CLEVELAND APP CON* 125.5 269.25	AKRON-CANTON TOWER 134.75 279.575	GND CON 121.7 348.6
-----------------------	---	---	-------------------------------



ELEV 1226	D	TDZE 1226
-----------	---	-----------



HIRL Rwy's 1-19 and 5-23
FAF to MAP 5.5 NM

Knots	60	90	120	150	180
Min:Sec	5:30	3:40	2:45	2:12	1:50

CATEGORY	A	B	C	D
S-23	1680/24 454 (500-½)		1680/40 454 (500-¾)	1680/50 454 (500-1)
CIRCLING	1760-1 534 (600-1)		1780-1½ 554 (600-1½)	1800-2 574 (600-2)

EC-2, 14 MAY 2026 to 11 JUN 2026

EC-2, 14 MAY 2026 to 11 JUN 2026