

| | | | |
|--|------------------------|-----------------------------|---------------------------------------|
| WAAS CH 45534 W28A | APP CRS 281° | Rwy Ldg TDZE Apt Elev | 8005 40 40 |
|--|------------------------|-----------------------------|---------------------------------------|

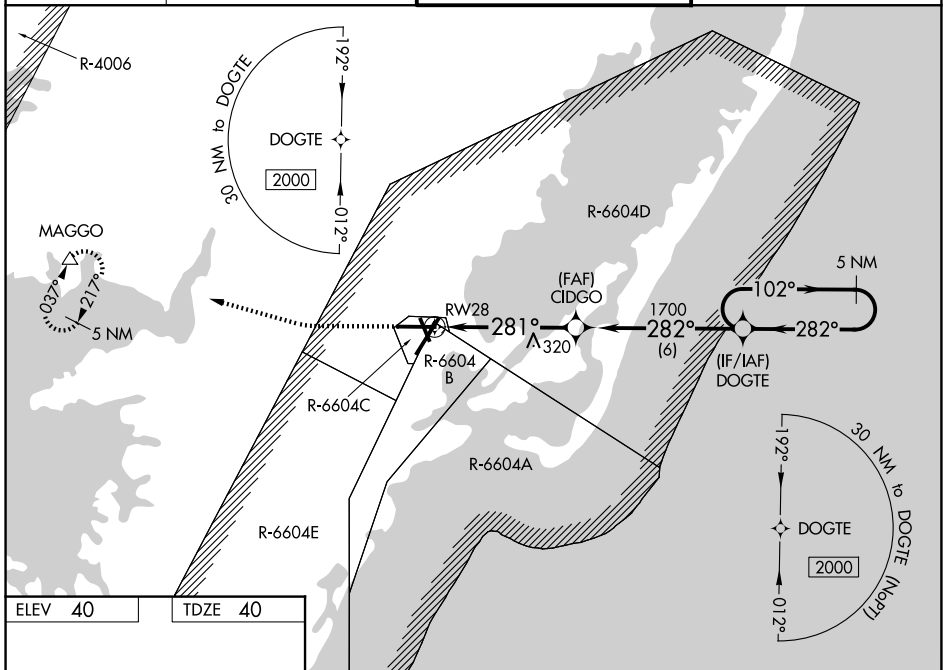
RNAV (GPS) RWY 28

WALLOPS FLIGHT FACILITY (WAL)

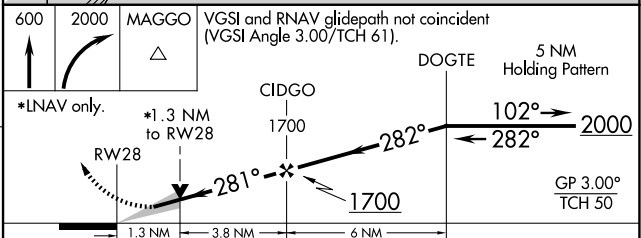
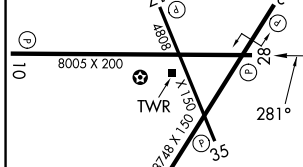
▼ For uncompensated Baro-VNAV systems, LNAV/VNAV NA below -11°C (13°F) or above 54°C (130°F). DME/DME RNP-0.3 NA. When local altimeter setting not received, use Salisbury altimeter setting: increase LPV DA to 343 and all Cats visibility ¼ mile; increase LNAV/VNAV DA to 453 and all Cats visibility ¼ mile; increase all MDA 60 feet and LNAV Cats C/D and Circling Cat C visibility ¼ mile. Baro-VNAV and VDP NA when using Salisbury altimeter setting.

MISSED APPROACH: Climb to 600 then climbing right turn to 2000 direct MAGGO and hold.

| | | | |
|------------------------|--|--|-----------------------------------|
| ASOS 119.175 | PATUXENT APP CON★ 127.95 314.0 | WALLOPS TOWER★ 126.5 (CTAF) 306.975 (CTAF) | GND CON 127.875 269.325 |
|------------------------|--|--|-----------------------------------|



| | |
|---------|---------|
| ELEV 40 | TDZE 40 |
|---------|---------|



| CATEGORY | A | B | C | D |
|--------------|-------|-------------|--------------|-------------------------------------|
| LPV DA | | 290-¾ | 250 (300-¾) | |
| LNAV/VNAV DA | | 400-1½ | 360 (400-1½) | |
| LNAV MDA | 520-1 | 480 (500-1) | 520-1¾ | 480 (500-1½) |
| CIRCLING | 600-1 | 560 (600-1) | 620-1½ | 860-2¾ 580 (600-1½) 820 (900-2¾) |

NE-3, 14 MAY 2026 to 11 JUN 2026

NE-3, 14 MAY 2026 to 11 JUN 2026