

LOC I-SRQ 109.7	APP CRS 319°	Rwy Ldg TDZE Apt Elev	7510 27 30
---------------------------	------------------------	-----------------------------	---------------------------------------

ILS or LOC RWY 32

SARASOTA/BRADENTON INTL (SRQ)

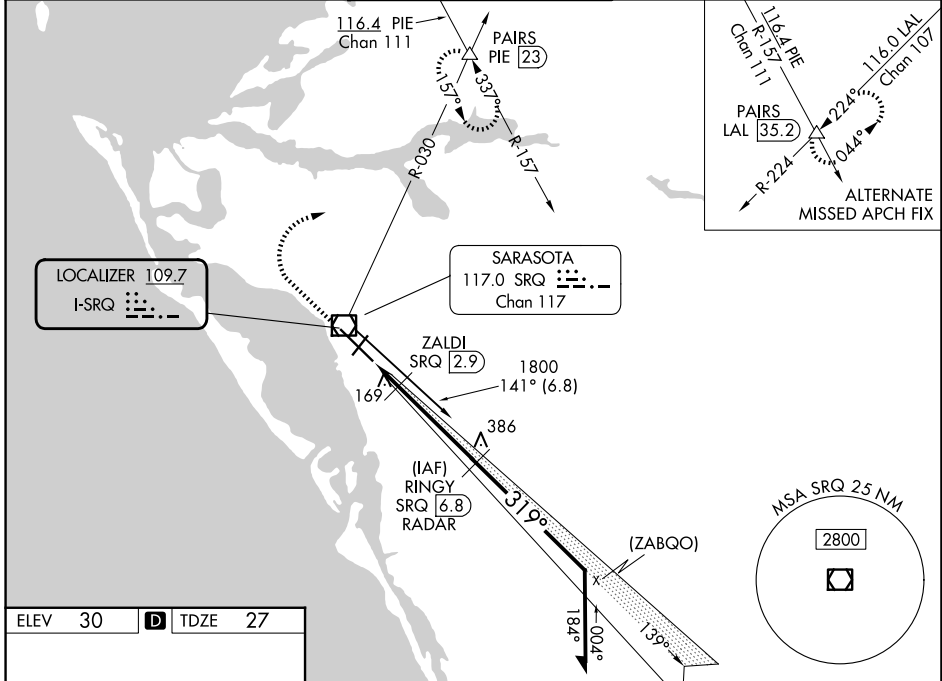
DME or RADAR required.

Autopilot coupled approach NA below 840. When control tower closed, S-ILS 32 Minimums NA, increase S-LOC 32 and ZALDI Fix Minimums S-LOC 32 all Cats visibility to 1. When control tower closed, inop table does not apply to S-LOC 32 and ZALDI Fix Minimums all Cats.

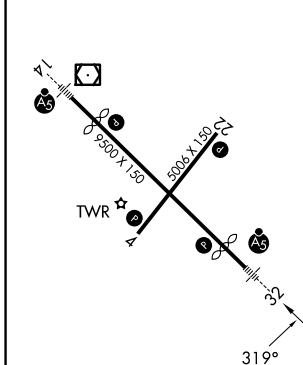
MALSR
AS

MISSED APPROACH: Climb to 1000 then climbing right turn to 3000 on heading 065° and SRQ VOR/DME R-030 to PAIRS INT/PIE VORTAC 23 DME and hold, continue climb-in-hold to 3000.

ATIS 124.375	TAMPA APP CON 119.65 353.575	SARASOTA TOWER ★ 120.1(CTAF) 256.8	GND CON 121.9 273.6	UNICOM 122.95
------------------------	--	--	-------------------------------	-------------------------



ELEV 30	D	TDZE 27
---------	----------	---------



REIL Rwy 22
HIRL Rwys 14-32 and 4-22

FAF to MAP 5.4 NM

Knots	60	90	120	150	180
Min:Sec	5:24	3:36	2:42	2:10	1:48

1000	3000	SRQ R-030	PAIRS	RINGY SRQ (6.8) RADAR	Remain within 10 NM
↑	hdg 065°		△		

*LOC only.

CATEGORY	A	B	C	D
S-ILS 32	227-1/2 200 (200-1/2)			
S-LOC 32	480-1/2	453 (500-1/2)	480-7/8	453 (500-7/8)
CIRCLING	500-1	470 (500-1)	600-1/2	600-2
			570 (600-1/2)	570 (600-2)
ZALDI FIX MINIMUMS				
S-LOC 32	360-1/2 333 (400-1/2)			
CIRCLING	500-1	470 (500-1)	600-1/2	600-2
			570 (600-1/2)	570 (600-2)