

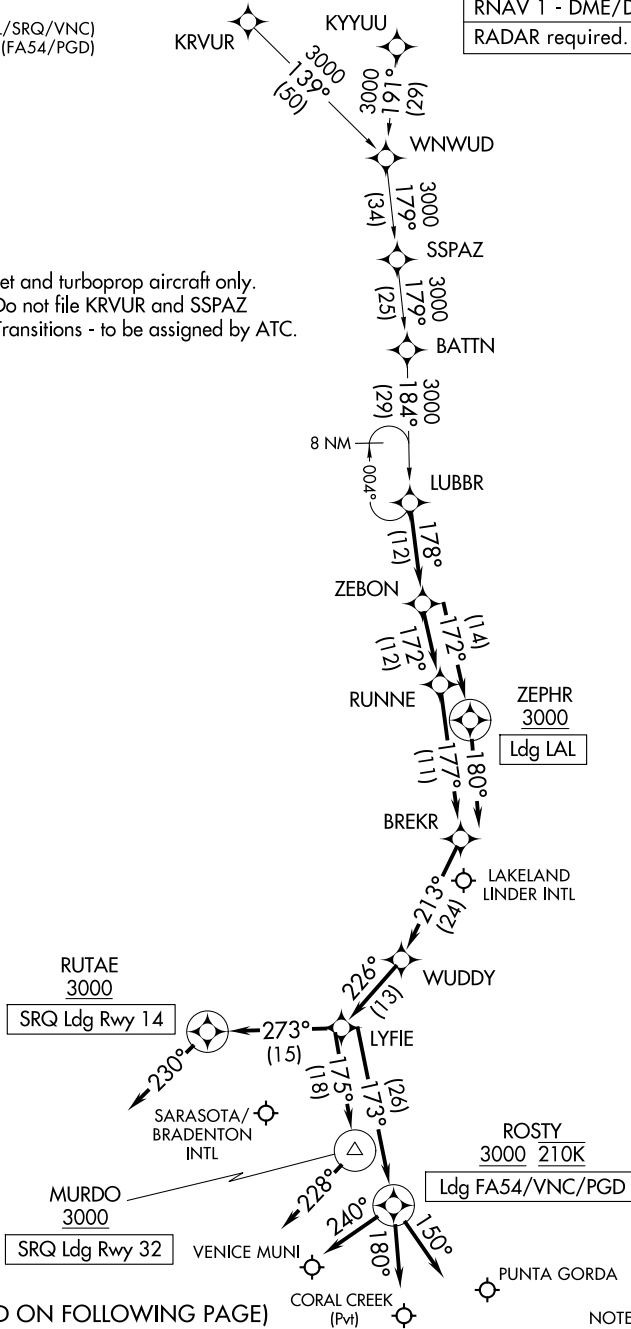
LUBBR FOUR ARRIVAL (RNAV)

SARASOTA/BRADENTON, FLORIDA

TAMPA APP CON
 135.5 279.6 (LAL/SRQ/VNC)
 119.65 353.575 (FA54/PGD)
 LAL ATIS
 118.025
 PGD ATIS
 135.675
 SRQ ATIS
 124.375

RNAV 1 - DME/DME/IRU or GPS. RADAR required.

NOTE: Jet and turboprop aircraft only.
 NOTE: Do not file KRVUR and SSPAZ
 Transitions - to be assigned by ATC.



SE-3, 14 MAY 2026 to 11 JUN 2026

SE-3, 14 MAY 2026 to 11 JUN 2026

(CONTINUED ON FOLLOWING PAGE)

NOTE: Chart not to scale.

LUBBR FOUR ARRIVAL (RNAV)

SARASOTA/BRADENTON, FLORIDA

ARRIVAL ROUTE DESCRIPTION

KRVUR TRANSITION (KRVUR.LUBBR4)

KYYUU TRANSITION (KYYUU.LUBBR4)

SSPAZ TRANSITION (SSPAZ.LUBBR4)

SRQ: From LUBBR on track 178° to ZEBON, then on track 172° to RUNNE, then on track 177° to BREKR.

LANDING SRQ RUNWAY 14: From BREKR on track 213° to WUDDY, then on track 226° to LYFIE, then on track 273° to cross RUTAE at or above 3000, then on heading 230°. Expect RADAR vectors to final approach course.

LANDING SRQ RUNWAY 32: From BREKR on track 213° to WUDDY, then on track 226° to LYFIE, then on track 175° to cross MURDO at or above 3000, then on heading 228°. Expect RADAR vectors to final approach course.

LANDING FA54: From LUBBR on track 178° to ZEBON, then on track 172° to RUNNE, then on track 177° to BREKR, then on track 213° to WUDDY, then on track 226° to LYFIE, then on track 173° to cross ROSTY at or above 3000 and at 210K, then on heading 180°. Expect RADAR vectors to final approach course.

LANDING LAL: From LUBBR on track 178° to ZEBON, then on track 172° to cross ZEPHR at or above 3000, then on track 180°. Expect RADAR vectors to final approach course.

LANDING PGD: From LUBBR on track 178° to ZEBON, then on track 172° to RUNNE, then on track 177° to BREKR, then on track 213° to WUDDY, then on track 226° to LYFIE, then on track 173° to cross ROSTY at or above 3000 and at 210K, then on heading 150°. Expect RADAR vectors to final approach course.

LANDING VNC: From LUBBR on track 178° to ZEBON, then on track 172° to RUNNE, then on track 177° to BREKR, then on track 213° to WUDDY, then on track 226° to LYFIE, then on track 173° to cross ROSTY at or above 3000 and at 210K, then on heading 240°. Expect RADAR vectors to final approach course.

SE-3, 14 MAY 2026 to 11 JUN 2026

SE-3, 14 MAY 2026 to 11 JUN 2026