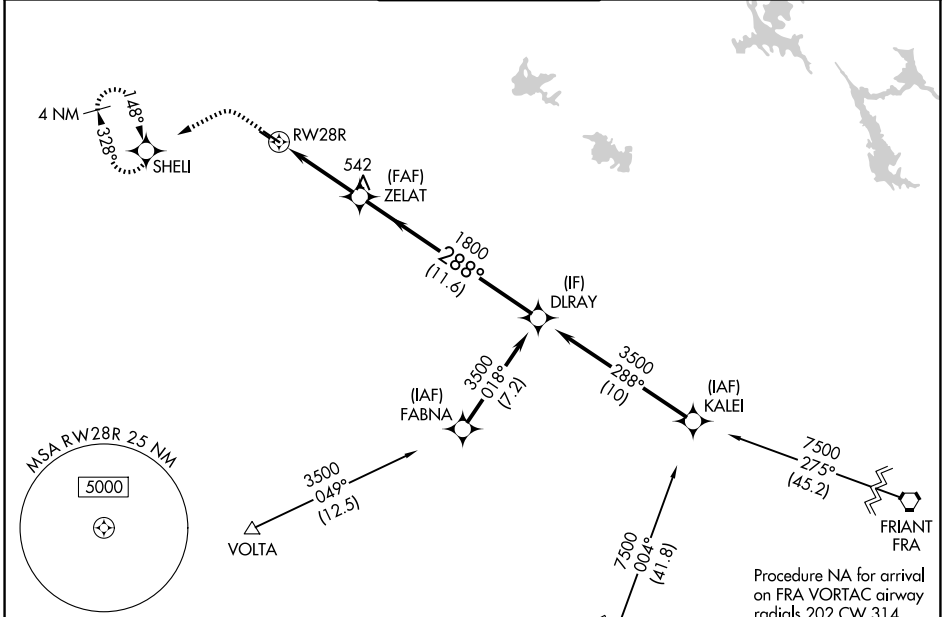


WAAS CH 70609 W28A	APP CRS 288°	Rwy Ldg TDZE Apt Elev	5904 91 99
--	------------------------	-----------------------------	---------------------------------------

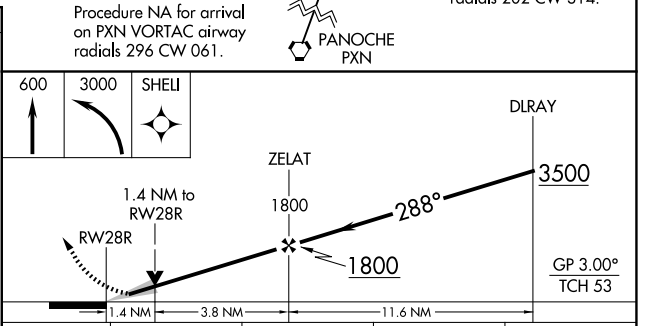
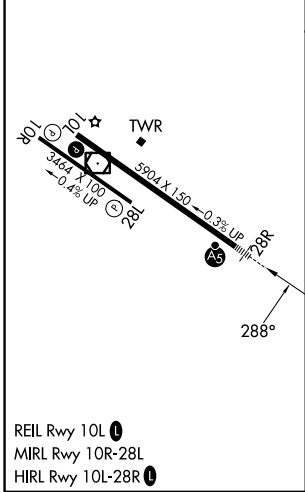
RNAV (GPS) RWY 28R

MODESTO CITY-COUNTY-HARRY SHAM FLD (MOD)

RNP APCH - GPS.		MALSR	MISSED APPROACH: Climb to 600 then climbing left turn to 3000 direct SHELI and hold, continue climb-in-hold to 3000.	
<p>⚠ Circling Rwy 10R, 28L NA at night. For uncompensated Baro-VNAV systems, LNAV/VNAV NA below -1°C or above 54°C.</p>				
ATIS 127.7	NORCAL APP CON 120.95 269.45	MODESTO TOWER* 125.3 (CTAF) 0 257.8	GND CON 121.7	UNICOM 122.95



ELEV 99	D TDZE 91
---------	------------------



CATEGORY	A	B	C	D
LPV DA		341- ¹ / ₂	250 (300- ¹ / ₂)	
LNAV/VNAV DA		526- ³ / ₄	435 (500- ³ / ₄)	
LNAV MDA	580- ¹ / ₂	489 (500- ¹ / ₂)	580-1	489 (500-1)
CIRCLING	580-1 481 (500-1)	600-1 501 (600-1)	640- ¹ / ₄ 541 (600- ¹ / ₄)	820-2 ¹ / ₂ 721 (800-2 ¹ / ₂)

SW-2, 14 MAY 2026 to 11 JUN 2026

SW-2, 14 MAY 2026 to 11 JUN 2026