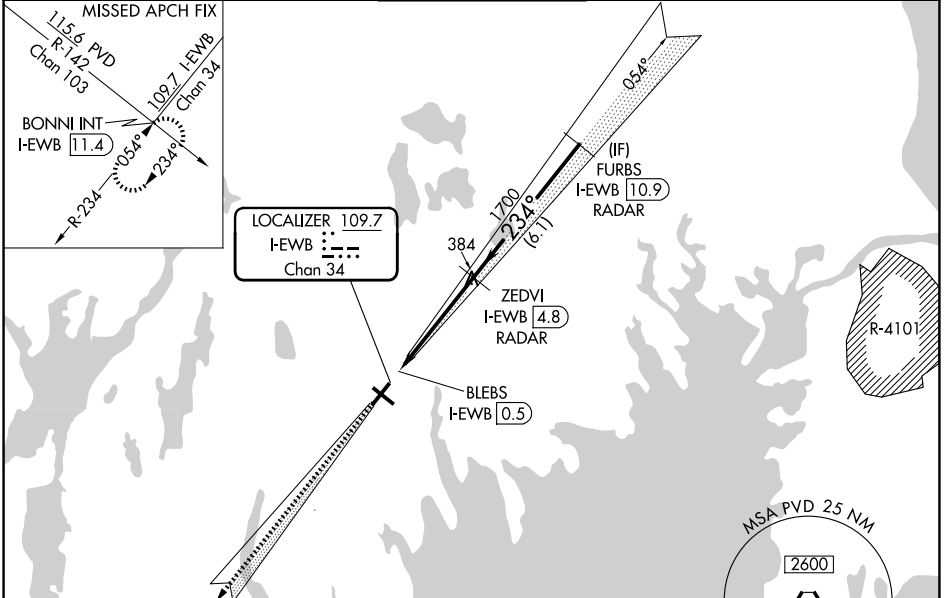


LOC/DME I-EWB 109.7 Chan 34	APP CRS 234°	Rwy Ldg TDZE Apt Elev	5000 78 79
------------------------------------------	------------------------	-----------------------------	---------------------------------------

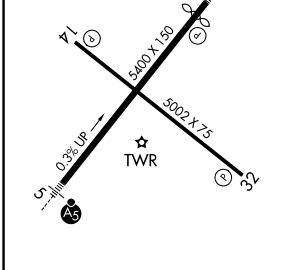
LOC BC RWY 23

NEW BEDFORD RGNL (EWB)

RADAR required for procedure entry.		MALSR	MISSED APPROACH: Climb to 2100 on I-EWB SW course to BONNI INT/I-EWB 1.4 DME and hold.	
<p>⚠ Circling Rwy 14 NA at night. Rwy 23 helicopter visibility reduction below 3/4 NA. For inop ALS, increase S-23 Cat A/B visibility to 1 SM and Cat C/D to 1 1/2 SM.</p>				
ATIS 126.85	PROVIDENCE APP CON* 128.7 269.525	NEW BEDFORD TOWER* 118.1 (CTAF) 0 239.0	GND CON 121.9	UNICOM 122.95



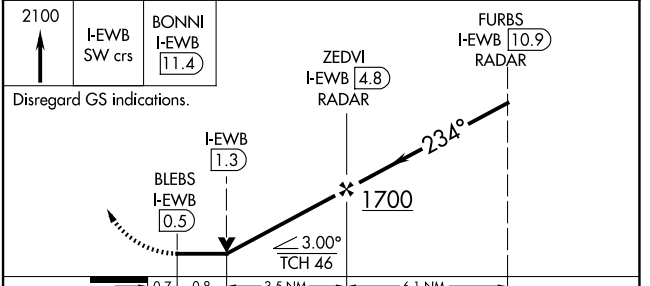
ELEV 79	TDZE 78
---------	---------



MIRL Rwy 14-32
HIRL Rwy 5-23
REL Rwy 32

FAF to MAP 4.3 NM

Knots	60	90	120	150	180
Min:Sec	4:18	2:52	2:09	1:43	1:26



CATEGORY	A	B	C	D
S-23	580-3/4	502 (600-3/4)	580-1	502 (600-1)
CIRCLING	620-1 541 (600-1)	640-1 561 (600-1)	720-1 3/4 641 (700-1 3/4)	960-3 881 (900-3)

NE-1, 14 MAY 2026 to 11 JUN 2026

NE-1, 14 MAY 2026 to 11 JUN 2026