

WAAS CH <b>62927</b> <b>W14A</b>	APP CRS <b>144°</b>	Rwy Ldg TDZE Apt Elev	<b>5002</b> <b>77</b> <b>79</b>
--	------------------------	-----------------------------	---------------------------------------

# RNAV (GPS) RWY 14

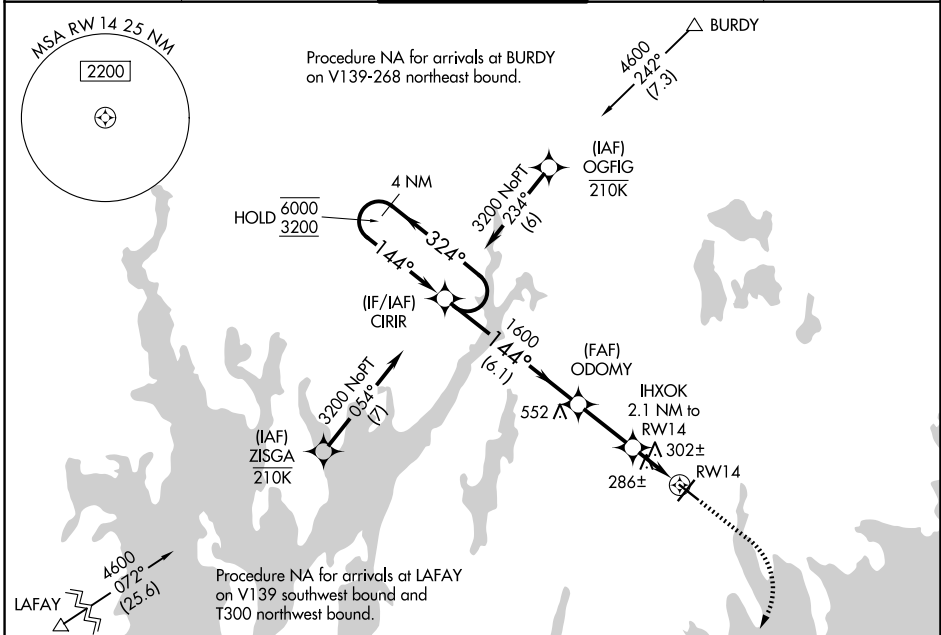
NEW BEDFORD RGNL (E/WB)

RNP APCH - GPS.

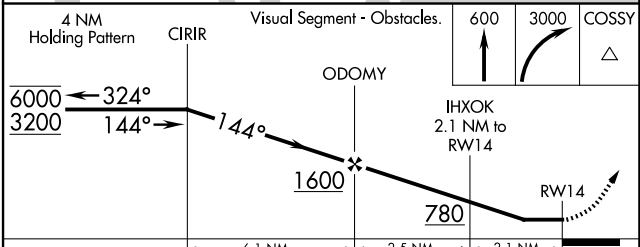
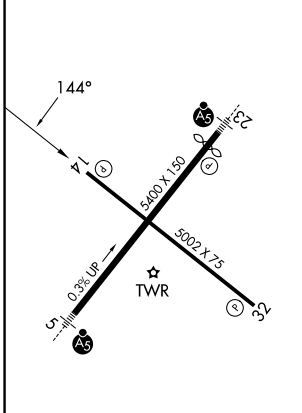
▼ Rwy 14 helicopter visibility reduction below 1 SM NA. Procedure NA at night. When local altimeter setting not received, use Taunton altimeter setting and increase all MDA 40 feet, and LNAV visibility Cat C ½ SM, and Circling visibility Cat C ½ SM.

▲ MISSED APPROACH: Climb to 600 then climbing right turn to 3000 direct COSSY and hold.

ATIS <b>126.85</b>	PROVIDENCE APP CON* <b>128.7 269.525</b>	NEW BEDFORD TOWER* <b>118.1 (CTAF) 0 239.0</b>	GND CON <b>121.9</b>	UNICOM <b>122.95</b>
-----------------------	---	---	-------------------------	-------------------------



ELEV 79	TDZE 77
---------	---------



CATEGORY	A	B	C	D
LP MDA	540-1	463 (500-1)	540-1 3/8 463 (500-1 3/8)	NA
LNAV MDA	560-1	483 (500-1)	560-1 3/8 483 (500-1 3/8)	NA
CIRCLING	620-1 541 (600-1)	640-1 561 (600-1)	720-1 3/4 641 (700-1 3/4)	NA

NEW BEDFORD, MASSACHUSETTS  
Orig-G 13JUN24

41°41'N-70°57'W

# RNAV (GPS) RWY 14

NE-1, 14 MAY 2026 to 11 JUN 2026

NE-1, 14 MAY 2026 to 11 JUN 2026