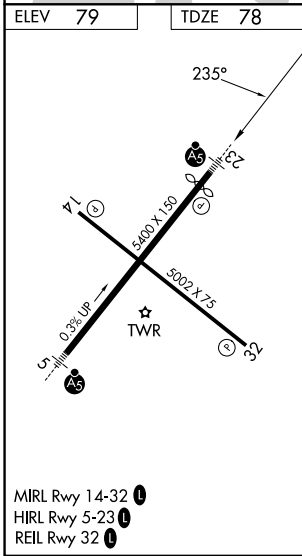
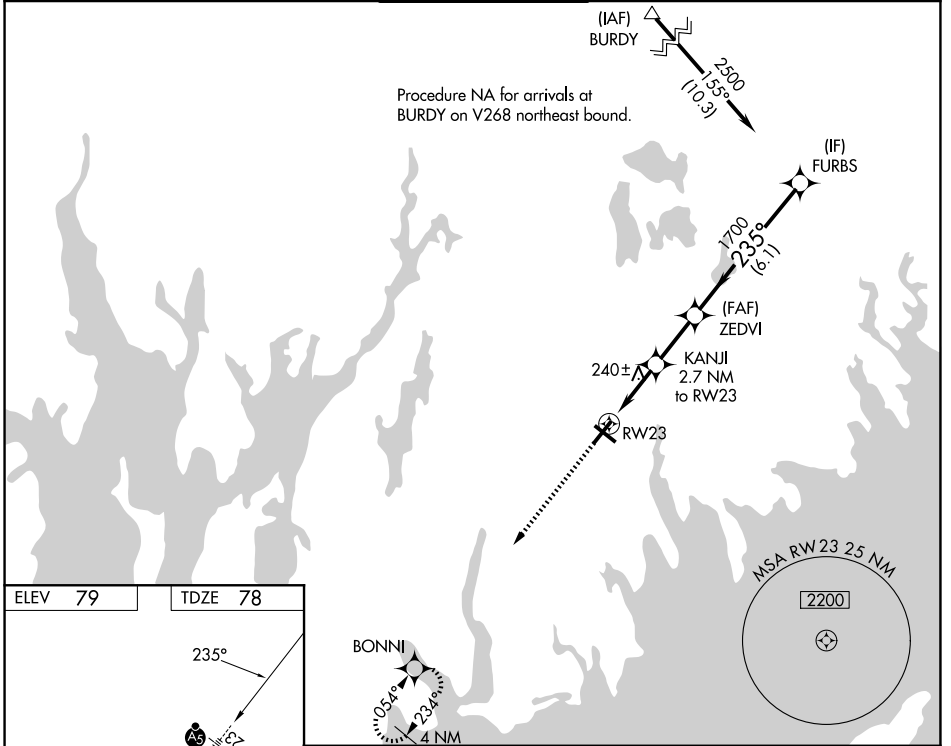


|  |                        |   |             |
|--|------------------------|---|-------------|
| WAAS<br>CH <b>65638</b><br><b>W23A</b> | APP CRS<br><b>235°</b> | Rwy Ldg<br>TDZE <b>78</b><br>Apt Elev <b>79</b> | <b>5000</b> |
|--|------------------------|---|-------------|

# RNAV (GPS) RWY 23

NEW BEDFORD RGNL (E/WB)

|  |   |   |  |                         |
|--|---|---|--|-------------------------|
| RNP APCH - GPS.  |   | MALSR<br>   | MISSED APPROACH:<br>Climb to 2100 direct BONNI and hold. |                         |
| For uncompensated Baro-VNAV systems, LNAV/VNAV NA below -15°C or above 54°C.<br>Rwy 23 helicopter visibility reduction below 3/4 SM NA. Circling Rwy 14 NA at night.<br>For inop ALS, increase LPV all Cats visibility 7/8 mile, increase LNAV/VNAV all Cats and LNAV Cat A/B visibility 1 SM. |   |   |  |                         |
| ATIS<br><b>126.85</b>  | PROVIDENCE APP CON*<br><b>128.7 269.525</b> | NEW BEDFORD TOWER*<br><b>118.1 (CTAF) 0 239.0</b> | GND CON<br><b>121.9</b>                                  | UNICOM<br><b>122.95</b> |



|              |                      |                           |                              |                      |      |
|--------------|----------------------|---------------------------|------------------------------|----------------------|------|
| ELEV 79      | TDZE 78              |                           |                              |                      |      |
|              |                      |                           |                              |                      |      |
| 2100         | BONNI                | KANJI<br>2.7 NM to RWY 23 | ZEDVI<br>1700                | FURBS                | 2500 |
|              | 1.2 NM to RWY 23     | 1.5 NM                    | 2.3 NM                       | 6.1 NM               |      |
|              | 1.2                  | 1.5                       | 2.3                          | 6.1                  |      |
| CATEGORY     | A                    | B                         | C                            | D                    |      |
| LPV DA       |                      | 359-3/4                   | 281 (300-3/4)                |                      |      |
| LNAV/VNAV DA |                      | 453-3/4                   | 375 (400-3/4)                |                      |      |
| LNAV MDA     |                      | 500-3/4                   | 422 (500-3/4)                |                      |      |
| CIRCLING     | 620-1<br>541 (600-1) | 640-1<br>561 (600-1)      | 720-1 3/4<br>641 (700-1 3/4) | 960-3<br>881 (900-3) |      |

NE-1, 14 MAY 2026 to 11 JUN 2026

NE-1, 14 MAY 2026 to 11 JUN 2026