


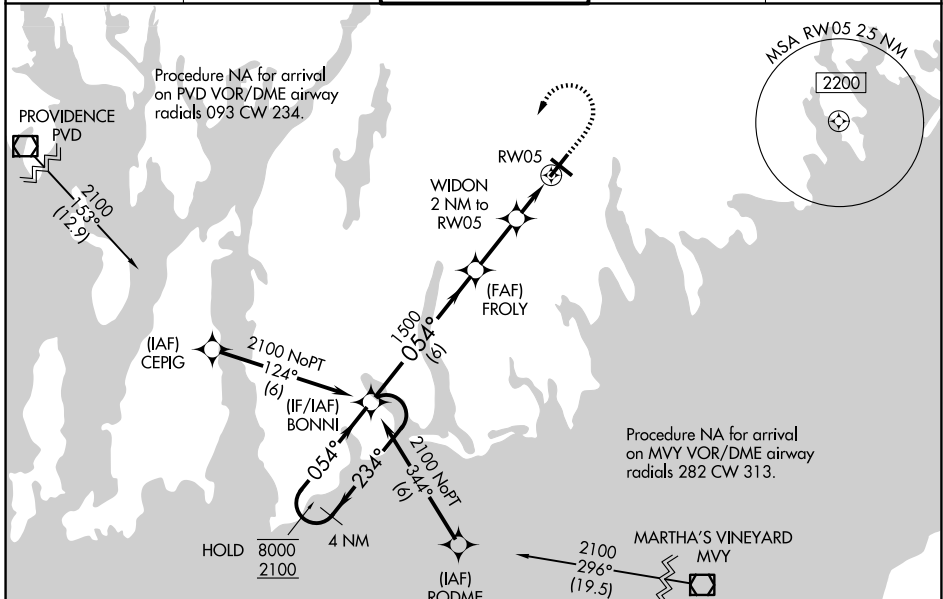
WAAS CH 60938 W05A	APP CRS 054°	Rwy Ldg TDZE 70 Apt Elev 79	5400
--	------------------------	---	-------------

RNAV (GPS) RWY 5

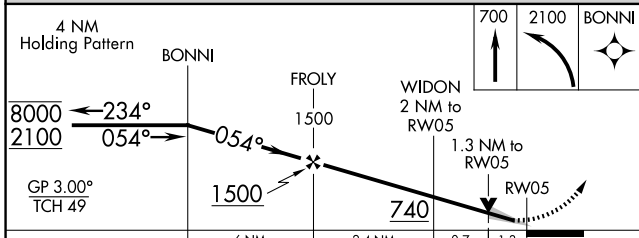
NEW BEDFORD RGNL (E/WB)

RNP APCH - GPS.	<p>⚠ For uncompensated Baro-VNAV systems, LNAV/VNAV NA below -13°C or above 54°C. Circling Rwy 14 NA at night. For inop ALS, increase LNAV/ VNAV all Cats and LNAV Cat C/D visibility to 1½ SM.</p>	<p>MALSR </p>	<p>MISSED APPROACH: (Do not exceed 235K until BONNI) climb to 700 then climbing left turn to 2100 direct BONNI and hold.</p>
-----------------	--	--	--

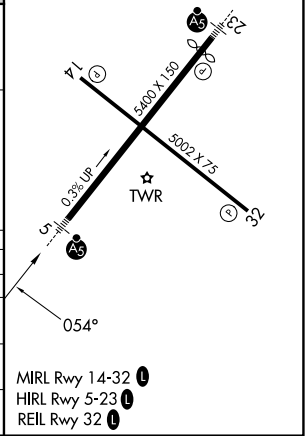
ATIS 126.85	PROVIDENCE APP CON* 128.7 269.525	NEW BEDFORD TOWER* 118.1 (CTAF) 239.0	GND CON 121.9	UNICOM 122.95
-----------------------	---	---	-------------------------	-------------------------



ELEV 79	TDZE 70
---------	---------



CATEGORY	A	B	C	D
LPV DA	285/24		215 (300-½)	
LNAV/VNAV DA	540/50		470 (500-1)	
LNAV MDA	540/24	470 (500-½)	540/50	470 (500-1)
CIRCLING	620-1 541 (600-1)	640-1 561 (600-1)	720-1¾ 641 (700-1¾)	960-3 881 (900-3)



NE-1, 14 MAY 2026 to 11 JUN 2026

NE-1, 14 MAY 2026 to 11 JUN 2026