

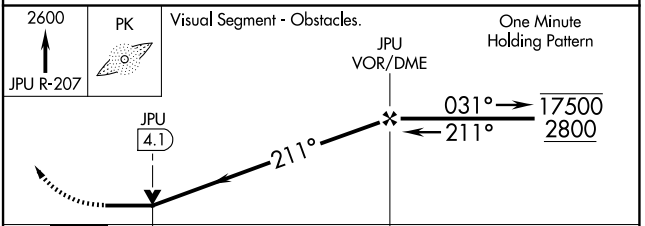
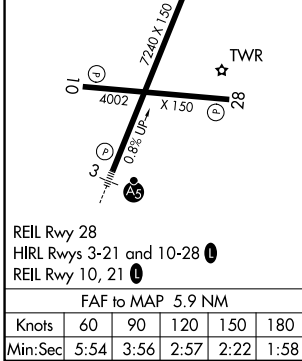
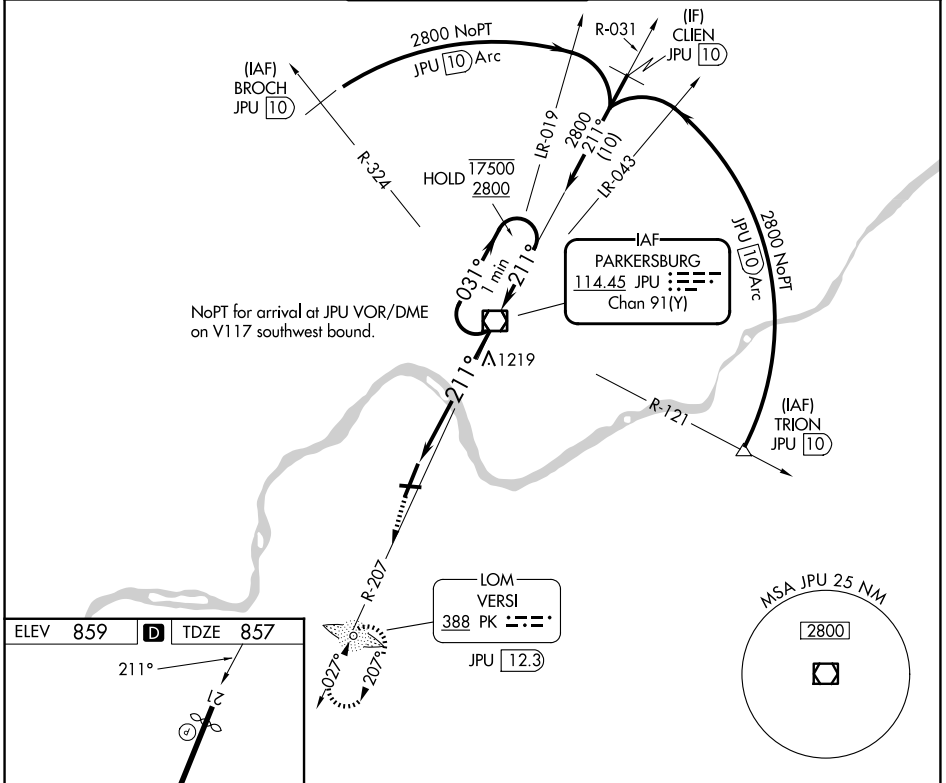
VOR/DME JPU <b>114.45</b> Chan <b>91</b> (Y)	APP CRS <b>211°</b>	Rwy Ldg <b>6780</b> TDZE <b>857</b> Apt Elev <b>859</b>
--	------------------------	---

# VOR RWY 21

MID-OHIO VALLEY RGNL (PKB)

ADF or DME required.		<p><b>▽</b> VDP NA when using UNI altimeter setting. Rwy 21 helicopter visibility reduction below 3/4 SM NA. Circling Rwy 10, 28 NA at night. When local altimeter setting not received, use UNI altimeter setting and increase all MDAs 100 feet and S-21 visibility Cat C and D 1/2 SM, and Circling visibility Cat C and D 1/2 SM.</p> <p><b>▲</b> NA</p>		<p>MISSED APPROACH: Climb to 2600 on JPU VOR/DME R-207 to VERSI LOM/JPU 12.3 DME and hold.</p>	
----------------------	--	--	--	--	--

ATIS <b>124.35</b>	INDIANAPOLIS CENTER <b>125.55 317.475</b>	PARKERSBURG TOWER* <b>123.7</b> (CTAF) <b>257.8</b>	GND CON <b>126.45</b>	UNICOM <b>122.95</b>
-----------------------	--	--	--------------------------	-------------------------



CATEGORY	A	B	C	D
S-21	1480-1	623 (700-1)	1480-1 3/4	623 (700-1 3/4)
CIRCLING	1480-1	621 (700-1)	1640-2 1/4 781 (800-2 1/4)	1640-2 1/2 781 (800-2 1/2)

NE-4, 14 MAY 2026 to 11 JUN 2026

NE-4, 14 MAY 2026 to 11 JUN 2026