

WAAS CH <b>81915</b> <b>W23A</b>	APP CRS <b>231°</b>	Rwy Ldg <b>5395</b> TDZE <b>721</b> Apt Elev <b>721</b>
--	------------------------	---

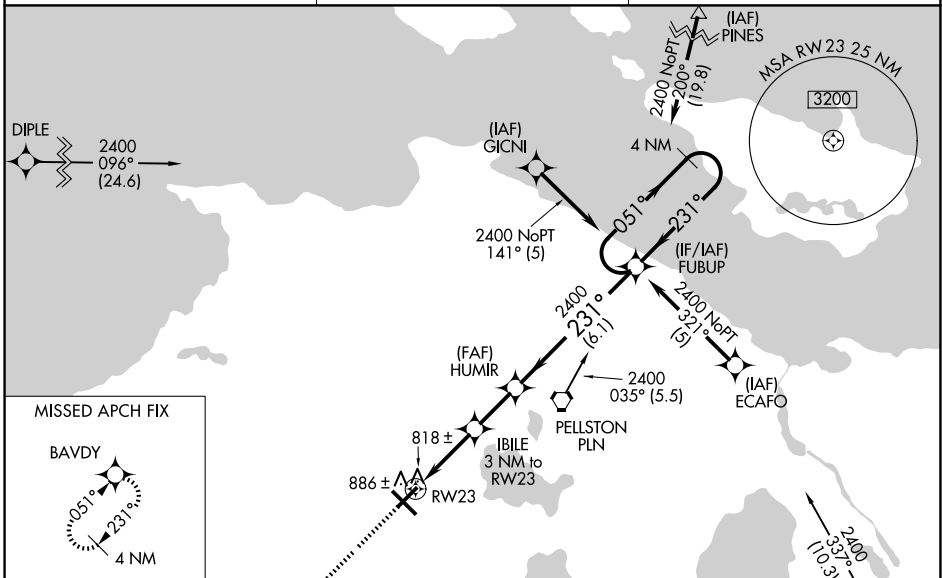
# RNAV (GPS) RWY 23

PELLSTON RGNL/EMMET COUNTY (PLN)

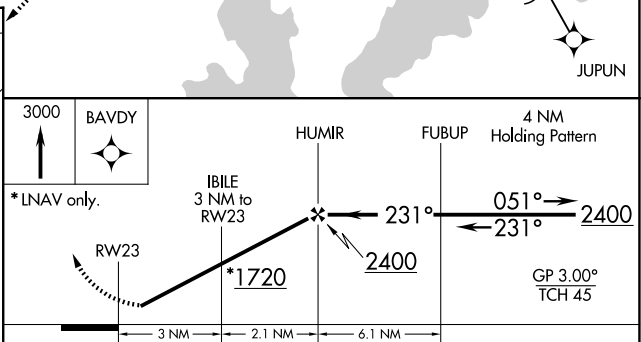
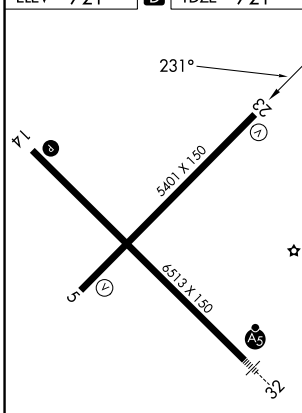
**⚠** Baro-VNAV NA when using Harbor Springs altimeter setting. For uncompensated Baro-VNAV systems, LNAV/VNAV NA below -16°C (4°F) or above 47°C (116°F). DME/DME RNP-0.3 NA. Rwy 23 helicopter visibility reduction below 3/4 SM NA. When local altimeter setting not received, use Harbor Springs altimeter setting; increase LPV DA to 1087 feet, LNAV/VNAV DA to 1139 feet and all visibilities 1/2 SM; increase all MDA 40 feet. Circling Rwy 5, 14, 23 NA at night.

**MISSED APPROACH:**  
Climb to 3000 direct  
BAVDY and hold.

ASOS <b>119.025</b>	MINNEAPOLIS CENTER <b>134.6 354.05</b>	UNICOM <b>123.0 (CTAF) 0</b>
------------------------	---	---------------------------------



ELEV 721	<b>D</b>	TDZE 721
----------	----------	----------



CATEGORY	A	B	C	D
LPV DA		1057-1¼	336 (400-1¼)	
LNAV/VNAV DA		1109-1¼	388 (400-1¼)	
LNAV MDA	1240-1	519 (600-1)	1240-1½ 519 (600-1½)	1240-1¾ 519 (600-1¾)
CIRCLING	1280-1 559 (600-1)	1320-1 599 (600-1)	1560-2½ 839 (900-2½)	1660-3 939 (1000-3)

HIRL Rwy 14-32 **0**  
MIRL Rwy 5-23 **0**  
REIL Rwy 5, 14, and 23 **0**

EC-1, 14 MAY 2026 to 11 JUN 2026

EC-1, 14 MAY 2026 to 11 JUN 2026