

WAAS CH <b>69211</b> <b>W14A</b>	APP CRS <b>143°</b>	Rwy Ldg TDZE Apt Elev	<b>6400</b> <b>668</b> <b>668</b>
--	------------------------	-----------------------------	---

# RNAV (GPS) RWY 14

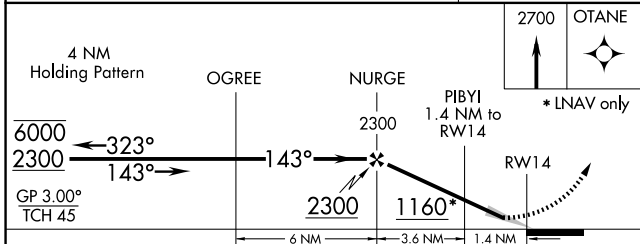
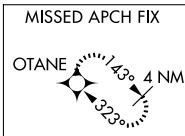
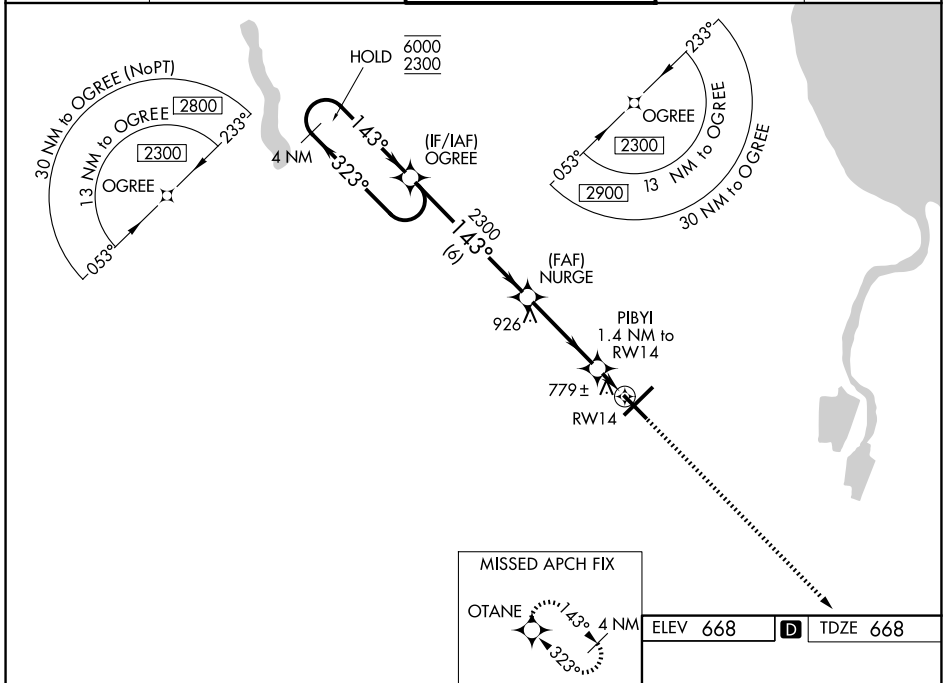
MBS INTL (MBS)

RNP APCH.

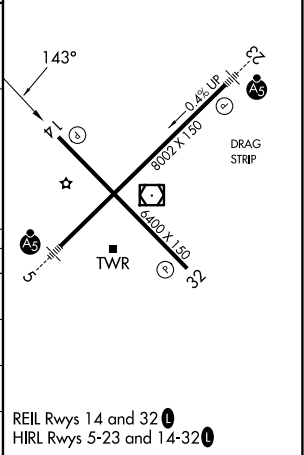
**▽** For uncompensated Baro-VNAV systems, LNAV/VNAV NA below -18°C or above 54°C.

MISSED APPROACH: Climb to 2700 direct OTANE and hold.

ATIS <b>125.925</b>	GREAT LAKES APP CON* <b>126.45 235.625</b>	SAGINAW TOWER* <b>120.1 (CTAF) 257.7</b>	GND CON <b>121.7</b>	UNICOM <b>122.95</b>
------------------------	---	---	-------------------------	-------------------------



CATEGORY	A	B	C	D
LPV DA		868- <sup>3</sup> / <sub>4</sub>	200 (200- <sup>3</sup> / <sub>4</sub> )	
LNAV/VNAV DA		960- <sup>7</sup> / <sub>8</sub>	292 (300- <sup>7</sup> / <sub>8</sub> )	
LNAV MDA		1040-1	372 (400-1)	
CIRCLING	1080-1 412 (500-1)	1120-1 452 (500-1)	1240-1 <sup>1</sup> / <sub>2</sub> 572 (600-1 <sup>1</sup> / <sub>2</sub> )	1240-2 572 (600-2)



EC-1, 14 MAY 2026 to 11 JUN 2026

EC-1, 14 MAY 2026 to 11 JUN 2026

REIL Rwy 14 and 32  
HIRL Rwy 5-23 and 14-32