

WAAS CH 82010 W05A	APP CRS 053°	Rwy Ldg TDZE Apt Elev	8002 666 668
--	------------------------	-----------------------------	---

RNAV (GPS) RWY 5

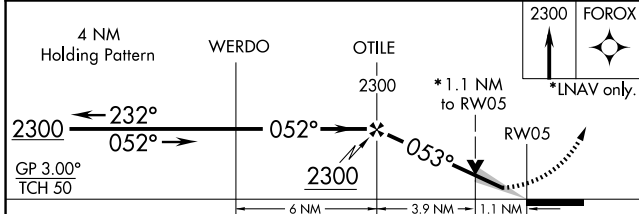
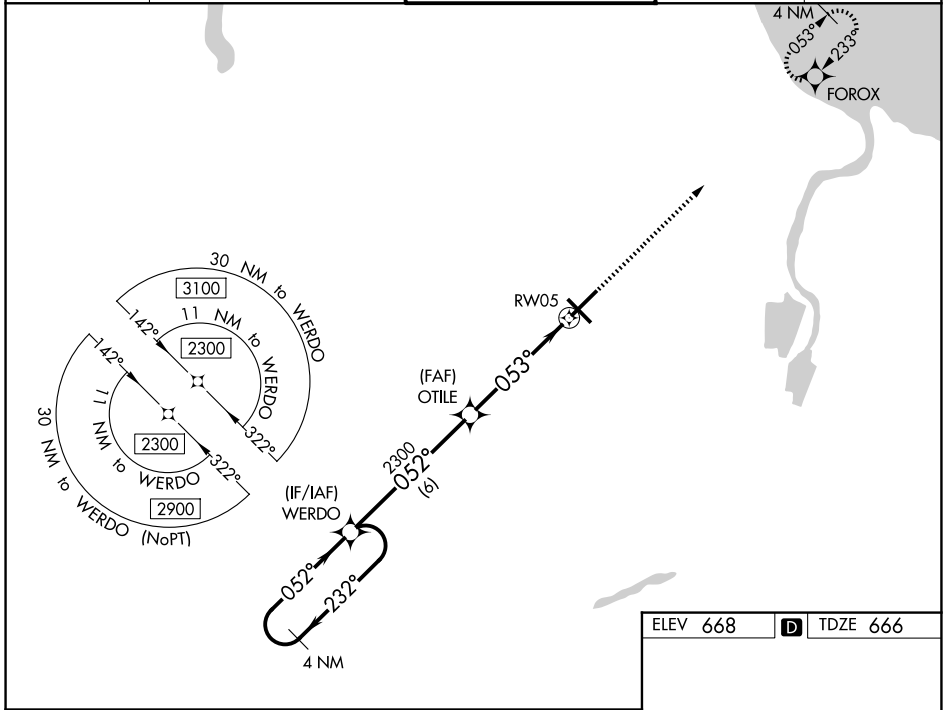
MBS INTL (MBS)

▽ For uncompensated Baro-VNAV systems, LNAV/VNAV NA below -18°C (0°F) or above 54°C (130°F). DME/DME RNP-0.3 NA. For inoperative ALS, increase LNAV/VNAV all Cats visibility to RVR 4500 and LNAV Cats C/D visibility to RVR 6000.
** RVR 1800 authorized with use of FD or AP or HUD to DA.

MALSR

MISSED APPROACH:
Climb to 2300 direct FOROX and hold.

ATIS 125.925	GREAT LAKES APP CON* 126.45 235.625	SAGINAW TOWER* 120.1 (CTAF) 0 257.7	GND CON 121.7	UNICOM 122.95
-------------------------------	--	--	--------------------------------	--------------------------------



ELEV 668 **D** TDZE 666

The diagram shows the RWY 5 layout. The runway is 8002 x 150 feet. The approach path starts at a 053° heading, 1.1 NM from the runway. A 4 NM holding pattern is shown for FOROX with altitudes of 2300 and 3100 feet. Distances to FOROX are 11 NM and 30 NM. The diagram also shows a 4 NM holding pattern for WERDO with altitudes of 2900, 2300, and 3100 feet. Distances to WERDO are 11 NM and 30 NM. The diagram also shows a 4 NM holding pattern for WERDO (NoPT) with altitudes of 2900 and 2300 feet.

CATEGORY	A	B	C	D
LPV DA**		866/24	200 (200-½)	
LNAV/ VNAV DA		955/24	289 (300-½)	
LNAV MDA	1080/24	414 (500-½)	1080/40	414 (500-¾)
CIRCLING	1080-1 412 (500-1)	1120-1 452 (500-1)	1240-1½ 572 (600-1½)	1240-2 572 (600-2)

REIL Rwy 14 and 32 **1**
HIRL Rwy 5-23 and 14-32 **1**

EC-1, 14 MAY 2026 to 11 JUN 2026

EC-1, 14 MAY 2026 to 11 JUN 2026