

VOR/DME MBS 114.35 Chan 90 (Y)	APP CRS 131°	Rwy Ldg TDZE 6400 668 Apt Elev 668
--	------------------------	--

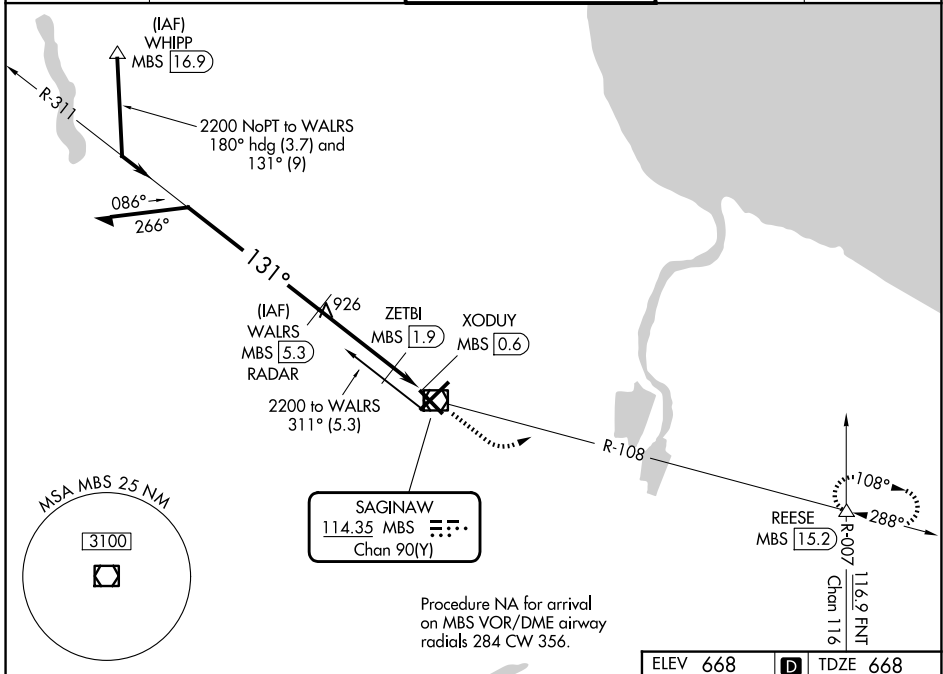
VOR RWY 14

MBS INTL (MBS)

DME or RADAR required.

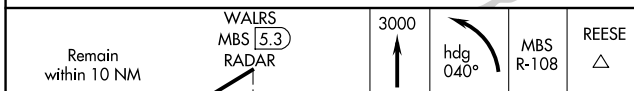
MISSED APPROACH: Climb to 3000 then left turn on heading 040° and MBS R-108 to REESE INT/15.2 DME and hold.

ATIS 125.925	GREAT LAKES APP CON★ 126.45 235.625	SAGINAW TOWER★ 120.1 (CTAF) 257.7	GND CON 121.7	UNICOM 122.95
------------------------	---	---	-------------------------	-------------------------

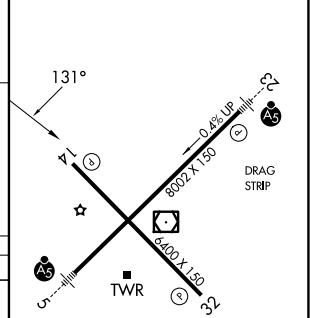
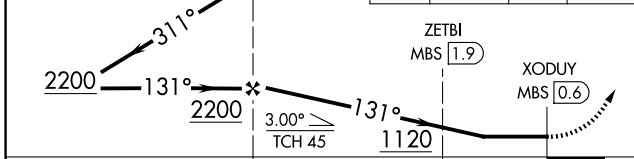


EC-1, 14 MAY 2026 to 11 JUN 2026

EC-1, 14 MAY 2026 to 11 JUN 2026



ELEV 668	D	TDZE 668
----------	---	----------



CATEGORY	A	B	C	D
S-14	1120-1	452 (500-1)	1120-1 $\frac{3}{8}$	452 (500-1 $\frac{3}{8}$)
CIRCLING	1120-1	452 (500-1)	1240-1 $\frac{1}{2}$ 572 (600-1 $\frac{1}{2}$)	1240-2 572 (600-2)
ZETBI FIX MINIMUMS (DME REQUIRED)				
S-14	1040-1	372 (400-1)	1040-1 $\frac{3}{8}$	372 (400-1 $\frac{3}{8}$)
CIRCLING	1080-1 412 (500-1)	1120-1 452 (500-1)	1240-1 $\frac{1}{2}$ 572 (600-1 $\frac{1}{2}$)	1240-2 572 (600-2)

REIL Rwy 14 and 32
HIRL Rwy 5-23 and 14-32