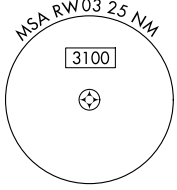
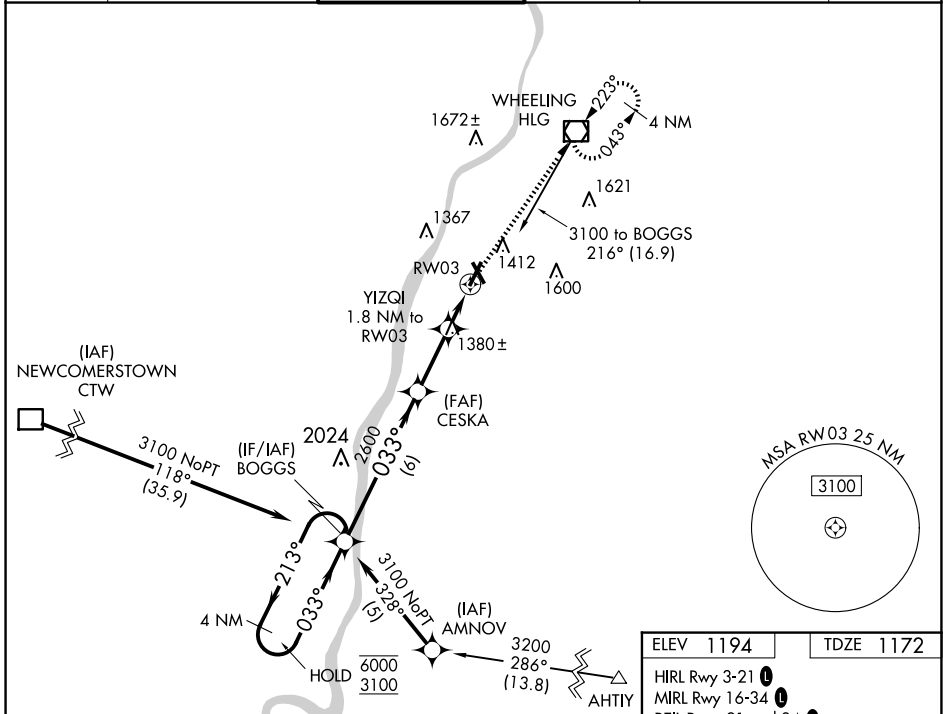


| | | | |
|--|------------------------|---|-------------|
| WAAS CH 90513 W03A | APP CRS 033° | Rwy Idg TDZE 1172 Apt Elev 1194 | 5002 |
|--|------------------------|---|-------------|

RNAV (GPS) RWY 3

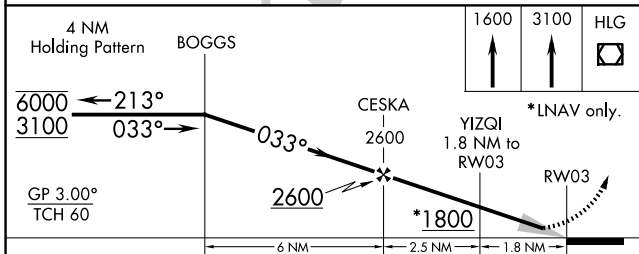
WHEELING OHIO COUNTY (HLG)

| | | | | | | |
|--|--|--|--|--|---|-------------------------|
| RNP APCH. | | WHEELING TOWER * 118.1 (CTAF) 0257.8 | | GND CON 121.75 | CLNC DEL 125.275 (when twr closed) | UNICOM 122.95 |
| <p>▼ Inoperative table does not apply to LPV and LNAV/VNAV all Cats and LNAV Cats A/B. For uncompensated Baro-VNAV systems, LNAV/VNAV NA below -17°C or above 54°C.</p> <p>▲</p> | | <p>MAISF</p> | | <p>MISSED APPROACH: Climb 1600 then climb to 3100 direct HLG VOR/DME and hold, continue climb-in-hold to 3100.</p> | | |

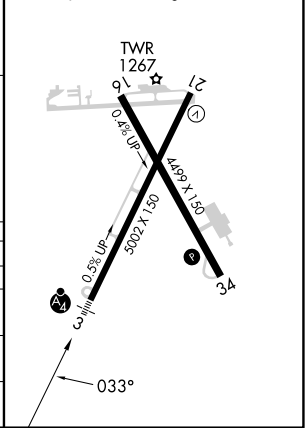


| | |
|-----------|-----------|
| ELEV 1194 | TDZE 1172 |
|-----------|-----------|

HIRL Rwy 3-21
MIRL Rwy 16-34
REIL Rwy 21 and 34



| CATEGORY | A | B | C | D |
|--------------|-----------------------|-----------------------|-----------------------|-------------------------|
| LPV DA | | 1372/50 | 200 (200-1) | |
| LNAV/VNAV DA | | 1439/50 | 267 (300-1) | |
| LNAV MDA | 1640/55 | 468 (500-1) | 1640/60 | 468 (500-1½) |
| CIRCLING | 1720-1 526 (600-1) | 1740-1 546 (600-1) | 1920-2 726 (800-2) | 1920-2¼ 726 (800-2¼) |



NE-4, 14 MAY 2026 to 11 JUN 2026

NE-4, 14 MAY 2026 to 11 JUN 2026