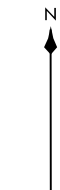


PROP ONE DEPARTURE  
(PROP1.PROP) 22JUN17

- NOTE: RADAR required.
- NOTE: BIGGY departures expect vectors to SBJ/SBJ R-237.
- NOTE: COATE departures expect vectors to SAX VORTAC or SAX R-311.
- NOTE: ELIOT departures expect vectors to SAX R-252.
- NOTE: GAYEL departures expect vectors to DPK R-320.
- NOTE: LANNA departures expect vectors to PTW R-059.
- NOTE: MERIT departures expect vectors to LGA R-055.
- NOTE: NEION departures expect vectors to LGA R-322.
- NOTE: PARKE departures expect vectors to BWZ/BWZ R-250.
- NOTE: WHITE departures expect vectors to COL VOR/DME or COL R-204.
- NOTE: DIXIE departures expect vectors to JFK VOR/DME.
- NOTE: HAAYS departures expect vectors to HUO R-145.
- NOTE: BAYYS departures expect vectors to BDR VOR/DME or BDR R-054.



**TOP ALTITUDE:  
3000**

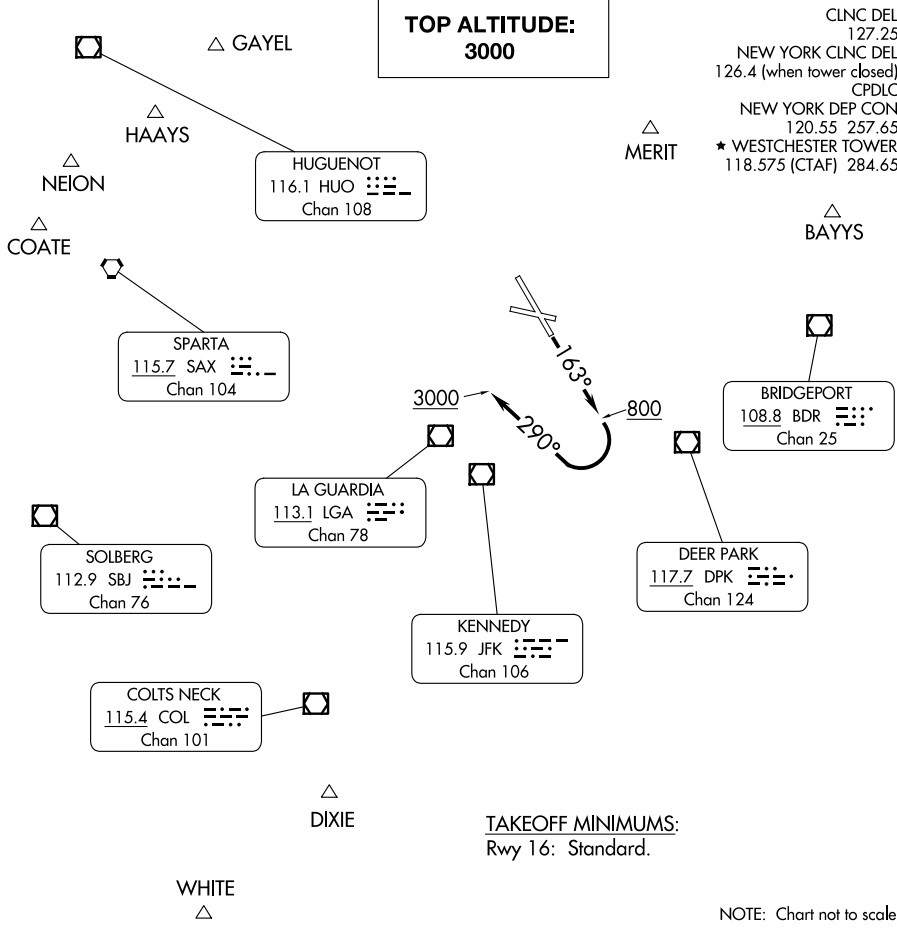
CLNC DEL  
127.25  
NEW YORK CLNC DEL  
126.4 (when tower closed)  
CPDLC  
NEW YORK DEP CON  
120.55 257.65  
★ WESTCHESTER TOWER  
118.575 (CTAF) 284.65

(PROP1.PROP) 23334  
PROP ONE DEPARTURE

AL-651 (FAA)

WESTCHESTER COUNTY (HPN)  
WHITE PLAINS, NEW YORK

WHITE PLAINS, NEW YORK  
WESTCHESTER COUNTY (HPN)



NOTE: Chart not to scale.

# PROP ONE DEPARTURE

WHITE PLAINS, NEW YORK



## DEPARTURE ROUTE DESCRIPTION

\*TAKEOFF RUNWAY 16: Climb heading 163° to 800, then climbing right turn to 3000 on heading 290°, thence. . . .

. . . . on vectors to assigned route/fix. Maintain 3000. Expect clearance to filed altitude within 10 minutes after departure.

\* NOTE: Do not exceed 190K until established on heading 290°.

NE-2, 14 MAY 2026 to 11 JUN 2026

NE-2, 14 MAY 2026 to 11 JUN 2026