

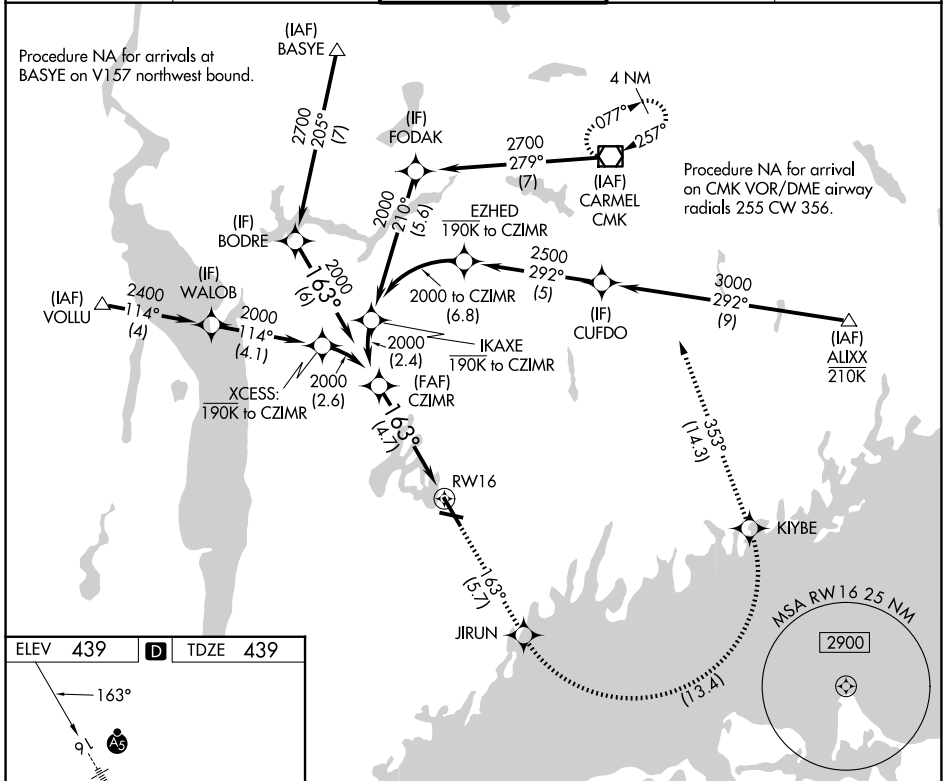
APP CRS	Rwy Ldg	<b>6549</b>
<b>163°</b>	TDZE	<b>439</b>
	Apt Elev	<b>439</b>

# RNAV (RNP) Z RWY 16

WESTCHESTER COUNTY (HPN)

RNP AR APCH - GPS.	MALSR	MISSED APPROACH: Climb to 3000 on track 163° to JIRUN, left turn to KIYBE, then track 353° to CMK VOR/DME and hold.
▼ For uncompensated Baro-VNAV systems, procedure NA below -14°C or above 54°C.		

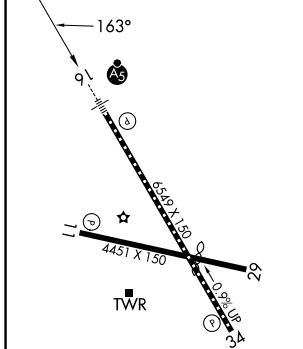
D-ATIS <b>133.8</b>	NEW YORK APP CON <b>120.8 126.4 257.65</b>	WESTCHESTER TOWER ★ <b>118.575 (CTAF) 0 284.65</b>	GND CON <b>121.825</b>	UNICOM <b>122.95</b>
------------------------	---	---	---------------------------	-------------------------



NE-2, 14 MAY 2026 to 11 JUN 2026

NE-2, 14 MAY 2026 to 11 JUN 2026

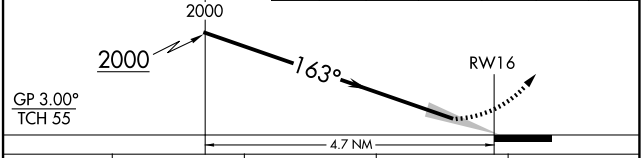
ELEV 439	<b>D</b>	TDZE 439
----------	----------	----------



- REIL Rwy 11 and 34
- HIRL Rwy 16-34
- MIRL Rwy 11-29
- TDZ/CL Rwy 16

See planview for multiple IF locations.

3000	↑	tr 163°	JIRUN	↙	KIYBE	tr 353°	CMK
------	---	---------	-------	---	-------	---------	-----



CATEGORY	A	B	C	D
RNP 0.15 DA		826/35	387 (400-5/8)	
RNP 0.30 DA		950/55	511 (600-1)	

**AUTHORIZATION REQUIRED**