

WAAS CH <b>61022</b> <b>W23A</b>	APP CRS <b>233°</b>	Rwy Ldg TDZE Apt Elev	<b>5001</b> <b>144</b> <b>148</b>
--	------------------------	-----------------------------	---

# RNAV (GPS) RWY 23

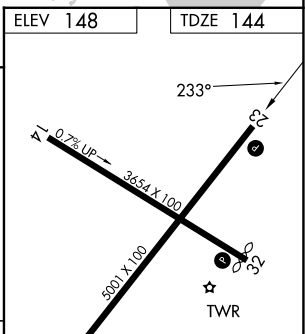
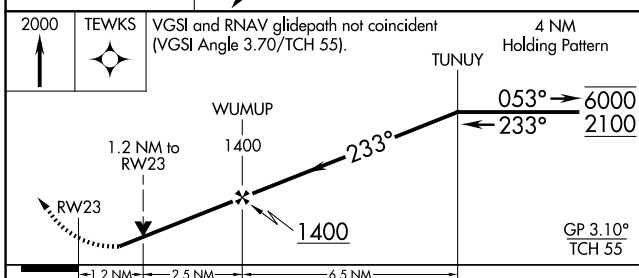
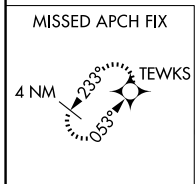
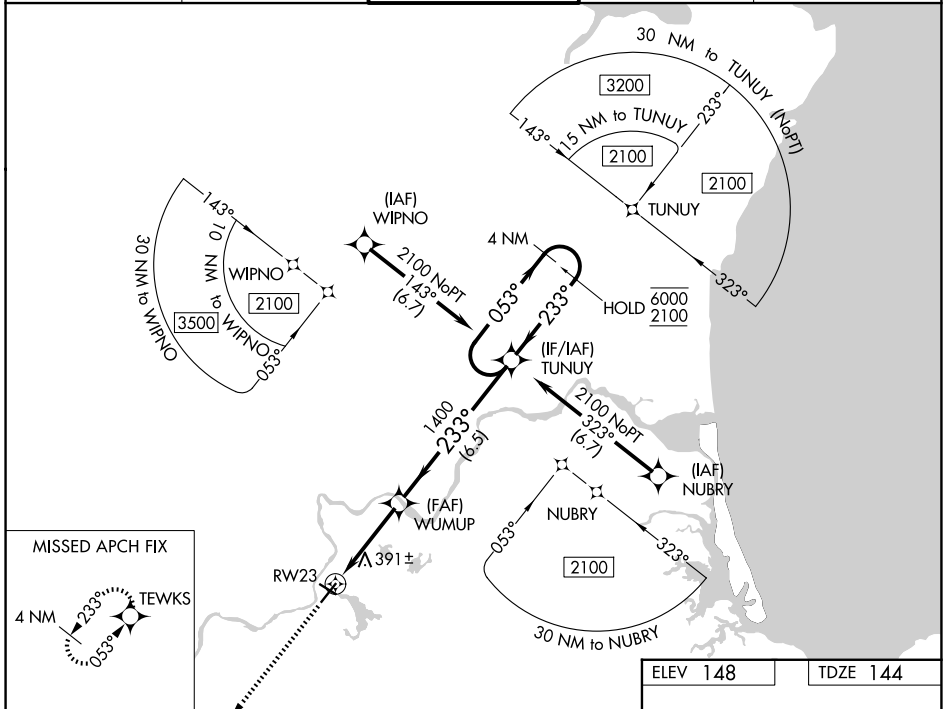
LAWRENCE MUNI (LWM)

RNP APCH - GPS

**⚠** Rwy 23 helicopter visibility reduction below 3/4 SM NA. Circling Rwy 32 NA at night.  
**⚠** For uncompensated Baro-VNAV systems, LNAV/VNAV NA below -16°C or above 54°C.

**MISSED APPROACH:** Climb to 2000 direct TEWKS and hold.

ATIS <b>126.75</b>	BOSTON APP CON <b>124.4 279.6</b>	LAWRENCE TOWER ★ <b>119.25 (CTAF) 0</b>	GND CON <b>124.3</b>	UNICOM <b>122.8</b>
-----------------------	--------------------------------------	--	-------------------------	------------------------



CATEGORY	A	B	C	D
LPV DA		562-1 1/8	418 (500-1 1/8)	
LNAV/VNAV DA		660-1 3/8	516 (600-1 3/8)	
LNAV MDA	660-1	516 (600-1)		660-1 3/8 516 (600-1 3/8)
CIRCLING	740-1	592 (600-1)		920-2 1/4 1220-3 772 (800-2 1/4) 1072 (1100-3)

HIRL Rwy 5-23 **1**  
 MIRL Rwy 14-32 **1**  
 REIL Rwy 5, 14, 23, and 32 **1**

NE-1, 14 MAY 2026 to 11 JUN 2026

NE-1, 14 MAY 2026 to 11 JUN 2026