

BNGLE FIVE DEPARTURE (RNAV)

AL-655 (FAA)

COVINGTON, KENTUCKY

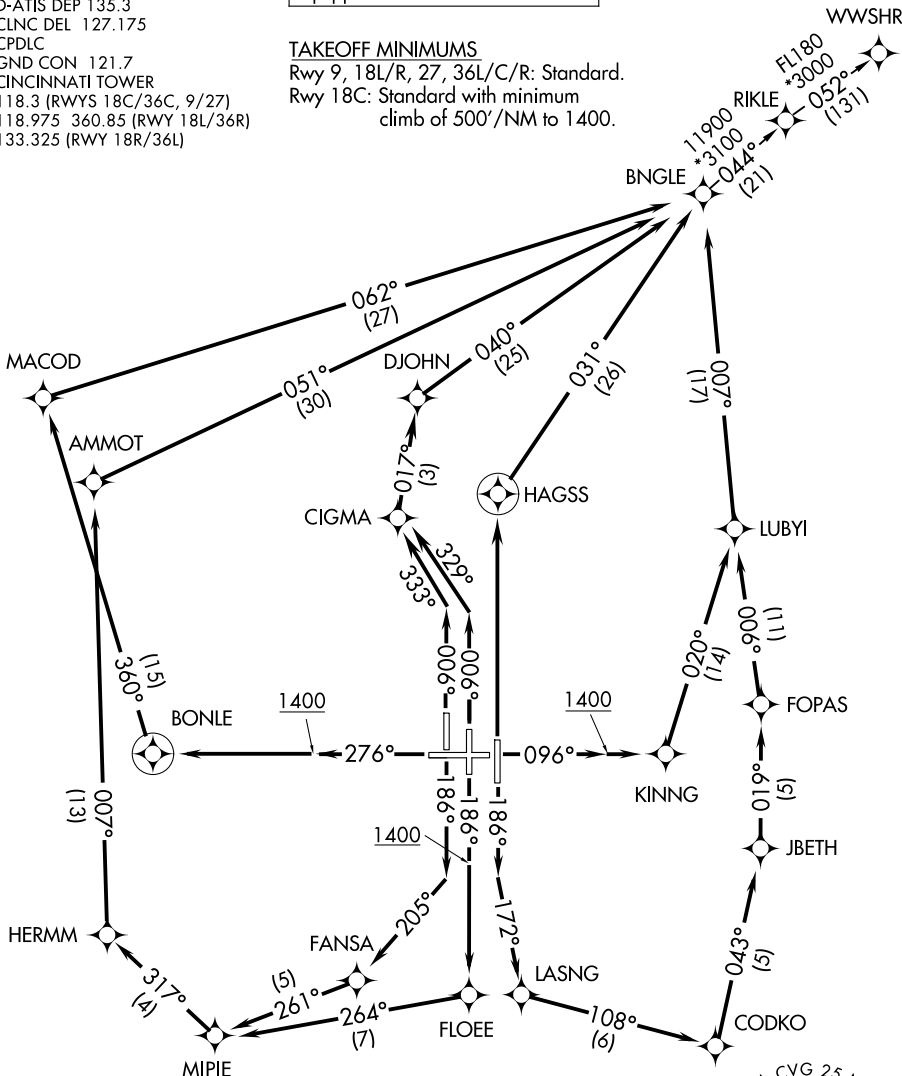
CINCINNATI DEP CON
 126.65 254.25 (001°-180°)
 128.7 254.25 (181°-360°)
 D-ATIS DEP 135.3
 CLNC DEL 127.175
 CPDLC
 GND CON 121.7
 CINCINNATI TOWER
 118.3 (RWYS 18C/36C, 9/27)
 118.975 360.85 (RWY 18L/36R)
 133.325 (RWY 18R/36L)

RNAV 1 - DME/DME/IRU or GPS.
 RADAR required for non-GPS
 equipped aircraft.

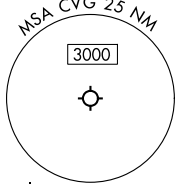
TOP ALTITUDE:
 (JETS) 5000/(PROPS) 4000

TAKEOFF MINIMUMS
 Rwy 9, 18L/R, 27, 36L/C/R: Standard.
 Rwy 18C: Standard with minimum
 climb of 500'/NM to 1400.

WWSHR



- NOTE: Increase speed to 250K until reaching/leaving 10000' feet.
If unable, advise ATC.
- NOTE: If unable to accept climb rates, advise ATC on initial contact.
- NOTE: Transponder code will be issued via PDC or Cincinnati CLNC DEL.



(CONTINUED ON FOLLOWING PAGE)

NOTE: Chart not to scale.

BNGLE FIVE DEPARTURE (RNAV)

COVINGTON, KENTUCKY

SE-1, 14 MAY 2026 to 11 JUN 2026

SE-1, 14 MAY 2026 to 11 JUN 2026



DEPARTURE ROUTE DESCRIPTION

TAKEOFF RUNWAY 9: Climb on heading 096° to 1400, then direct KINNG, then on track 020° to LUBYI, then on track 007° to BNGLE, thence. . . .

TAKEOFF RUNWAY 18L: Climb on heading 186° to intercept course 172° to LASNG, then on track 108° to CODKO, then on track 043° to JBETH, then on track 019° to FOPAS, then on track 006° to LUBYI, then on track 007° to BNGLE, thence. . . .

TAKEOFF RUNWAY 18C: Climb on heading 186° to 1400, then direct FLOEE, then on track 264° to MIPIE, then on track 317° to HERMM, then on track 007° to AMMOT, then on track 051° to BNGLE, thence. . . .

TAKEOFF RUNWAY 18R: Climb on heading 186° to intercept course 205° to FANSA, then on track 261° to MIPIE, then on track 317° to HERMM, then on track 007° to AMMOT, then on track 051° to BNGLE, thence. . . .

TAKEOFF RUNWAY 27: Climb on heading 276° to 1400, then direct BONLE, then on track 360° to MACOD, then on track 062° to BNGLE, thence. . . .

TAKEOFF RUNWAY 36L: Climb on heading 006° to intercept course 333° to CIGMA, then on track 017° to DJOHN, then on track 040° to BNGLE, thence. . . .

TAKEOFF RUNWAY 36C: Climb on heading 006° to intercept course 329° to CIGMA, then on track 017° to DJOHN, then on track 040° to BNGLE, thence. . . .

TAKEOFF RUNWAY 36R: Climb direct HAGSS, then on track 031° to BNGLE, thence. . . .

. . . turbojets: Maintain 5000, All other aircraft: Maintain 4000. Expect clearance to filed altitude within ten minutes after departure.

RIKLE TRANSITION (BNGLE5.RIKLE)

WWSHR TRANSITION (BNGLE5.WWSHR)

SE-1, 14 MAY 2026 to 11 JUN 2026

SE-1, 14 MAY 2026 to 11 JUN 2026