

CINCINNATI EIGHT DEPARTURE

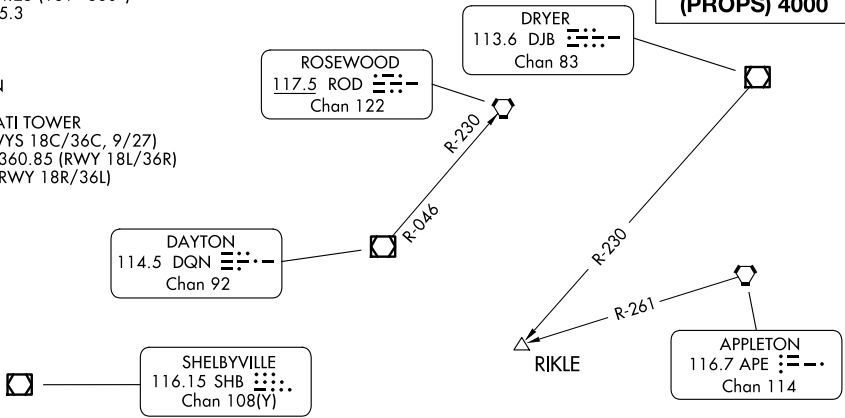
AL-655 (FAA)

COVINGTON, KENTUCKY

CINCINNATI DEP CON
 126.65 254.25 (001°-180°)
 128.7 254.25 (181°-360°)
 D-ATIS 135.3
 CLNC DEL
 127.175
 CPDLC
 GND CON
 121.7
 CINCINNATI TOWER
 118.3 (RWYS 18C/36C, 9/27)
 118.975 360.85 (RWY 18L/36R)
 133.325 (RWY 18R/36L)

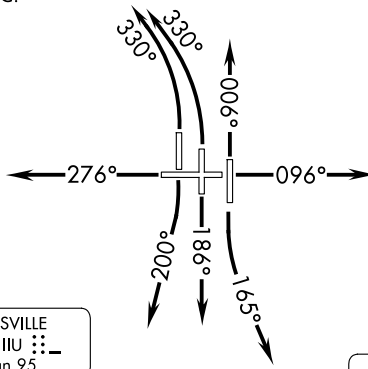
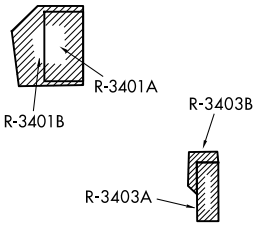
RADAR required.

**TOP ALTITUDE:
(JETS) 5000
(PROPS) 4000**



NOTE: SPECIAL INSTRUCTIONS: Appropriate departure frequency will be assigned by ATC.

NOTE: Jets accelerate to 250K until reaching 10000 MSL, if unable, advise ATC.



TAKEOFF MINIMUMS:
Rwys 9, 18L/C/R, 27, 36L/C/R: Standard.

LOUISVILLE
 114.8 IU (Chan 95)

LEXINGTON
 112.6 HYK (Chan 73)

NOTE: Chart not to scale.

DEPARTURE ROUTE DESCRIPTION

- TAKEOFF RUNWAY 9:** Climb on heading 096° or as assigned, thence. . . .
- TAKEOFF RUNWAY 18L:** Climbing left turn on heading 165°, thence. . . .
- TAKEOFF RUNWAY 18C:** Climb on heading 186° or as assigned, thence. . . .
- TAKEOFF RUNWAY 18R:** Climbing right turn on heading 200°, thence. . . .
- TAKEOFF RUNWAY 27:** Climb on heading 276° or as assigned, thence. . . .
- TAKEOFF RUNWAYS 36L/C:** Climbing left turn on heading 330°, thence. . . .
- TAKEOFF RUNWAY 36R:** Climb on heading 006° or as assigned, thence. . . .

. . . .for RADAR vectors to filed/assigned route. Jet aircraft maintain 5000, props maintain 4000. Expect clearance to requested altitude/flight level 10 minutes after departure.

SE-1, 14 MAY 2026 to 11 JUN 2026

SE-1, 14 MAY 2026 to 11 JUN 2026