

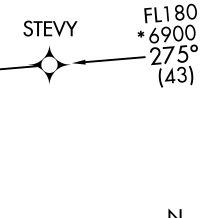
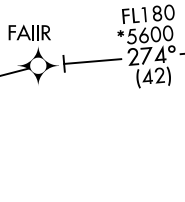
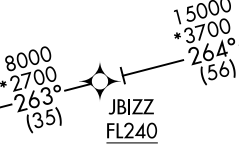
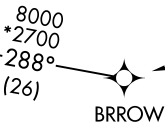
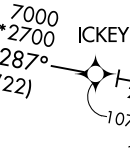
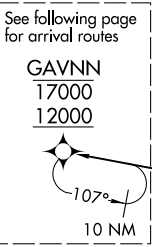
RNAV 1 - DME/DME/IRU or GPS.
RADAR required.

GAVNN EIGHT ARRIVAL (RNAV) Transition Routes
(GAVNN.GAVNN8) 22JAN26

(GAVNN.GAVNN8) 26022
GAVNN EIGHT ARRIVAL (RNAV) Transition Routes

AL-655 (FAA)

CINCINNATI APP CON
119.7 363.15 (090°-269°)
123.875 363.15 (270°-089°)
CVG D-ATIS
134.375
LUK ATIS
123.6



COLNS TRANSITION (COLNS.GAVNN8)
FAIR TRANSITION (FAIR.GAVNN8)

(CONTINUED ON FOLLOWING PAGE)

NOTE: Chart not to scale.

COVINGTON, KENTUCKY

COVINGTON, KENTUCKY

GAVNN EIGHT ARRIVAL (RNAV) Arrival Routes

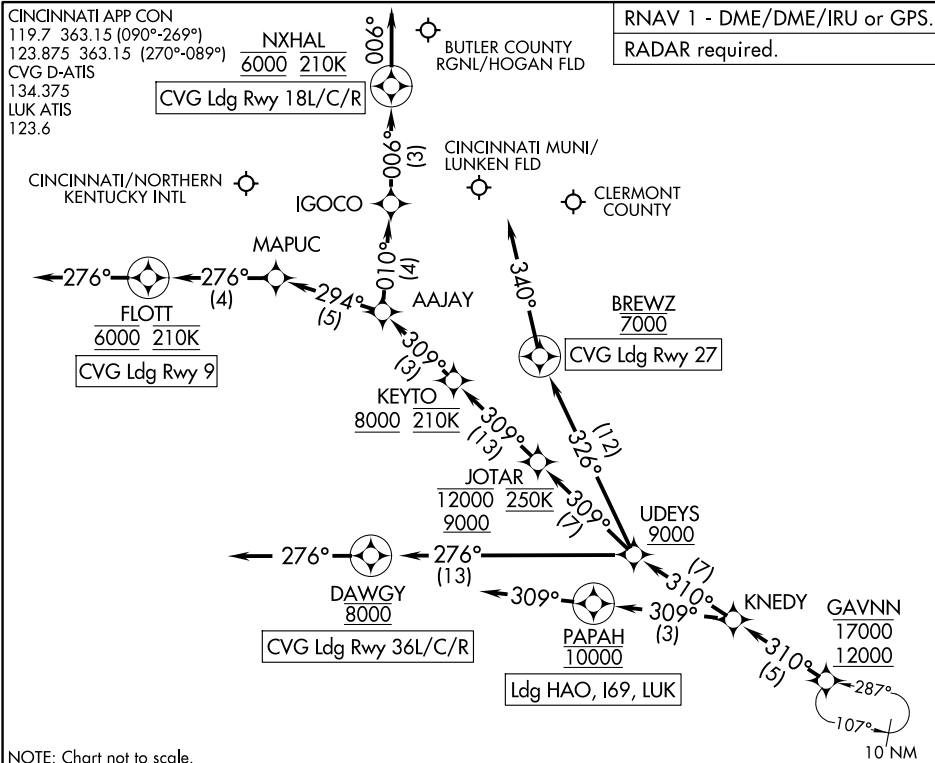
COVINGTON, KENTUCKY

CINCINNATI APP CON
 119.7 363.15 (090°-269°)
 123.875 363.15 (270°-089°)
 CVG D-ATIS
 134.375
 LUK ATIS
 123.6

$\frac{NXHAL}{6000 \quad 210K}$

CVG Ldg Rwy 18L/C/R

RNAV 1 - DME/DME/IRU or GPS.
 RADAR required.



NOTE: Chart not to scale.

ARRIVAL ROUTE DESCRIPTION

CVG: From GAVNN on track 310° to KNEDY, then on track 310° to cross UDEYS at or above 9000.

LANDING CVG RUNWAY 9: From UDEYS on track 309° to cross JOTAR between 9000 and 12000 and at 250K, then on track 309° to cross KEYTO at or above 8000 and at 210K, then on track 309° to AAJAY, then on track 294° to MAPUC, then on track 276° to cross FLOTT at 6000 and at 210K, then on track 276°. Expect RADAR vectors to final approach course for ILS, GPS, or RNP Rwy 9 approach.

LANDING CVG RUNWAYS 18L/C/R: From UDEYS on track 309° to cross JOTAR between 9000 and 12000 and at 250K, then on track 309° to cross KEYTO at or above 8000 and at 210K, then on track 309° to AAJAY, then on track 010° to IGOCO, then on track 006° to cross NXHAL at 6000 and at 210K, then on track 006°. Expect RADAR vectors to final approach course for ILS, GPS, or RNP Rwy 18L/C/R approach.

LANDING CVG RUNWAY 27: From UDEYS on track 326° to cross BREWZ at 7000, then on heading 340°. Expect RADAR vectors to final approach course for ILS, GPS, or RNP Rwy 27 approach.

LANDING CVG RUNWAYS 36L/C/R: From UDEYS on track 276° to cross DAWGY at 8000, then on track 276°. Expect RADAR vectors to final approach course for ILS, GPS, or RNP Rwy 36L/C/R approach.

LANDING I69/LUK/HAO: From GAVNN on track 310° to KNEDY, then on track 309° to cross PAPAHA at 10000, then on track 309°. Expect RADAR vectors to final approach course.

SE-1, 14 MAY 2026 to 11 JUN 2026

SE-1, 14 MAY 2026 to 11 JUN 2026