

LOC/DME I-CJN 110.75 Chan 44 (Y)	APP CRS 186°	Rwy Ldg TDZE Apt Elev 8000 868 896
--	------------------------	--

ILS RWY 18R (CAT II)

CINCINNATI/NORTHERN KENTUCKY INTL (CVG)

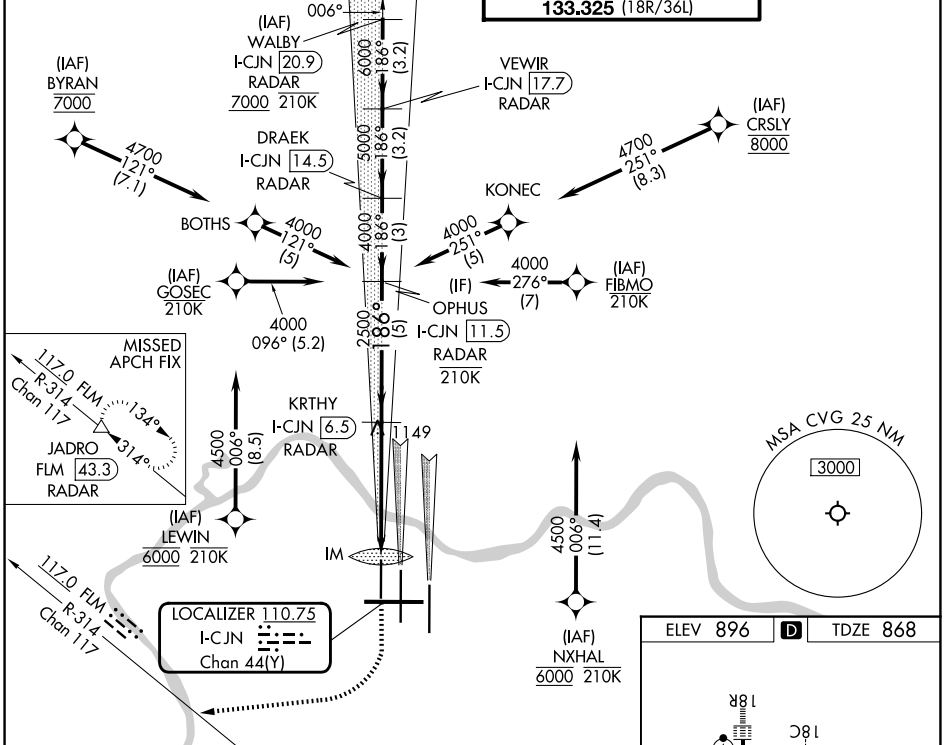
RNP APCH - GPS. From BYRAN, CRSLY, GOSEC, FIBMO, LEWIN and NXHAL.
DME or RADAR required. RADAR required for procedure entry at WALBY.



MISSED APPROACH: Climb to 1300 then climbing right turn to 4000 on heading 270° and FLM VOR/DME R-314 to JADRO/FLM 43.3 DME/RADAR and hold.

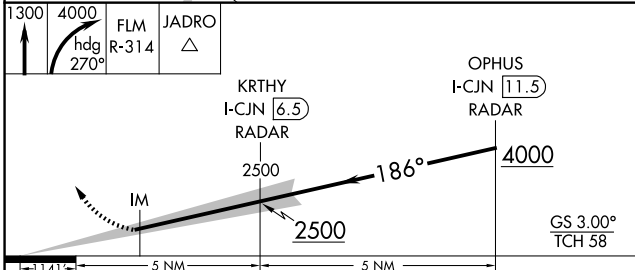
Simultaneous approach authorized with Rwy 18L/C.
Use of FD or AP required during simultaneous operations.

D-ATIS 134.375	CINCINNATI APP CON 119.7 363.15 (090°-269°) 123.875 363.15 (270°-089°)	CINCINNATI TOWER 118.975 360.85 (18L/36R) 118.3 (9/27, 18C/36C) 133.325 (18R/36L)	GND CON 121.7
--------------------------	--	---	-------------------------

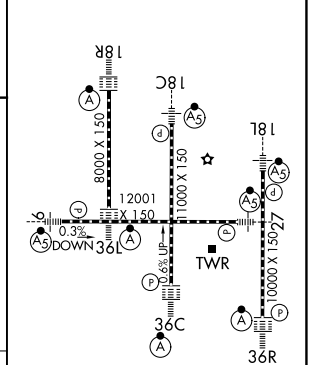


SE-1, 14 MAY 2026 to 11 JUN 2026

SE-1, 14 MAY 2026 to 11 JUN 2026



ELEV 896	D	TDZE 868
----------	----------	----------



CATEGORY	A	B	C	D
S-ILS 18R		RA 113/12	100	DA 968

CATEGORY II ILS - SPECIAL AIRCREW & AIRCRAFT CERTIFICATION REQUIRED

HIRL all rwys
TDZL/RCLS all rwys except 27