

LOC I-JDP 108.7	APP CRS 276°	Rwy Ldg 12000 TDZE 875 Apt Elev 896
---------------------------	------------------------	--

ILS RWY 27 (SA CAT I & II)

CINCINNATI/NORTHERN KENTUCKY INTL (CVG)

RNP APCH - GPS. From FIBSU, BREWZ, ZALED or YEYUP.

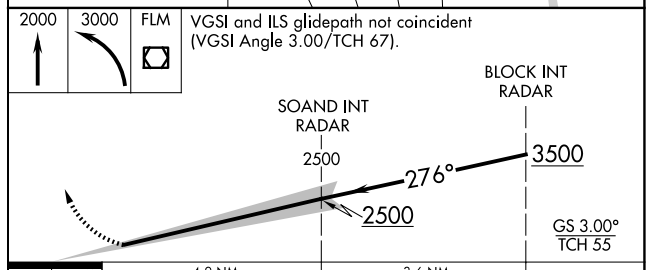
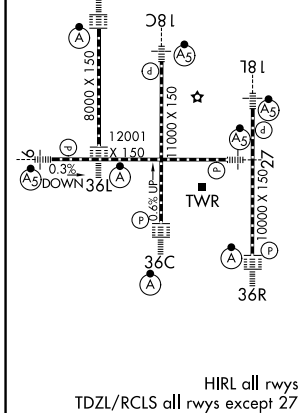
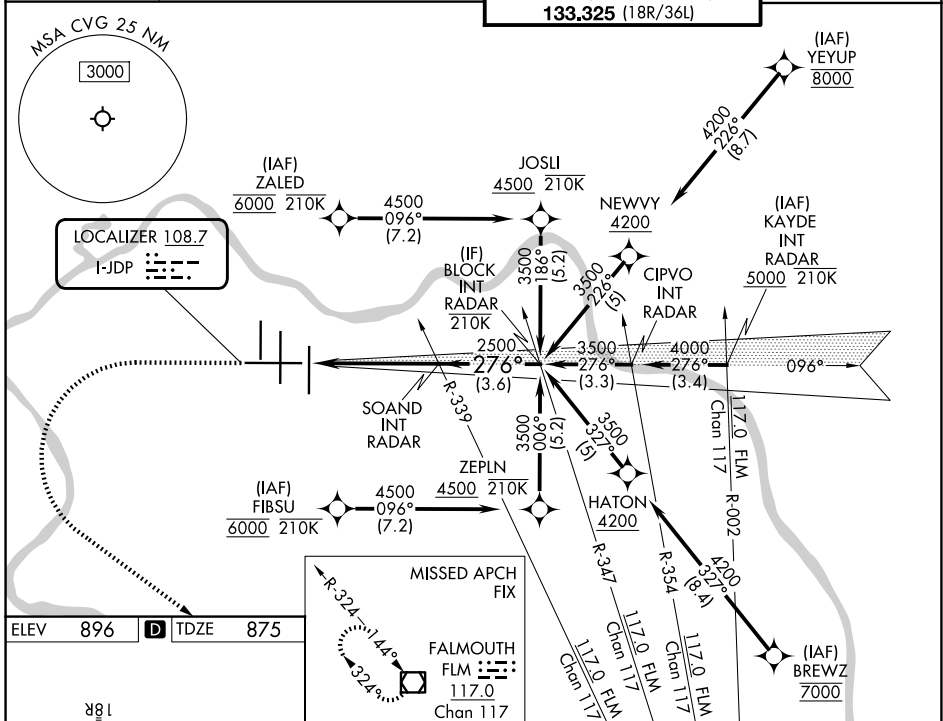
RADAR required for procedure entry at KAYDE.



MISSED APPROACH: Climb to 2000 then climbing left turn to 3000 direct FLM VOR/DME and hold.

Requires specific OPSPEC, MSPEC, or LOA approval.

D-ATIS 134.375	CINCINNATI APP CON 119.7 363.15 (090°-269°) 123.875 363.15 (270°-089°)	CINCINNATI TOWER 118.975 360.85 (18L/36R) 118.3 (9/27, 18C/36C) 133.325 (18R/36L)	GND CON 121.7
--------------------------	--	---	-------------------------



CATEGORY	A	B	C	D
S-ILS 27	SA CAT I	RA 136/14	150 DA 1025	
S-ILS 27	SA CAT II	RA 92/12	100 DA 975	

SA CATEGORY I & II ILS - SPECIAL AIRCREW & AIRCRAFT CERTIFICATION REQUIRED

SE-1, 14 MAY 2026 to 11 JUN 2026

SE-1, 14 MAY 2026 to 11 JUN 2026