

LOC/DME I-VAC <b>110.75</b> Chan <b>44</b> (Y)	APP CRS <b>006°</b>	Rwy Ldg TDZE <b>873</b> Apt Elev <b>896</b>
--	------------------------	---

# ILS RWY 36L (CAT II)

## CINCINNATI/NORTHERN KENTUCKY INTL (CVG)

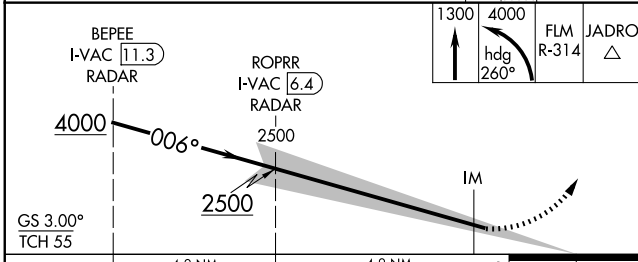
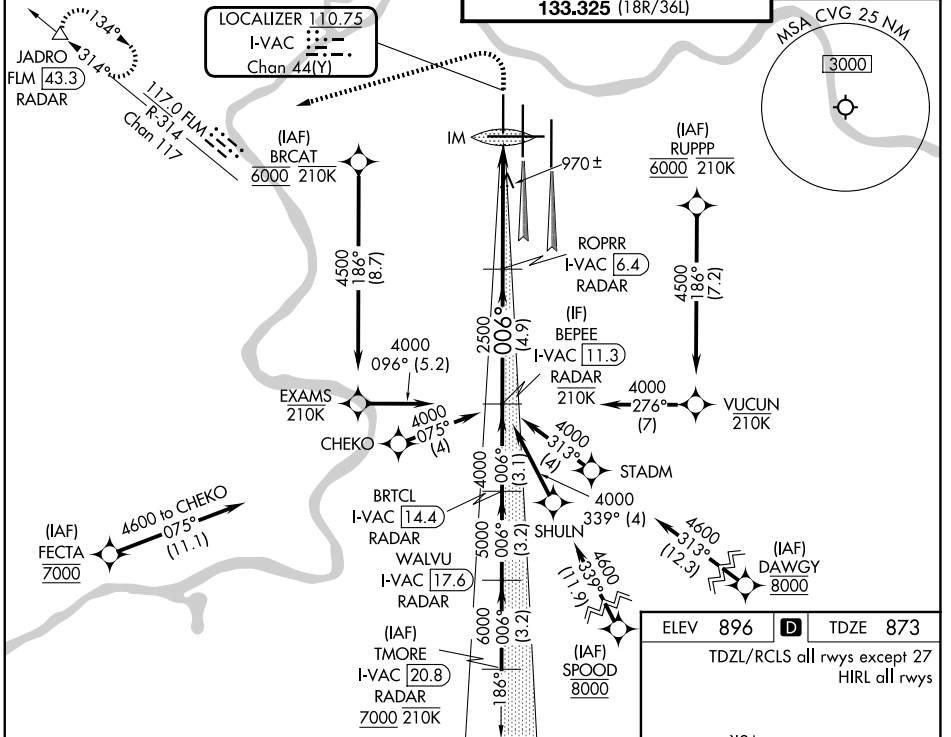
RNP APCH - GPS. From FECTA or SPOOD or DAWGY or RUPPP or BRCAT.  
DME or RADAR required. RADAR required for procedure entry at TMORE.

**Simultaneous approach authorized.**

ALSF-2

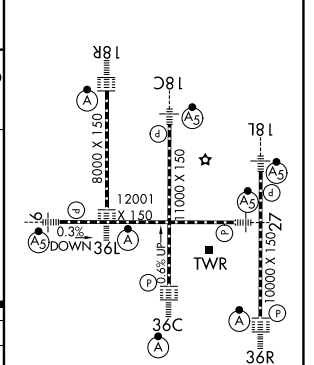
MISSED APPROACH: Climb to 1300 then climbing left turn to 4000 on heading 260° and on FLM VOR/DME R-314 to JADRO/FLM 43.3 DME/RADAR and hold.

D-ATIS <b>134.375</b>	CINCINNATI APP CON <b>119.7 363.15</b> (090°-269°) <b>123.875 363.15</b> (270°-089°)	CINCINNATI TOWER <b>118.975 360.85</b> (18L/36R) <b>118.3</b> (9/27, 18C/36C) <b>133.325</b> (18R/36L)	GND CON <b>121.7</b>
--------------------------	--	---	-------------------------



ELEV 896	TDZE 873
----------	----------

TDZL/RCLS all rwys except 27  
HIRL all rwys



CATEGORY	A	B	C	D
S-ILS 36L	RA 100/12 100 DA 973			

### CATEGORY II ILS - SPECIAL AIRCREW & AIRCRAFT CERTIFICATION REQUIRED

# ILS RWY 36L (CAT II)

SE-1, 14 MAY 2026 to 11 JUN 2026

SE-1, 14 MAY 2026 to 11 JUN 2026