


| | | |
|---------------------------|------------------------|--|
| LOC I-JDP 108.7 | APP CRS 276° | Rwy Ldg 12000 TDZE 875 Apt Elev 896 |
|---------------------------|------------------------|--|

ILS or LOC RWY 27

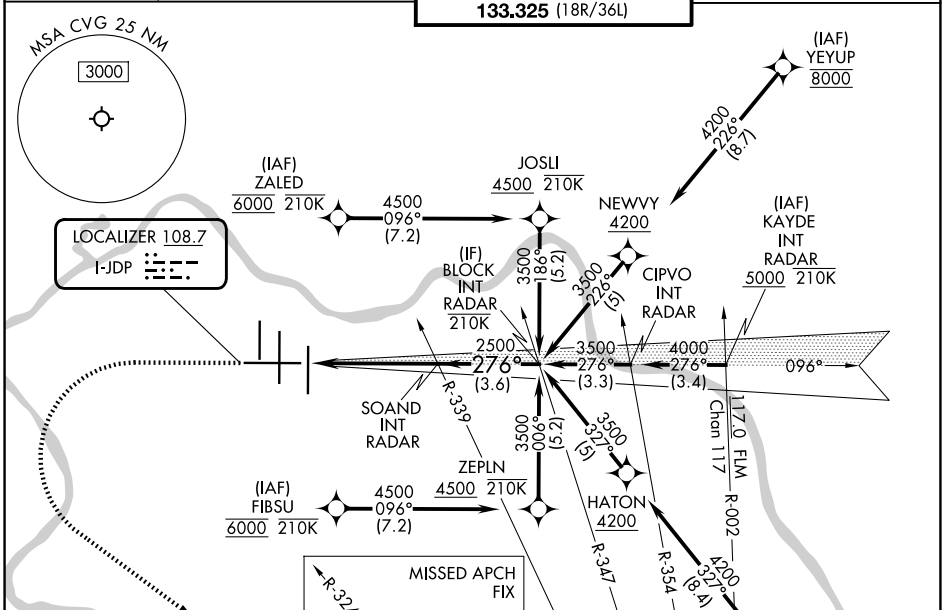
CINCINNATI/NORTHERN KENTUCKY INTL (CVG)

RNP APCH - GPS. From FIBSU, BREWZ, ZALED or YEYUP.
 RADAR required for procedure entry at KAYDE.
 ▼ For inop ALS, increase S-LOC 27 Cat C/D visibility to 1 $\frac{3}{8}$ SM.
 *RVR 1800 authorized with use of FD or AP or HUD to DA.

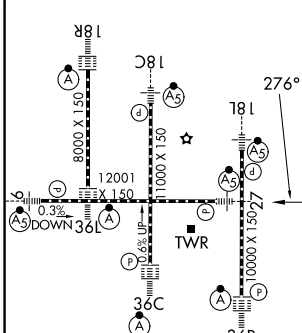
MALS 

MISSED APPROACH: Climb to 2000 then climbing left turn to 3000 direct FLM VOR/DME and hold.


| | | | |
|--------------------------|--|---|-------------------------|
| D-ATIS 134.375 | CINCINNATI APP CON 119.7 363.15 (090°-269°) 123.875 363.15 (270°-089°) | CINCINNATI TOWER 118.975 360.85 (18L/36R) 118.3 (9/27, 18C/36C) 133.325 (18R/36L) | GND CON 121.7 |
|--------------------------|--|---|-------------------------|



| | | |
|----------|----------|----------|
| ELEV 896 | D | TDZE 875 |
|----------|----------|----------|

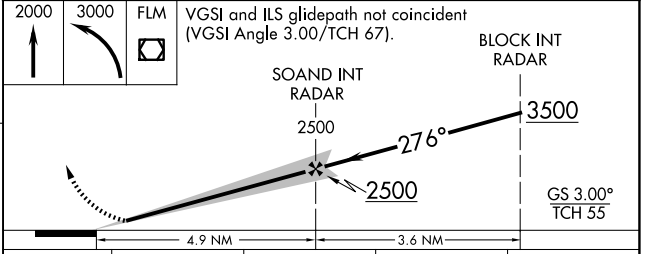


MISSED APCH FIX

FALMOUTH FLM  117.0 Chan 117

2000 3000 FLM 

VGSI and ILS glidepath not coincident (VGSI Angle 3.00/TCH 67°).



| CATEGORY | A | B | C | D |
|-----------|-----------------------------------|---------------------------|--|-----------------------|
| S-ILS 27* | 1075/24 200 (200- $\frac{1}{2}$) | | | |
| S-LOC 27 | 1340/24 | 465 (500- $\frac{1}{2}$) | 1340/50 | 465 (500-1) |
| CIRCLING | 1460-1 | 564 (600-1) | 1560-1 $\frac{3}{4}$ 664 (700-1 $\frac{3}{4}$) | 1560-2 664 (700-2) |

SE-1, 14 MAY 2026 to 11 JUN 2026

SE-1, 14 MAY 2026 to 11 JUN 2026