

LOC/DME I-CVG 109.9 Chan 36	APP CRS 006°	Rwy Ldg 11000 TDZE 850 Apt Elev 896
---	------------------------	--

ILS or LOC RWY 36C

CINCINNATI/NORTHERN KENTUCKY INTL (CVG)

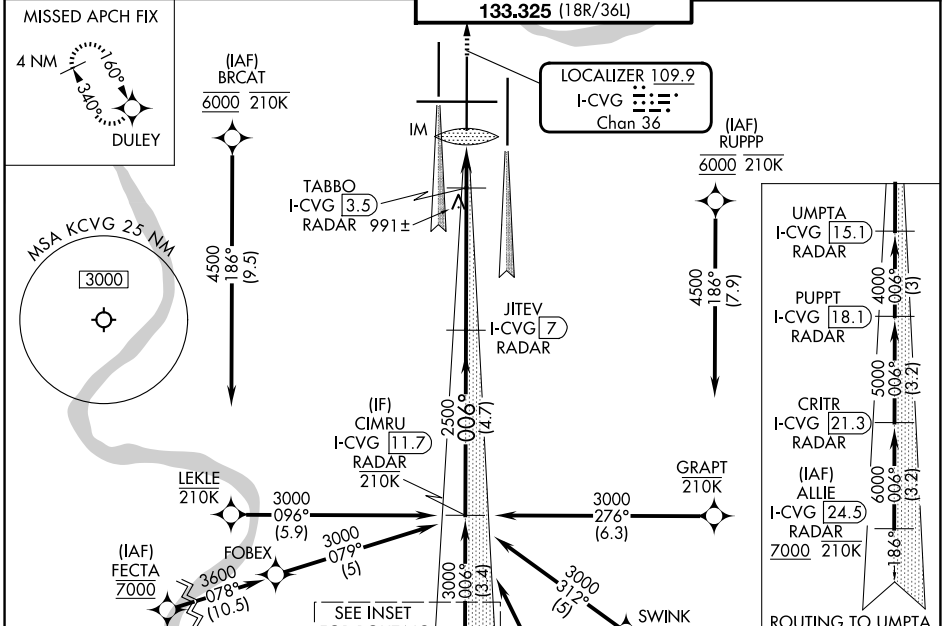
RNP APCH - GPS.

ALSF-2

▼ For inop ALS, increase S-LOC 36C Cats C and D visibility to RVR 6000.
Simultaneous approach authorized.

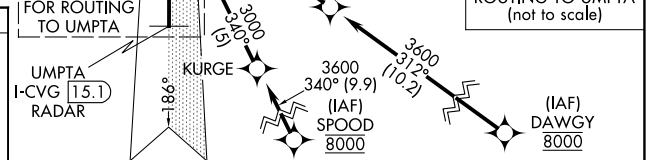
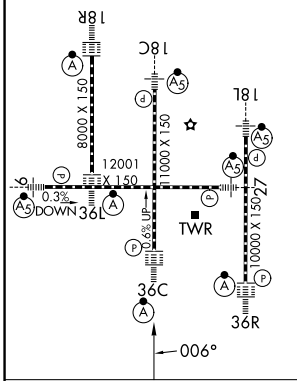
MISSED APPROACH: Climb to 4000
direct DULEY and hold, continue
climb-in-hold to 4000.

D-ATIS 134.375	CINCINNATI APP CON 119.7 363.15 (090°-269°) 123.875 363.15 (270°-089°)	CINCINNATI TOWER 118.975 360.85 (18L/36R) 118.3 (9/27, 18C/36C) 133.325 (18R/36L)	GND CON 121.7
--------------------------	--	---	-------------------------



ELEV 896	D	TDZE 850
----------	----------	----------

TDZL/RCLS all rws except 27
HIRL all rws



4000	DULEY	VGSi and ILS glidepath not coincident (VGSi Angle 3.00/TCH 77).	JITEV I-CVG [7] RADAR	CIMRU I-CVG [11.7] RADAR
------	-------	---	-----------------------	--------------------------

FAF to MAP 5.1 NM								
Knots	60	90	120	150	180			
Min:Sec	5:06	3:24	2:33	2:02	1:42			
CATEGORY	A		B		C		D	
S-ILS 36C	1050/18				200 (200-½)			
S-LOC 36C	1260/24		410 (400-½)		1260/40		410 (400-¾)	
CIRCLING	1460-1		564 (600-1)		1560-1¾		1560-2	
					664 (700-1¾)		664 (700-2)	

SE-1, 14 MAY 2026 to 11 JUN 2026

SE-1, 14 MAY 2026 to 11 JUN 2026